



1124	POLES, HARDWARE, AND FRAMING 3PH SELF-SUPPORTING FRAMING	
Sheet 1 of 1		
Rev: 08/01/20		

# 1124

## 3 PHASE SELF-SUPPORTING FRAMING

### CONTAINS

- 1124-00 WIRE TENSION TABLE & NOTES**
- 1124-01 795 CONSTRUCTION OVERLOAD**
- 1124-02 4/0 CONSTRUCTION OVERLOAD**
- 1124-03 1/0 CONSTRUCTION OVERLOAD**
- 1124-04A 3PH DE SELF-SUPPORTING POLES**
- 1124-04B 1PH DE SELF-SUPPORTING POLES**
- 1124-05 3PH - SS SGL & DBL PIN**
- 1124-22 3PH - SS SGL DE FLAT**
- 1124-30 3PH - SS DBL DE FLAT**
- 1124-32 3PH - SS SGL DE JUNCTION FLAT**
- 1124-42 3PH - SS SGL DE FLAT CORNER**

<b>1124-00</b>	<b>POLES, HARDWARE, AND FRAMING 3PH SELF-SUPPORTING FRAMING</b>	
Sheet 1 of 1		
Rev: 08/01/20		

**1124-00 WIRE TENSION TABLE & NOTES**

**Notes:**

These charts and models refer to Steel Poles.

If there is a difference in elevation between poles that are greater than 5', it must be modeled by an engineer,

If there is a junction pole or pole with multiple circuits, it must be modeled by an engineer.

All calculations based on NESC medium loading area.

NESC Grade C construction areas include all electrical distribution lines except for highways and railroad crossings.

NESC Grade B construction areas include only highways and railroad crossings.

Consult with design lead to determine if 1/0 or 4/0 lines would be candidate for upgrade in the short- to- mid-term future.

Pole calculations done with consideration of two tangent medium to heavy communications.

Dead-end pole calculations done with consideration of dead-end medium sized communications. Any more than 2 will require to be modeled by an engineer.

Angle-pole and Dead-end pole calculations were performed with static full tension values in below table. Unless calculation states that it is "reduced tension" (50%) or slack (15%) of full tension values.

The pole analysis calculations are done to a maximum pole capacity utilization of 80%.

Dead-end poles shall have a full tension max span of 300 ft, spans greater than this will need to be modeled by an engineer.

Dead-end poles that have a "reduced" span of greater than 150 ft or "slack" span greater than 75 ft will need to be modeled by an engineer.

Static Full Tension Table (lbs)		
AAC 795 KCM	<i>Arbutus</i>	4750
ACSR 336 KCM	<i>26/7 Linnet</i>	4230
AAC 4/0	<i>Oxlip</i>	1500
ACSR 1/0	<i>Raven</i>	1500



**1124-01 795 CONSTRUCTION OVERLOAD**

These charts and models refer to Steel Poles.

795 KCMIL AAC Arbutus Primary with 4/0 AAC Oxlip Neutral						
Ruling Span	<100 Feet		100-200 Feet		200-300 Feet	
Pole Length (ft.)	Grade C Limit (line angle degrees)	Grade B Limit (line angle degrees)	Grade C Limit (line angle degrees)	Grade B Limit (line angle degrees)	Grade C Limit (line angle degrees)	Grade B Limit (line angle degrees)
<i>(LD-2 Series)</i>						
45	0°-7°	0°-4°	0°-6°	0°-4°	0°-5°	0°-3°
50	0°-7°	0°-4°	0°-6°	0°-4°	0°-5°	0°-3°
55	0°-7°	0°-4°	0°-6°	0°-4°	0°-5°	0°-3°
60	0°-7°	0°-4°	0°-6°	0°-4°	0°-5°	0°-3°
65	0°-6°	0°-4°	0°-5°	0°-4°	0°-4°	0°-3°
<i>(LD-4 Series)</i>						
45	8°-10°	5°-6°	7°-9°	5°	6°-8°	4°
50	8°-10°	5°-6°	7°-9°	5°	6°-8°	4°
55	8°-10°	5°-6°	7°-9°	5°	6°-8°	4°
60	8°-10°	5°-6°	7°-9°	5°	6°-8°	4°
65	7°-9°	5°-6°	6°-8°	5°	5°-7°	4°
<i>(LD-6 Series)</i>						
45	11°-14°	7°-9°	10°-13°	6°-8°	9°-12°	5°-7°
50	11°-14°	7°-9°	10°-13°	6°-8°	9°-12°	5°-7°
55	11°-14°	7°-9°	10°-13°	6°-8°	9°-12°	5°-7°
60	11°-13°	7°-8°	10°-12°	6°-7°	9°-11°	5°-6°
65	10°-13°	7°-8°	9°-12°	6°-7°	8°-11°	5°-6°
<i>(LD-8 Series)</i>						
45	15°-20°	10°-13°	14°-19°	9°-12°	13°-18°	8°-11°
50	15°-19°	10°-12°	14°-18°	9°-11°	13°-17°	8°-10°
55	15°-18°	10°-12°	14°-17°	9°-11°	13°-16°	8°-10°
60	14°-17°	9°-11°	13°-16°	8°-10°	12°-15°	7°-9°
65	14°-17°	9°-11°	13°-16°	8°-10°	12°-15°	7°-9°
<i>(LD-10 Series)</i>						
45	21°-25°	14°-16°	20°-24°	13°-15°	19°-23°	12°-14°
50	20°-24°	13-16°	19°-23°	12°-15°	18°-22°	11°-14°
55	19°-23°	13°-15°	18°-22°	12°-14°	17°-21°	11°-13°
60	18°-22°	12°-14°	17°-21°	11°-13°	16°-20°	10°-12°
65	18°-21°	12°-14°	17°-20°	11°-13°	16°-19°	10°-12°

POLES, HARDWARE, AND FRAMING  
 3PH SELF-SUPPORTING FRAMING  
 795 CONSTRUCTION OVERLOAD



These charts and models refer to Steel Poles.

795 KCMIL AAC Arbutus Primary with 1/0 ACSR Raven Neutral						
Ruling Span	<100 Feet		100-200 Feet		200-300 Feet	
Pole Length (ft.)	Grade C Limit (line angle degrees)	Grade B Limit (line angle degrees)	Grade C Limit (line angle degrees)	Grade B Limit (line angle degrees)	Grade C Limit (line angle degrees)	Grade B Limit (line angle degrees)
<i>(LD-2 Series)</i>						
45	0°-7°	0°-5°	0°-6°	0°-5°	0°-6°	0°-4°
50	0°-7°	0°-5°	0°-6°	0°-5°	0°-6°	0°-4°
55	0°-7°	0°-5°	0°-6°	0°-5°	0°-6°	0°-4°
60	0°-6°	0°-5°	0°-6°	0°-5°	0°-5°	0°-4°
65	0°-6°	0°-5°	0°-6°	0°-5°	0°-5°	0°-4°
<i>(LD-4 Series)</i>						
45	8°-10°	6°	7°-10°	6°	7°-9°	5°
50	8°-10°	6°	7°-10°	6°	7°-9°	5°
55	8°-10°	6°	7°-10°	5°	7°-9°	5°
60	7°-10°	6°	7°-9°	5°	6°-9°	5°
65	7°-9°	6°	7°-9°	5°	6°-8°	5°
<i>(LD-6 Series)</i>						
45	11°-15°	7°-9°	11°-14°	7°-9°	10°-14°	6°-8°
50	11°-14°	7°-9°	11°-14°	7°-8°	10°-13°	6°-8°
55	11°-14°	7°-9°	11°-14°	6°-8°	9°-13°	6°-8°
60	11°-13°	7°-8°	10°-13°	6°-8°	10°-12°	6°-7°
65	10°-13°	7°-8°	10°-12°	6°-7°	9°-12°	6°-7°
<i>(LD-8 Series)</i>						
45	16°-21°	10°-13°	15°-20°	10°-13°	15°-20°	9°-12°
50	15°-20°	10°-12°	15°-19°	9°-12°	14°-19°	9°-12°
55	15°-19°	10°-12°	15°-19°	9°-11°	14°-18°	9°-11°
60	14°-18°	9°-11°	14°-17°	9°-11°	13°-17°	8°-10°
65	14°-17°	9°-11°	13°-17°	8°-10°	13°-16°	8°-10°
<i>(LD-10 Series)</i>						
45	22°-27°	14°-17°	21°-26°	14°-16°	21°-26°	13°-16°
50	21°-25°	13°-16°	20°-25°	13°-16°	20°-24°	13°-15°
55	20°-24°	13°-15°	20°-24°	12°-15°	19°-23°	12°-14°
60	19°-23°	12°-15°	18°-23°	12°-14°	18°-22°	11°-14°
65	18°-21°	12°-14°	18°-22°	11°-13°	17°-21°	11°-13°

POLES, HARDWARE, AND FRAMING  
 3PH SELF-SUPPORTING FRAMING  
 4/0 CONSTRUCTION OVERLOAD



These charts and models refer to Steel Poles.


4/0 AAC Oxlip Primary with 4/0 AAC Oxlip Neutral						
Ruling Span	<100 Feet		100-200 Feet		200-300 Feet	
Pole Length (ft.)	Grade C Limit (line angle degrees)	Grade B Limit (line angle degrees)	Grade C Limit (line angle degrees)	Grade B Limit (line angle degrees)	Grade C Limit (line angle degrees)	Grade B Limit (line angle degrees)
<i>(LD-2 Series)</i>						
45	0°-20°	0°-12°	0°-18°	0°-10°	0°-16°	0°-8°
50	0°-20°	0°-12°	0°-18°	0°-10°	0°-16°	0°-8°
55	0°-20°	0°-12°	0°-18°	0°-10°	0°-15°	0°-8°
<i>(LD-4 Series)</i>						
45	21°-30°	13°-18°	19°-27°	11°-16°	17°-25°	9°-14°
50	21°-29°	13°-18°	19°-27°	11°-16°	17°-25°	9°-14°
55	21°-29°	13°-18°	19°-27°	11°-16°	16°-25°	9°-14°
<i>(LD-6 Series)</i>						
45	31°-41°	19°-26°	28°-39°	17°-24°	26°-37°	15°-22°
50	30°-40°	19°-25°	28°-38°	17°-23°	26°-36°	15°-21°
55	30°-39°	19°-25°	28°-37°	17°-23°	26°-35°	15°-21°
<i>(LD-8 Series)</i>						
45	42°-58°	27°-37°	40°-56°	25°-35°	38°-54°	23°-33°
50	41°-56°	26°-35°	39°-54°	24°-33°	37°-52°	22°-31°
55	40°-53°	26°-33°	38°-51°	24°-31°	36°-49°	22°-29°
<i>(LD-10 Series)</i>						
45	59°-76°	38°-47°	57°-74°	36°-45°	55°-72°	34°-43°
50	57°-72°	36°-45°	55°-70°	34°-43°	53°-68°	32°-41°
55	54°-69°	34°-43°	52°-67°	32°-41°	50°-65°	30°-39°

POLES, HARDWARE, AND FRAMING  
 3PH SELF-SUPPORTING FRAMING  
 1/0 CONSTRUCTION OVERLOAD



These charts and models refer to Steel Poles.

1/0 ACSR Raven Primary with 1/0 ACSR Raven Neutral						
Ruling Span	<100 Feet		100-200 Feet		200-300 Feet	
Pole Length (ft.)	Grade C Limit (line angle degrees)	Grade B Limit (line angle degrees)	Grade C Limit (line angle degrees)	Grade B Limit (line angle degrees)	Grade C Limit (line angle degrees)	Grade B Limit (line angle degrees)
<i>(LD-2 Series)</i>						
45	0°-20°	0°-12°	0°-18°	0°-11°	0°-16°	0°-9°
50	0°-20°	0°-12°	0°-18°	0°-10°	0°-16°	0°-9°
55	0°-20°	0°-12°	0°-18°	0°-10°	0°-16°	0°-8°
<i>(LD-4 Series)</i>						
45	21°-30°	13°-19°	19°-28°	12°-17°	17°-26°	10°-15°
50	21°-29°	13°-18°	19°-28°	11°-17°	17°-26°	10°-15°
55	21°-29°	13°-18°	19°-27°	11°-16°	17°-25°	9°-15°
<i>(LD-6 Series)</i>						
45	31°-41°	20°-26°	29°-40°	18°-25°	27°-38°	16°-23°
50	30°-41°	19°-26°	29°-39°	18°-24°	27°-37°	16°-22°
55	30°-40°	19°-25°	28°-38°	17°-23°	26°-36°	16°-22°
<i>(LD-8 Series)</i>						
45	42°-58°	27°-37°	41°-57°	26°-35°	39°-55°	24°-34°
50	42°-56°	27°-35°	40°-54°	25°-34°	38°-52°	23°-32°
55	41°-53°	26°-34°	39°-52°	24°-32°	37°-50°	23°-29°
<i>(LD-10 Series)</i>						
45	59°-76°	38°-47°	58°-75°	36°-46°	56°-73°	35°-47°
50	57°-72°	36°-45°	55°-71°	35°-44°	53°-69°	33°-42°
55	54°-69°	35°-43°	53°-67°	33°-42°	51°-66°	30°-40°

<b>1124-04</b>	<b>POLES, HARDWARE, AND FRAMING</b> <b>3PH SELF-SUPPORTING FRAMING</b> <b>3PH DE SELF-SUPPORTING POLES</b>	
Sheet 1 of 1		
Rev: 08/01/20		


These charts and models refer to Steel Poles.

<i>Conductor &amp; Neutral</i>	3PH 795 KCMIL AAC Arbutus Primary with 4/0 AAC Oxlip Neutral		3PH 795 KCMIL AAC Arbutus Primary with 1/0 Raven Neutral	
<b>NESC Grade Scenario</b>	<b>Grade C Limit - Max Dist</b>	<b>Grade B Limit - Max Dist</b>	<b>Grade C Limit - Max Dist</b>	<b>Grade B Limit - Max Dist</b>
Full Tension (100%)	LD-MOD	LD-MOD	LD-MOD	LD-MOD
Reduced Tension (50%)	LD-MOD	LD-MOD	LD-10	LD-MOD
Slack (10%)	LD-6	LD-8	LD-6	LD-8

<i>Conductor &amp; Neutral</i>	3PH 336 ACSR Linnet with 4/0 AAC Oxlip Neutral		3PH 795 KCMIL AAC Arbutus Primary with 1/0 Raven Neutral	
<b>NESC Grade Scenario</b>	<b>Grade C Limit - Max Dist</b>	<b>Grade B Limit - Max Dist</b>	<b>Grade C Limit - Max Dist</b>	<b>Grade B Limit - Max Dist</b>
Full Tension (100%)	LD-MOD	LD-MOD	LD-MOD	LD-MOD
Reduced Tension (50%)	LD-10	LD-MOD	LD-10	LD-MOD
Slack (10%)	LD-6	LD-8	LD-6	LD-6

<i>Conductor &amp; Neutral</i>	3PH 4/0 AAC Oxlip Primary with 4/0 AAC Oxlip Neutral		3PH 4/0 AAC Primary with 1/0 Raven Neutral	
<b>NESC Grade Scenario</b>	<b>Grade C Limit - Max Dist</b>	<b>Grade B Limit - Max Dist</b>	<b>Grade C Limit - Max Dist</b>	<b>Grade B Limit - Max Dist</b>
Full Tension (100%)	LD-MOD	LD-MOD	LD-MOD	LD-MOD
Reduced Tension (50%)	LD-10	LD-10	LD-10	LD-10
Slack (10%)	LD-6	LD-6	LD-4	LD-4

<i>Conductor &amp; Neutral</i>	3PH 1/0 Raven Primary with 1/0 Raven Neutral	
<b>NESC Grade Scenario</b>	<b>Grade C Limit - Max Dist</b>	<b>Grade B Limit - Max Dist</b>
Full Tension (100%)	LD-MOD	LD-MOD
Reduced Tension (50%)	LD-10	LD-10
Slack (10%)	LD-6	LD-6

<b>1124-04B</b>	<b>POLES, HARDWARE, AND FRAMING</b> <b>3PH SELF-SUPPORTING FRAMING</b> <b>1PH DE SELF-SUPPORTING POLES</b>	
Sheet 1 of 1		
Rev: 08/01/20		

These charts and models refer to Steel Poles.

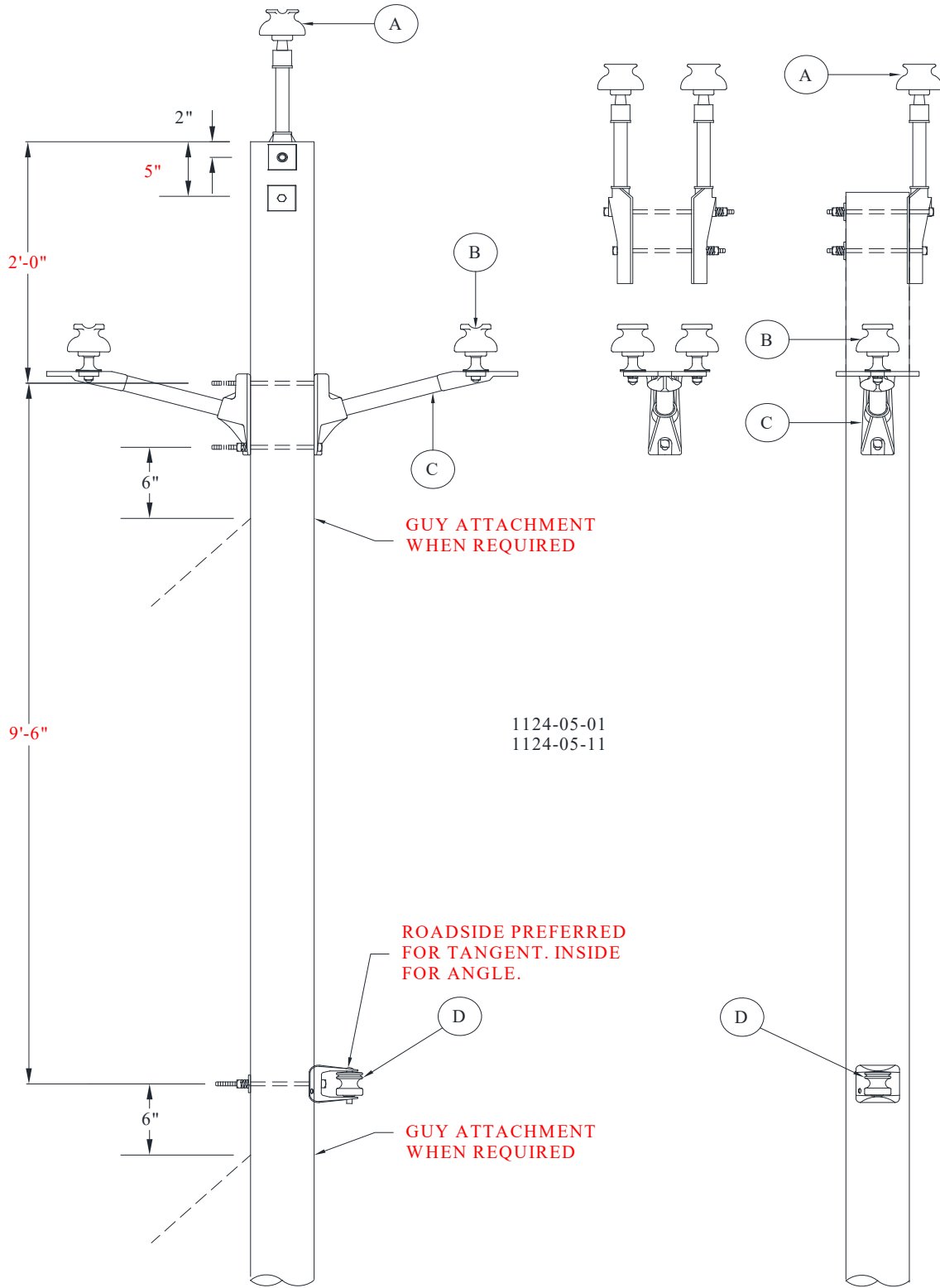
<i>Conductor &amp; Neutral</i>	1PH 4/0 AAC Oxlip Primary with 4/0 AAC Oxlip Neutral		1PH 4/0 AAC Primary with 1/0 Raven Neutral	
<b>NESC Grade Scenario</b>	<b>Grade C Limit - Max Dist</b>	<b>Grade B Limit - Max Dist</b>	<b>Grade C Limit - Max Dist</b>	<b>Grade B Limit - Max Dist</b>
Full Tension (100%)	LD-6	LD-8	LD-4	LD-8
Reduced Tension (50%)	LD-2	LD-6	LD-2	LD-4


<i>Conductor &amp; Neutral</i>	1PH 1/0 Raven Primary with 1/0 Raven Neutral	
<b>NESC Grade Scenario</b>	<b>Grade C Limit - Max Dist</b>	<b>Grade B Limit - Max Dist</b>
Full Tension (100%)	LD-4	LD-6
Reduced Tension (50%)	LD-2	LD-4



<b>1124-05</b>
Sheet 1 of 4
Rev: 08/01/20

**POLES, HARDWARE, AND FRAMING  
3PH SELF-SUPPORTING FRAMING  
3PH SELF SUPPORTING SGL AND DBL PIN**



<b>1124-05</b>	<b>POLES, HARDWARE, AND FRAMING 3PH SELF-SUPPORTING FRAMING 3PH SELF SUPPORTING SGL AND DBL PIN</b>	
Sheet 2 of 4		
Rev: 08/01/20		

**MU**

**REFERENCE FOR SPAN LENGTH/ANGLE PARAMETERS**

MU-REF	WIRE	PARAMETERS
1124-05-01	1/0	SPAN LENGTH < 300 FT
	4/0	SPAN LENGTH < 250 FT
	795	SPAN LENGTH < 250 FT
1124-05-11	1/0	SPAN LENGTH > 300 FT
	4/0	SPAN LENGTH > 250 FT
	795	SPAN LENGTH > 250 FT
1124-05-01	1/0	ANGLE POLE < 30 DEGREES WITH SPAN LENGTH < 300 FT.
	4/0	ANGLE POLE < 09 DEGREES WITH SPAN LENGTH < 250 FT.
	795	ANGLE POLE < 09 DEGREES WITH SPAN LENGTH < 250 FT.
1124-05-11	1/0	ANGLE POLE < 30 DEGREES WITH SPAN LENGTH > 300 FT.
	4/0	ANGLE POLE > 09 AND < 18 DEGREES WITH SPAN LENGTH < 250 FT.
	795	ANGLE POLE > 09 AND < 18 DEGREES WITH SPAN LENGTH < 250 FT.

**MU-ID**

**MU-REF**

**MU-DESCRIPTION**

3PHSSSGLPNSGLNU

11240501

3PH SS WITH SGL PIN SGL NEUT

ID	CU-REF	CU-DESC	QTY	MU-REF
A	11200701	INSULATOR W/ FIBERGLASS POLE TOP PIN-SGL	1	11240501
B	11200801	INSULATOR W/SHORT SHANK PIN	2	11240501
C	11201102	BRKT 3 EAR FG 18 IN-DBL	1	11240501
D	11201003	BRKT RACK 1 POINT 14 IN-SGL	1	11240501

3PHSSDBLPNSGLNU

11240511

3PH SS WITH DBL PIN SGL NEUT

ID	CU-REF	CU-DESC	QTY	MU-REF
A	11200702	INSULATOR W/ FIBERGLASS POLE TOP PIN-DBL	1	11240511
B	11200801	INSULATOR W/SHORT SHANK PIN	4	11240511
C	11201102	BRKT 3 EAR FG 18 IN-DBL	1	11240511
D	11201003	BRKT RACK 1 POINT 14 IN-SGL	1	11240511

**NOTE ADD MODULE 11201003 WHEN SECOND BRACKET IS REQUIRED FOR SECONDARY SERVICE**

**ASSOCIATED MODULES**

	CU-REF	CU-DESCRIPTION	QTY	MU-REF
1/0-1/0 TAN	1240-04-03	TIES PREFM SGL 1/0	3	1124-05-01
	1240-05-40	TIES PREFM SIDE 1/0 NEUTRAL	1	1124-05-01
	1240-04-23	TIES PREFM DBL 1/0	3	1124-05-11
	1240-05-40	TIES PREFM SIDE 1/0 NEUTRAL	1	1124-05-11

<b>1124-05</b>
Sheet 3 of 4
Rev: 08/01/20

**POLES, HARDWARE, AND FRAMING  
3PH SELF-SUPPORTING FRAMING  
3PH SELF SUPPORTING SGL AND DBL PIN**



	CU-REF	CU-DESCRIPTION	QTY	MU-REF
1/0-1/0 ANG	1240-05-03	TIES PREFM SIDE SGL 1/0	3	1124-05-01
	1240-05-40	TIES PREFM SIDE 1/0 NEUTRAL	1	1124-05-01
	1240-05-23	TIES PREFM SIDE DBL 1/0	3	1124-05-11
	1240-05-40	TIES PREFM SIDE 1/0 NEUTRAL	1	1124-05-11

	CU-REF	CU-DESCRIPTION	QTY	MU-REF
4/0-4/0 TAN	1240-04-06	TIES PREFM SINGL 4/0	3	1124-05-01
	1240-05-50	TIES PREFM SGL 4/0 AAC/ACSR NEUTRAL	1	1124-05-01
	1240-04-26	TIES PREFM DBL 4/0	3	1124-05-11
	1240-05-50	TIES PREFM SIDE 4/0 NEUTRAL	1	1124-05-11

	CU-REF	CU-DESCRIPTION	QTY	MU-REF
4/0-4/0 ANG	1240-05-06	TIES PREFM SIDE SGL 4/0	3	1124-05-01
	1240-05-50	TIES PREFM SIDE 4/0 NEUTRAL	1	1124-05-01
	1240-05-26	TIES PREFM SIDE DBL 4/0	3	1124-05-11
	1240-05-50	TIES PREFM SIDE 4/0 NEUTRAL	1	1124-05-11


	CU-REF	CU-DESCRIPTION	QTY	MU-REF
795-4/0 TAN	1240-04-10	TIES PREFM SGL 795	3	1124-05-01
	1240-05-50	TIES PREFM SIDE 4/0 NEUTRAL	1	1124-05-01
	1240-04-30	TIES PREFM DBL 795	3	1124-05-11
	1240-05-50	TIES PREFM SIDE 4/0 NEUTRAL	1	1124-05-11

	CU-REF	CU-DESCRIPTION	QTY	MU-REF
795-4/0 ANG	1240-05-10	TIES PREFM SIDE SGL 795	3	1124-05-01
	1240-05-50	TIES PREFM SIDE 4/0 NEUTRAL	1	1124-05-01
	1240-05-30	TIES PREFM SIDE DBL 795	3	1124-05-11
	1240-05-50	TIES PREFM SIDE 4/0 NEUTRAL	1	1124-05-11

**ASSOCIATED MODULES-GROUNDING- FULL MASTIC-ROCKY SOIL**

	CU-REF	CU-DESCRIPTION	QTY	MU-REF
1/0 N	1119-25-02	GRD STL POLE RS FULL MASTIC 1/0N	1	ALL GROUPS

	CU-REF	CU-DESCRIPTION	QTY	MU-REF
4/0 N	1119-25-07	GRD STL POLE RS FULL MASTIC 4/0N	1	ALL GROUPS

<b>1124-05</b>	<b>POLES, HARDWARE, AND FRAMING 3PH SELF-SUPPORTING FRAMING 3PH SELF SUPPORTING SGL AND DBL PIN</b>	
Sheet 4 of 4		
Rev: 08/01/20		

**ASSOCIATED MODULES-GROUNDING- FULL MASTIC-SOFT SOIL**

CU-REF	CU-DESCRIPTION	QTY	MU-REF
1/0 N	1119-25-01 GRD STL POLE SS FULL MASTIC 1/0N	1	ALL GROUPS

CU-REF	CU-DESCRIPTION	QTY	MU-REF
4/0 N	1119-25-06 GRD STL POLE SS FULL MASTIC 4/0N	1	ALL GROUPS

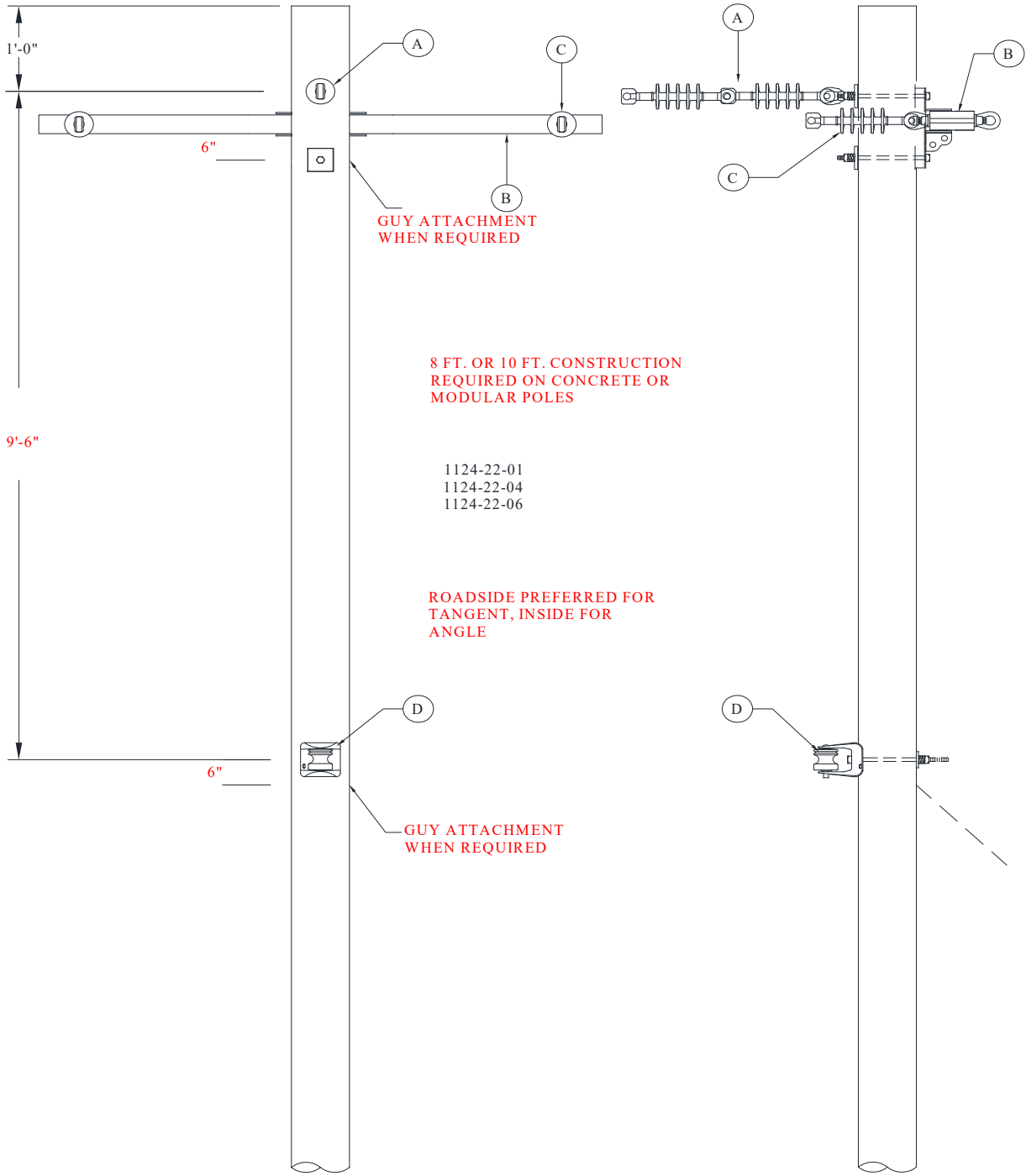
**ASSOCIATED MODULES-GROUNDING- PARTIAL MASTIC**

CU-REF	CU-DESCRIPTION	QTY	MU-REF
1/0 N	1119-26-02 GRD STL POLE W/PARTIAL MASTIC 1/0N	1	ALL GROUPS


CU-REF	CU-DESCRIPTION	QTY	MU-REF
4/0 N	1119-26-05 GRD STL POLE W/PARTIAL MASTIC 4/0N	1	ALL GROUPS

<b>1124-22</b>
Sheet 1 of 3
Rev: 08/01/20

**POLES, HARDWARE, AND FRAMING**  
**3PH SELF-SUPPORTING FRAMING**  
**3PH SELF SUPPORTING SGL DE FLAT**





<b>1124-22</b>	<b>POLES, HARDWARE, AND FRAMING</b> <b>3PH SELF-SUPPORTING FRAMING</b> <b>3PH SELF SUPPORTING SGL DE FLAT</b>	
Sheet 3 of 3		
Rev: 08/01/20		

CU-REF	CU-DESCRIPTION	QTY	MU-REF
4/0 N	1119-25-07 GRD STL POLE RS FULL MASTIC 4/0N	1	ALL GROUPS

**ASSOCIATED MODULES-GROUNDING- FULL MASTIC-SOFT SOIL**

CU-REF	CU-DESCRIPTION	QTY	MU-REF
1/0 N	1119-25-01 GRD STL POLE SS FULL MASTIC 1/0N	1	ALL GROUPS

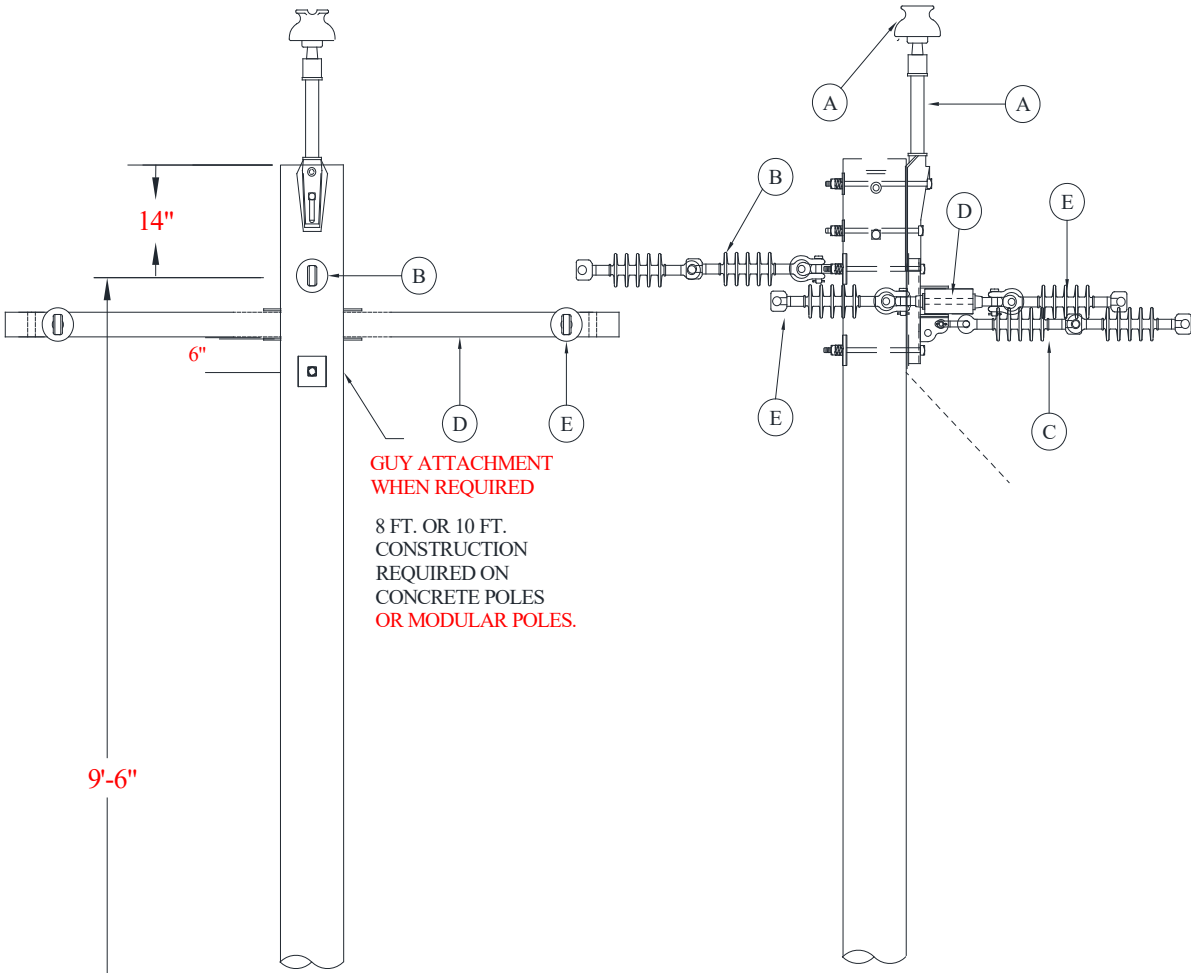
CU-REF	CU-DESCRIPTION	QTY	MU-REF
4/0 N	1119-25-06 GRD STL POLE SS FULL MASTIC 4/0N	1	ALL GROUPS

**ASSOCIATED MODULES-GROUNDING- PARTIAL MASTIC**

CU-REF	CU-DESCRIPTION	QTY	MU-REF
1/0 N	1119-26-02 GRD STL POLE W/PARTIAL MASTIC 1/0N	1	ALL GROUPS

CU-REF	CU-DESCRIPTION	QTY	MU-REF
4/0 N	1119-26-05 GRD STL POLE W/PARTIAL MASTIC 4/0N	1	ALL GROUPS

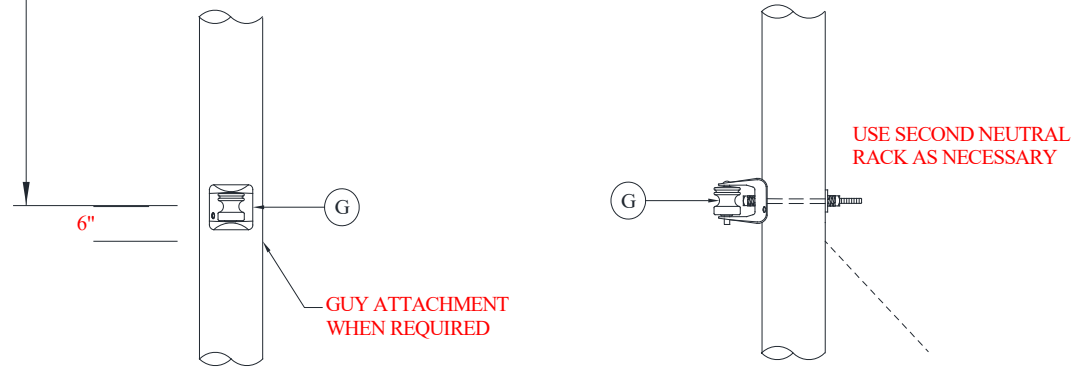
POLES, HARDWARE, AND FRAMING  
 3PH SELF-SUPPORTING FRAMING  
 3PH SELF SUPPORTING DBL DE FLAT




GUY ATTACHMENT  
 WHEN REQUIRED

8 FT. OR 10 FT.  
 CONSTRUCTION  
 REQUIRED ON  
 CONCRETE POLES  
 OR MODULAR POLES.

ANGLE		REDUCED TENSION
1124-30-01	5' ARM	1124-30-03
1124-30-06	8' ARM	1124-30-08
1124-30-11	10' ARM	1124-30-13





<b>1124-30</b>	<b>POLES, HARDWARE, AND FRAMING 3PH SELF-SUPPORTING FRAMING 3PH SELF SUPPORTING DBL DE FLAT</b>	
Sheet 2 of 4		
Rev: 08/01/20		

**MU**

**REFERENCE FOR SPAN LENGTH/ANGLE PARAMETERS**

MU-REF	WIRE	PARAMETERS
*1124-30-01	1/0	Angle pole > 30 degrees and < 60 degrees
1124-30-06	4/0	Angle pole > 18 degrees and < 30 degrees
1124-30-11	795	Angle pole > 18 degrees and < 30 degrees
1124-30-03	1/0	Full Tension Deadend w/Reduced Tension Span
1124-30-08	4/0	Full Tension Deadend w/Reduced Tension Span
1124-30-13	795	Full Tension Deadend w/Reduced Tension Span

**MU- ID**

**MU- REF**

**MU- DESCRIPTION**

3PHSSDDEFLT5FTARM

11243001

3PH SS DBL DE FLAT- ANGLE 5 FT ARM

ID	CU- REF	CU- DESC	QTY	MU- REF
A	11200701	INSULATOR W/ FIBERGLASS POLE TOP PIN- SGL	1	11243001
B	11201804	INSULATOR DE DBL W/3/4" EYENUT	1	11243001
C	11201807	INSULATOR DE DBL W/3/4" EYEBOLT	1	11243001
D	11201610	ARM FIBERGLASS DE HD 5 FT	1	11243001
E	11201701	INSULATOR DE SGL	4	11243001
F	11200901	INSULATOR W/ADAPTOR PIN	2	11243001
G	11201009	BRKT RACK 1 POINT 14 IN- DBL	1	11243001

3PHSSDDERTN5FTARM

11243003

3PH SS DBL DE FLAT REDUCED TEN 5FT ARM

ID	CU- REF	CU- DESC	QTY	MU- REF
A	11200701	INSULATOR W/ FIBERGLASS POLE TOP PIN- SGL	1	11243003
B	11201807	INSULATOR DE DBL W/3/4" EYEBOLT	1	11243003
C	11201804	INSULATOR DE DBL W/3/4" EYENUT	1	11243003
D	11201610	ARM FIBERGLASS DE HD 5 FT	1	11243003
E	11201701	INSULATOR DE SGL	4	11243003
F	11200901	INSULATOR W/ADAPTOR PIN	2	11243003
G	11201003	BRKT RACK 1 POINT 14 IN- SGL	2	11243003

3PHSSDDEFLT8FTARM

11243006

3PH SS DBL DE FLAT- ANGLE 8 FT ARM

ID	CU- REF	CU- DESC	QTY	MU- REF
A	11200701	INSULATOR W/ FIBERGLASS POLE TOP PIN- SGL	1	11243006
B	11201807	INSULATOR DE DBL W/3/4" EYEBOLT	1	11243006
C	11201804	INSULATOR DE DBL W/3/4" EYENUT	1	11243006
D	11201611	ARM FIBERGLASS DE HD 8 FT	1	11243006
E	11201701	INSULATOR DE SGL	4	11243006
F	11200901	INSULATOR W/ADAPTOR PIN	2	11243006
G	11201009	BRKT RACK 1 POINT 14 IN- DBL	1	11243006

3PHSSDDERTN8FTARM

11243008

3PH SS DBL DE FLAT REDUCED TEN 8FT ARM



<b>1124-30</b>
Sheet 4 of 4
Rev: 08/01/20

**POLES, HARDWARE, AND FRAMING  
3PH SELF-SUPPORTING FRAMING  
3PH SELF SUPPORTING DBL DE FLAT**



	<b>CU-REF</b>	<b>CU-DESCRIPTION</b>	<b>QTY</b>	<b>MU-REF</b>
4/0-4/0	1240-01-01	DEAD END CLAMP 1/0-4/0	6	ALL GROUPS
	1240-04-06	TIES PREFM SGL 4/0	3	ALL GROUPS
	1240-03-40	DEAD END PREFM 4/0 AAC/ACSR	2	ALL GROUPS
	1245-02-07	H-TAP CU/AL 4/0-4/0	8	ALL GROUPS

	<b>CU-REF</b>	<b>CU-DESCRIPTION</b>	<b>QTY</b>	<b>MU-REF</b>
795-4/0	1240-01-07	DEAD END CLAMP 795	6	ALL GROUPS
	1240-04-10	TIES PREFM SGL 795	3	ALL GROUPS
	1240-03-40	DEAD END PREFM 4/0 AAC/ACSR	2	ALL GROUPS
	1245-07-77	CLAMP 2-BOLT 795-795	6	ALL GROUPS
	1245-02-07	H-TAP CU/AL 4/0-4/0	2	ALL GROUPS

**ASSOCIATED MODULES-GROUNDING- FULL MASTIC-ROCKY SOIL**

	<b>CU-REF</b>	<b>CU-DESCRIPTION</b>	<b>QTY</b>	<b>MU-REF</b>
1/0 N	1119-25-02	GRD STL POLE RS FULL MASTIC 1/0N	1	ALL GROUPS

	<b>CU-REF</b>	<b>CU-DESCRIPTION</b>	<b>QTY</b>	<b>MU-REF</b>
4/0 N	1119-25-07	GRD STL POLE RS FULL MASTIC 4/0N	1	ALL GROUPS

**ASSOCIATED MODULES-GROUNDING- FULL MASTIC-SOFT SOIL**

	<b>CU-REF</b>	<b>CU-DESCRIPTION</b>	<b>QTY</b>	<b>MU-REF</b>
1/0 N	1119-25-01	GRD STL POLE SS FULL MASTIC 1/0N	1	ALL GROUPS

	<b>CU-REF</b>	<b>CU-DESCRIPTION</b>	<b>QTY</b>	<b>MU-REF</b>
4/0 N	1119-25-06	GRD STL POLE SS FULL MASTIC 4/0N	1	ALL GROUPS

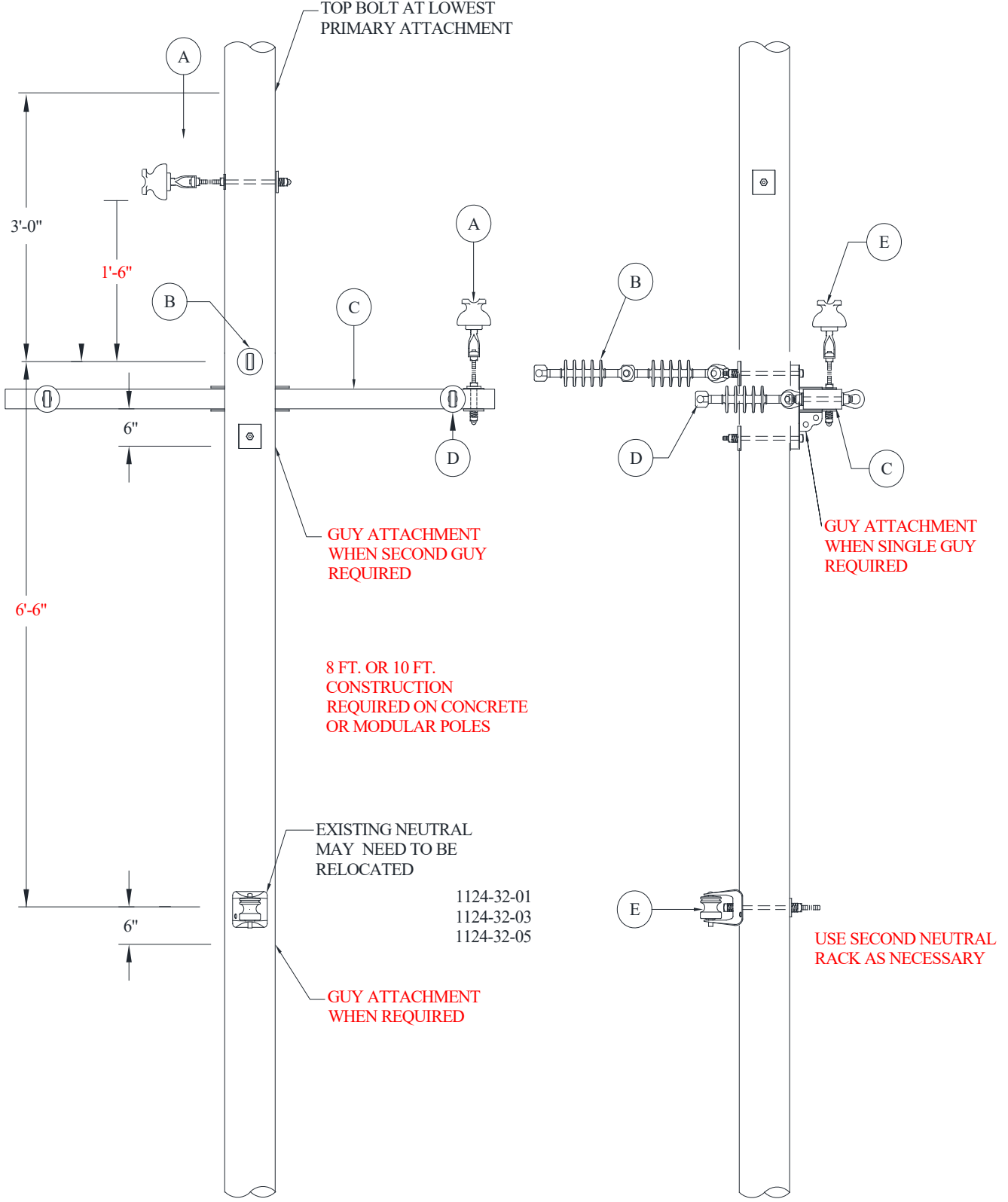
**ASSOCIATED MODULES-GROUNDING- PARTIAL MASTIC**

	<b>CU-REF</b>	<b>CU-DESCRIPTION</b>	<b>QTY</b>	<b>MU-REF</b>
1/0 N	1119-26-02	GRD STL POLE W/PARTIAL MASTIC 1/0N	1	ALL GROUPS

	<b>CU-REF</b>	<b>CU-DESCRIPTION</b>	<b>QTY</b>	<b>MU-REF</b>
4/0 N	1119-26-05	GRD STL POLE W/PARTIAL MASTIC 4/0N	1	ALL GROUPS

<b>1124-32</b>
Sheet 1 of 4
Rev: 08/01/20

**POLES, HARDWARE, AND FRAMING**  
**3PH SELF-SUPPORTING FRAMING**  
**3PH SELF SUPPORTING SGL DE JUNCTION FLAT**





<b>1124-32</b>
Sheet 3 of 4
Rev: 08/01/20

**POLES, HARDWARE, AND FRAMING**  
**3PH SELF-SUPPORTING FRAMING**  
**3PH SELF SUPPORTING SGL DE JUNCTION FLAT**



**ASSOCIATED MODULES- JUMPERS**

	CU-REF	CU-DESCRIPTION	QTY	MU-REF
1/0-1/0	1245-02-04	H-TAP CU/AL 1/0-1/0	7	ALL GROUPS
	1240-04-03	TIES PREFM SGL 1/0	2	ALL GROUPS

4/0-4/0	1245-02-07	H-TAP CU/AL 4/0-4/0	7	ALL GROUPS
	1240-04-06	TIES PREFM SGL 4/0	2	ALL GROUPS

	CU-REF	CU-DESCRIPTION	QTY	MU-REF
4/0-795	1245-07-85	CLAMP 1-BOLT CU/AL 795-336	6	ALL GROUPS
	1240-04-06	TIES PREFM SGL 4/0	2	ALL GROUPS
	1245-02-07	H-TAP CU/AL 4/0-4/0	1	ALL GROUPS

	CU-REF	CU-DESCRIPTION	QTY	MU-REF
795-795	1245-07-77	CLAMP 2-BOLT 795-795	6	ALL GROUPS
	1240-04-10	TIES PREFM SGL 795	2	ALL GROUPS
	1245-02-07	H-TAP CU/AL 4/0-4/0	1	ALL GROUPS

**ASSOCIATED MODULES-FUSED-5 FT ARM**


	CU-REF	CU-DESCRIPTION	QTY	MU-REF
1/0-1/0	1245-02-04	H-TAP CU/AL 1/0-1/0	1	ALL GROUPS
	1368-12-10	LINE FUSE ASSY 5' DE ARM 1/0 PRI	1	ALL GROUPS

	CU-REF	CU-DESCRIPTION	QTY	MU-REF
1/0-4/0	1245-02-06	H-TAP CU/AL 4/0-1/0	1	ALL GROUPS
	1368-12-11	LINE FUSE ASSY 5' DE ARM 4/0 PRI	1	ALL GROUPS

	CU-REF	CU-DESCRIPTION	QTY	MU-REF
1/0-795	1245-02-06	H-TAP CU/AL 4/0-1/0	1	ALL GROUPS
	1368-12-14	LINE FUSE ASSY 5' DE ARM 795 PRI	1	ALL GROUPS

**ASSOCIATED MODULES-FUSED-8/10 FT ARM**

	CU-REF	CU-DESCRIPTION	QTY	MU-REF
1/0-1/0	1245-02-04	H-TAP CU/AL 1/0-1/0	1	ALL GROUPS
	1368-12-20	LINE FUSE ASSY 8/10' DE ARM 1/0 PRI	1	ALL GROUPS

<b>1124-32</b>	<b>POLES, HARDWARE, AND FRAMING 3PH SELF-SUPPORTING FRAMING 3PH SELF SUPPORTING SGL DE JUNCTION FLAT</b>	
Sheet 4 of 4		
Rev: 08/01/20		

	CU-REF	CU-DESCRIPTION	QTY	MU-REF
1/0-4/0	1245-02-06	H-TAP CU/AL 4/0-1/0	1	ALL GROUPS
	1368-12-21	LINE FUSE ASSY 8/10' DE ARM 4/0 PRI	1	ALL GROUPS

	CU-REF	CU-DESCRIPTION	QTY	MU-REF
1/0-795	1245-02-06	H-TAP CU/AL 4/0-1/0	1	ALL GROUPS
	1368-12-24	LINE FUSE ASSY 8/10' DE ARM 795 PRI	1	ALL GROUPS

**ASSOCIATED MODULES-HOT TAP JUMPERS**

	CU-REF	CU-DESCRIPTION	QTY	MU-REF
1/0-1/0	1245-02-04	H-TAP CU/AL 1/0-1/0	1	ALL GROUPS
	1368-05-40	JUMPER ASSY - HOT TAP 1/0 AL PRI	3	ALL GROUPS

**ASSOCIATED MODULES-GROUNDING- FULL MASTIC-ROCKY SOIL**

	CU-REF	CU-DESCRIPTION	QTY	MU-REF
1/0 N	1119-25-02	GRD STL POLE RS FULL MASTIC 1/0N	1	ALL GROUPS

	CU-REF	CU-DESCRIPTION	QTY	MU-REF
4/0 N	1119-25-07	GRD STL POLE RS FULL MASTIC 4/0N	1	ALL GROUPS

**ASSOCIATED MODULES-GROUNDING- FULL MASTIC-SOFT SOIL**

	CU-REF	CU-DESCRIPTION	QTY	MU-REF
1/0 N	1119-25-01	GRD STL POLE SS FULL MASTIC 1/0N	1	ALL GROUPS

	CU-REF	CU-DESCRIPTION	QTY	MU-REF
4/0 N	1119-25-06	GRD STL POLE SS FULL MASTIC 4/0N	1	ALL GROUPS

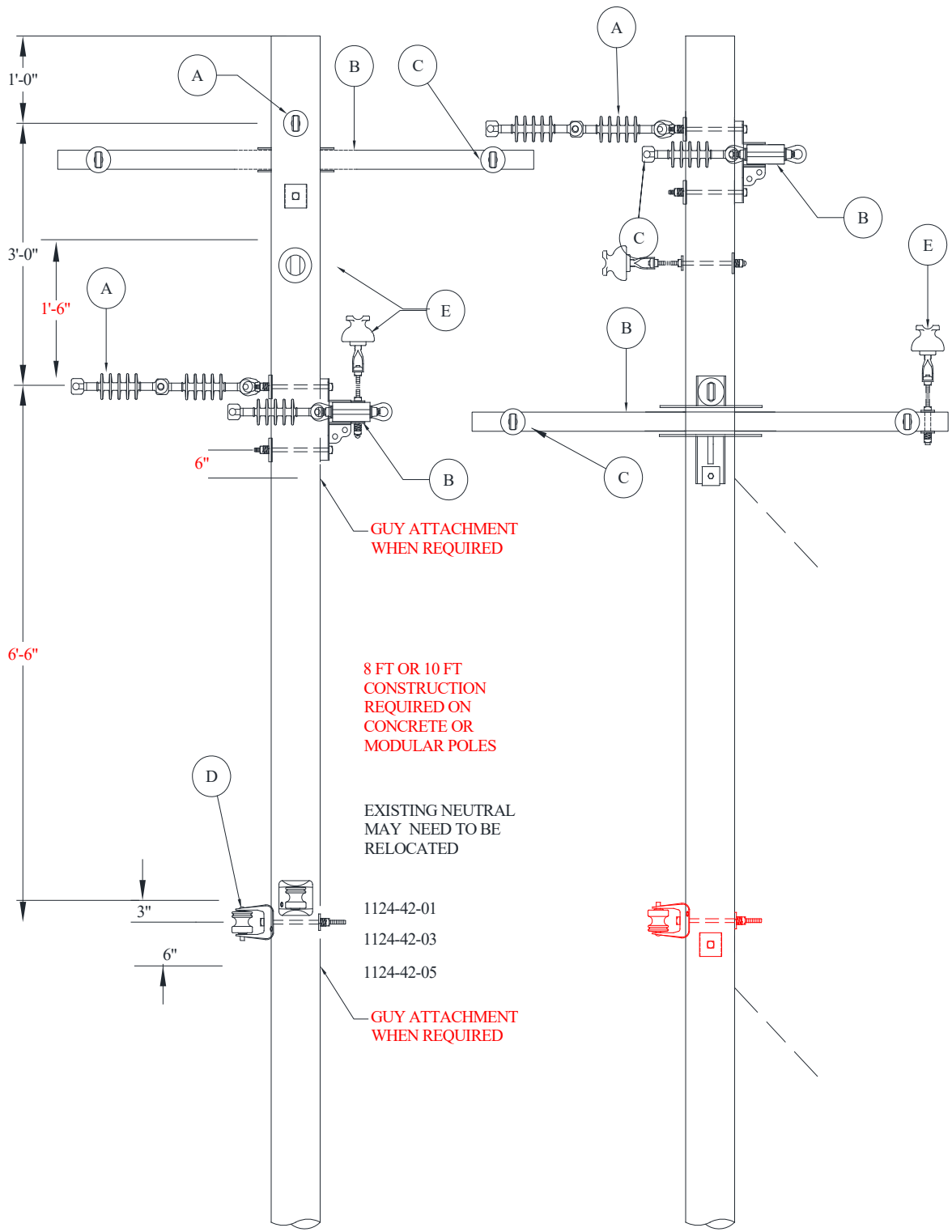
**ASSOCIATED MODULES-GROUNDING- PARTIAL MASTIC**

	CU-REF	CU-DESCRIPTION	QTY	MU-REF
1/0 N	1119-26-02	GRD STL POLE W/PARTIAL MASTIC 1/0N	1	ALL GROUPS

	CU-REF	CU-DESCRIPTION	QTY	MU-REF
4/0 N	1119-26-05	GRD STL POLE W/PARTIAL MASTIC 4/0N	1	ALL GROUPS

1124-42
Sheet 1 of 3
Rev: 08/01/20

**POLES, HARDWARE, AND FRAMING**  
**3PH SELF-SUPPORTING FRAMING**  
**3PH SELF SUPPORTING SGL DE FLAT CORNER POLE**







<b>1124-42</b>
Sheet 3 of 3
Rev: 08/01/20

**POLES, HARDWARE, AND FRAMING  
3PH SELF-SUPPORTING FRAMING  
3PH SELF SUPPORTING SGL DE FLAT CORNER POLE**



	CU-REF	CU-DESCRIPTION	QTY	MU-REF
795-4/0	1240-01-07	DEAD END CLAMP 795	6	ALL GROUPS
	1240-03-40	DEAD END PREFM 4/0 AAC/ACSR	2	ALL GROUPS
	1240-04-10	TIES PREFM SGL 795	1	ALL GROUPS
	1245-07-77	CLAMP 2 BOLT 795-795	6	ALL GROUPS
	1245-02-07	H-TAP CU/AL 4/0-4/0	1	ALL GROUPS

**ASSOCIATED MODULES-GROUNDING- FULL MASTIC-ROCKY SOIL**

	CU-REF	CU-DESCRIPTION	QTY	MU-REF
1/0 N	1119-25-02	GRD STL POLE RS FULL MASTIC 1/0N	1	ALL GROUPS

	CU-REF	CU-DESCRIPTION	QTY	MU-REF
4/0 N	1119-25-07	GRD STL POLE RS FULL MASTIC 4/0N	1	ALL GROUPS

**ASSOCIATED MODULES-GROUNDING- FULL MASTIC-SOFT SOIL**

	CU-REF	CU-DESCRIPTION	QTY	MU-REF
1/0 N	1119-25-01	GRD STL POLE SS FULL MASTIC 1/0N	1	ALL GROUPS

	CU-REF	CU-DESCRIPTION	QTY	MU-REF
4/0 N	1119-25-06	GRD STL POLE SS FULL MASTIC 4/0N	1	ALL GROUPS

**ASSOCIATED MODULES-GROUNDING- PARTIAL MASTIC**

	CU-REF	CU-DESCRIPTION	QTY	MU-REF
1/0 N	1119-26-02	GRD STL POLE W/PARTIAL MASTIC 1/0N	1	ALL GROUPS

	CU-REF	CU-DESCRIPTION	QTY	MU-REF
4/0 N	1119-26-05	GRD STL POLE W/PARTIAL MASTIC 4/0N	1	ALL GROUPS