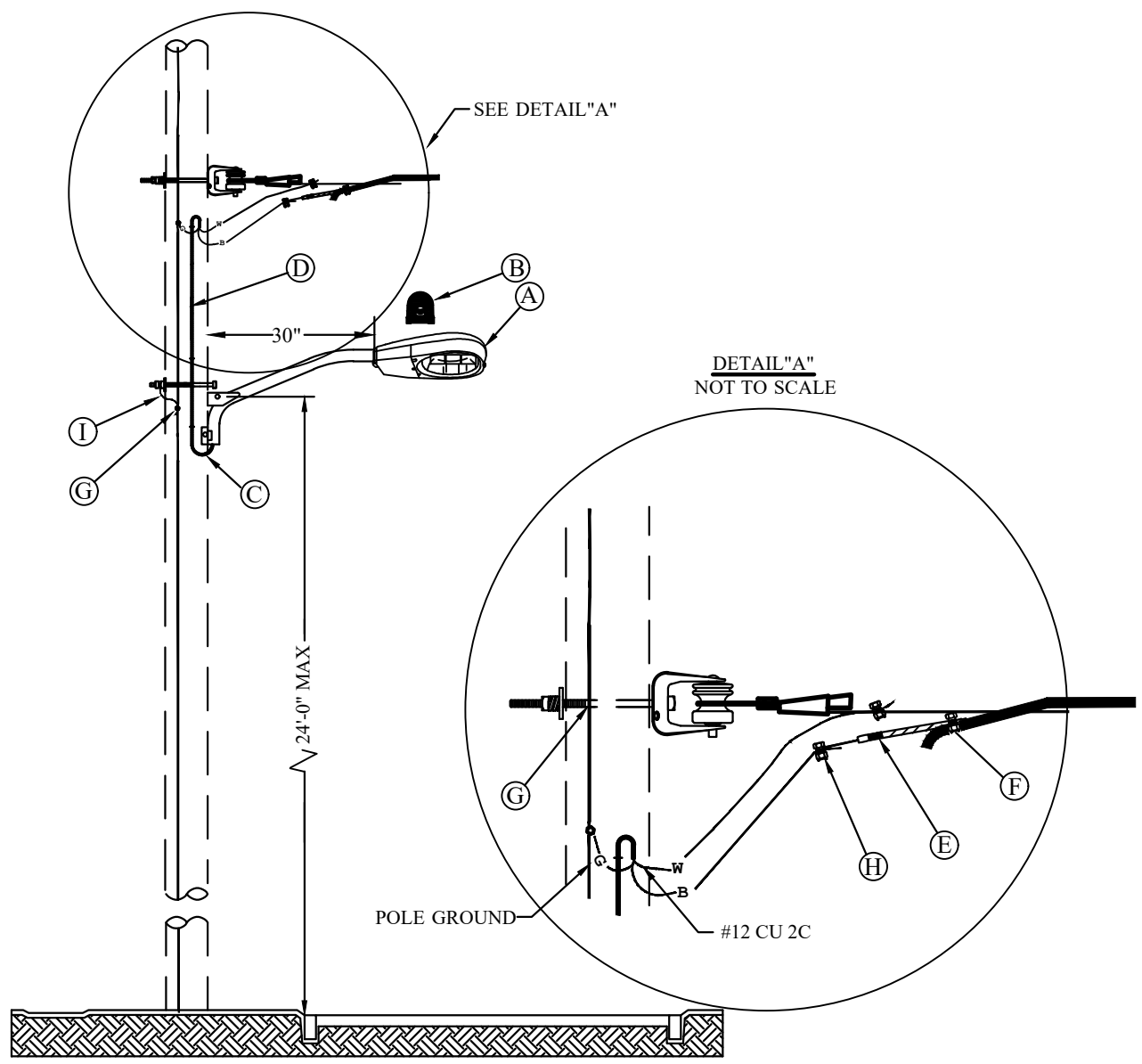


1945

STANDARD OVERHEAD STREETLIGHTS

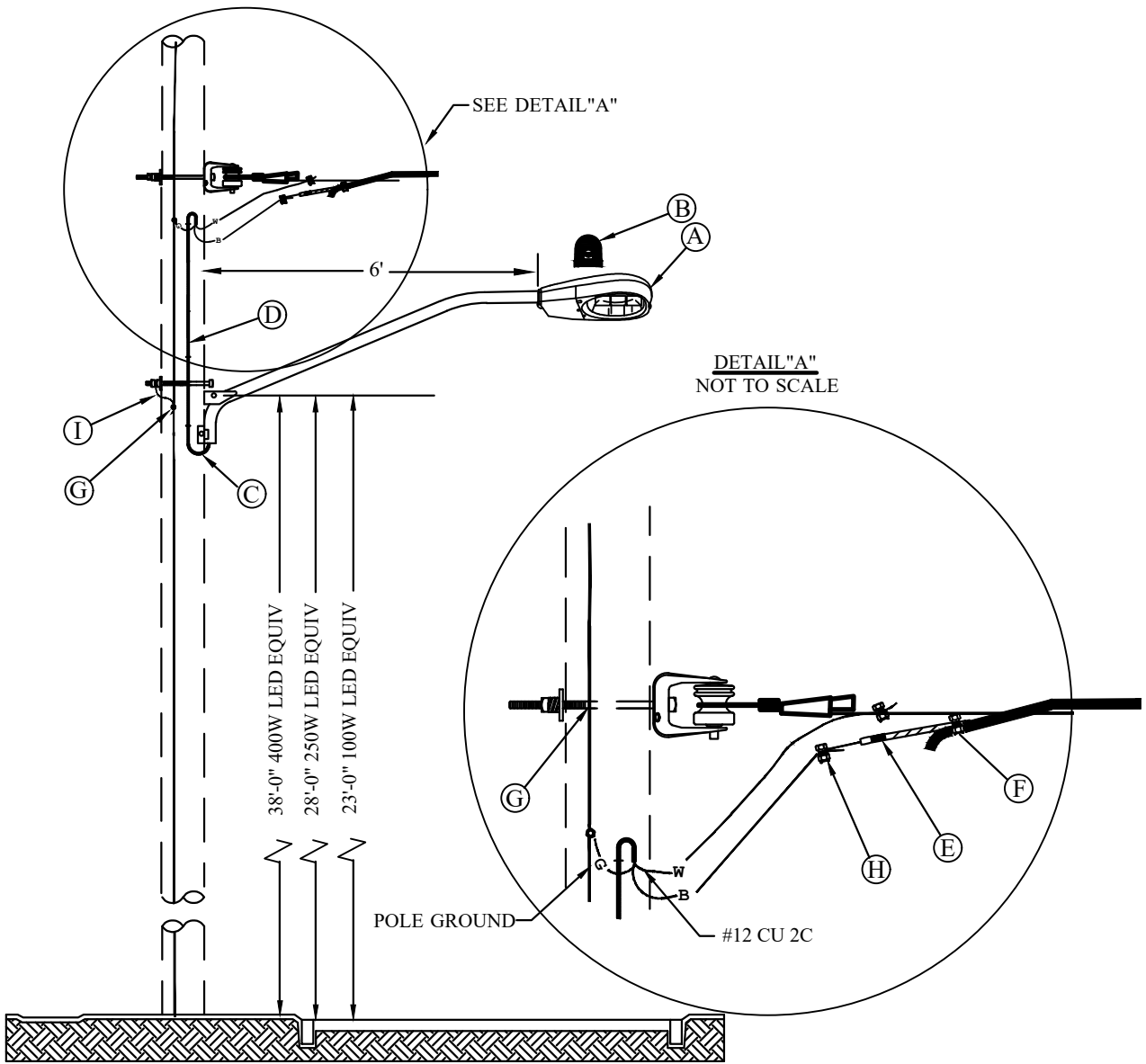
CONTAINS

- 1945-10 ARM MAST 30IN 100W EQUIV. ASSEMBLY**
- 1945-12 ARM MAST 6FT 100W, 250W, & 400W EQUIV. ASSEMBLY**
- 1945-14 ARM MAST 10FT 100W, 250W, & 400W EQUIV. ASSEMBLY**
- 1945-16 ARM MAST 16FT 100W EQUIV. ASSEMBLY**
- 1945-20 ARM MAST 16FT ASSEMBLY ON STEEL POLE**



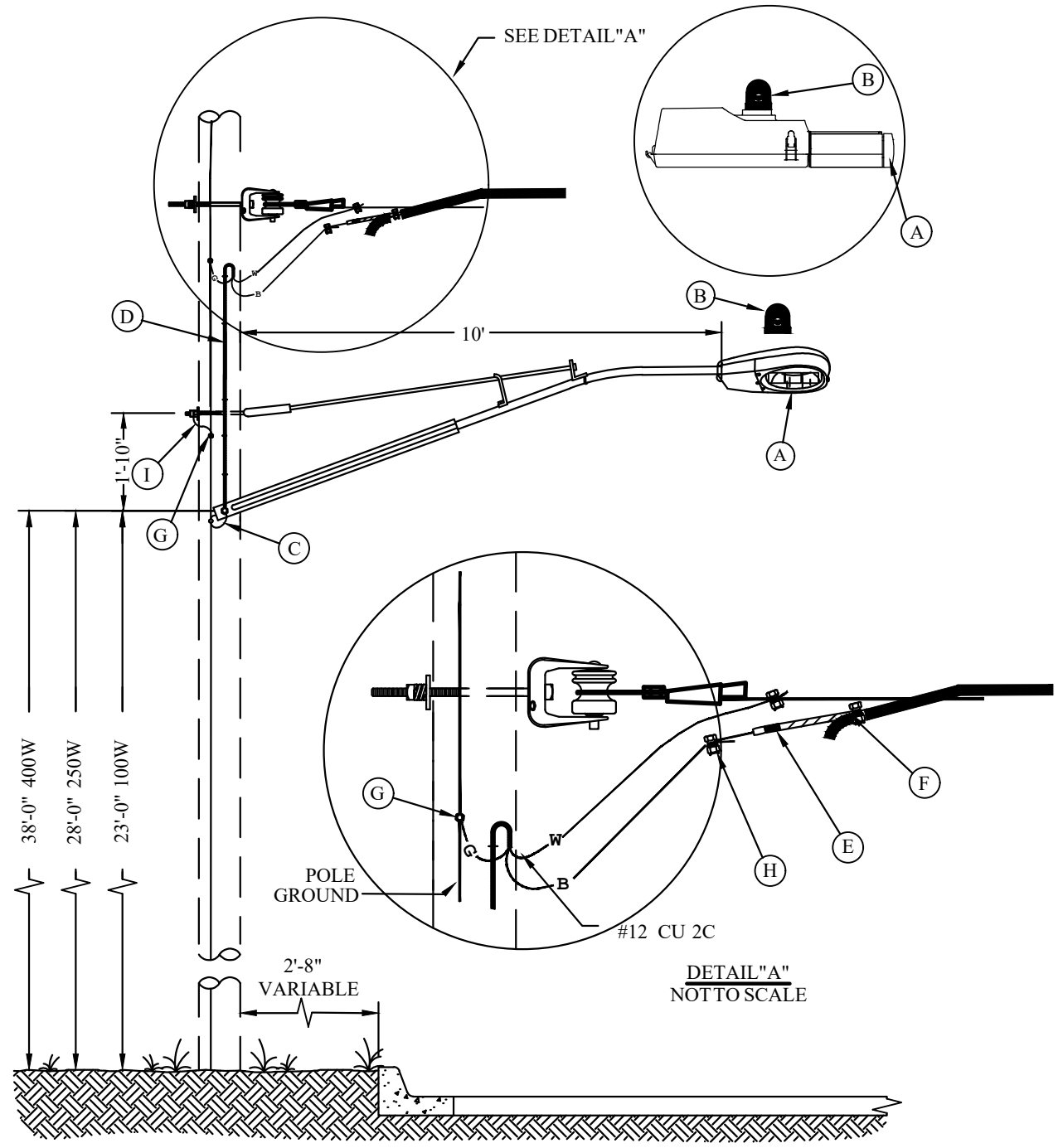
MU-REF	MU-ID	MU-DESCRIPTION
19451001	ARMMAST30ASSY100EQUVLED	ARM MAST 30IN ASSY 100EQUV LED

REV_DATE:
04/01/26



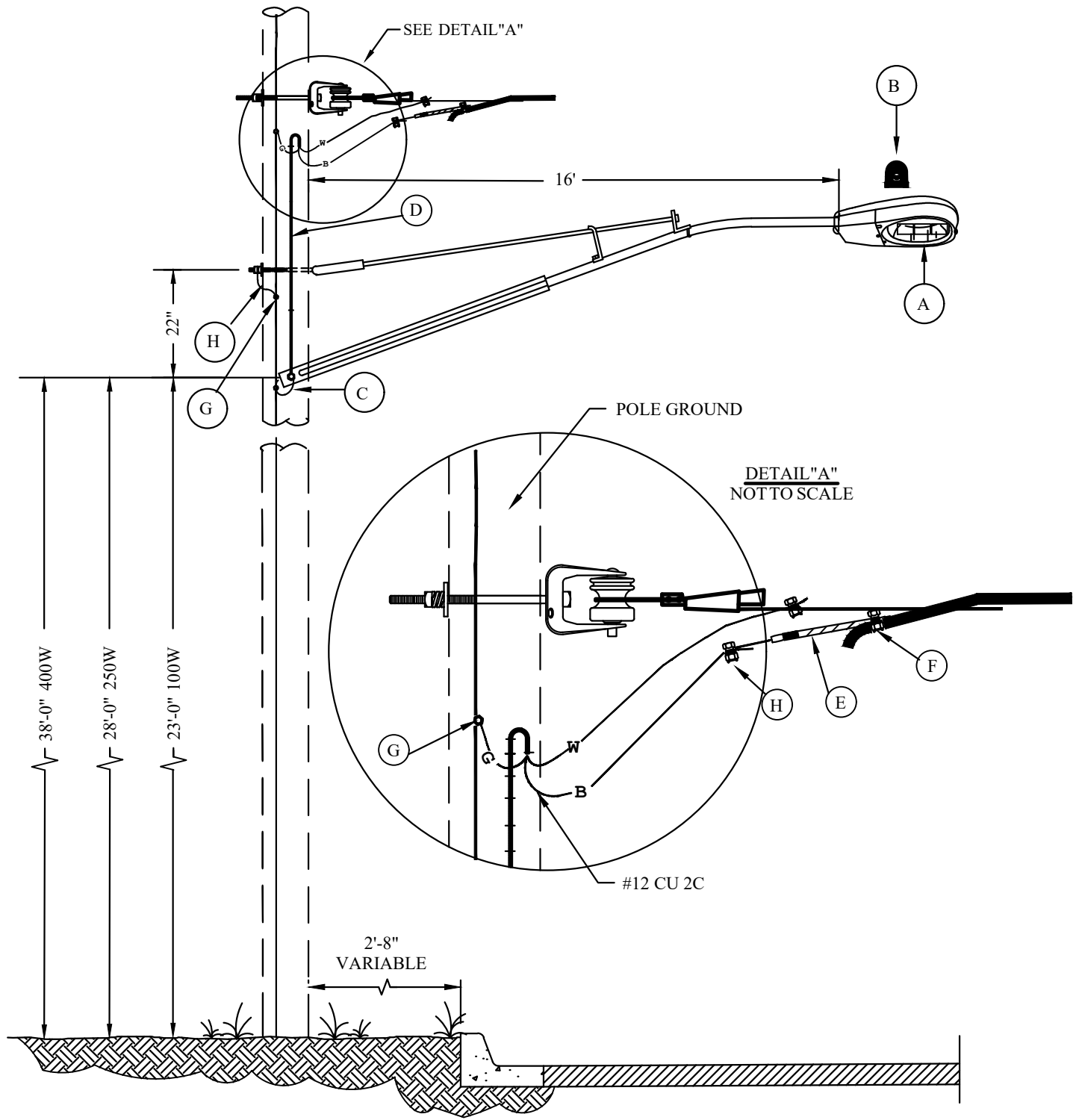
MU-REF	MU-ID	MU-DESCRIPTION
19451221	ARMMAST6ASSY100LEDEQUV	ARM MAST 6 FT ASSY 100W LED EQUIV
19451226	ARMMAST6ASSY250LEDEQUV	ARM MAST 6 FT ASSY 250W LED EQUIV
19451231	ARMMAST6ASSY400LEDEQUV	ARM MAST 6 FT ASSY 400W LED EQUIV

REV_DATE:
04/01/26



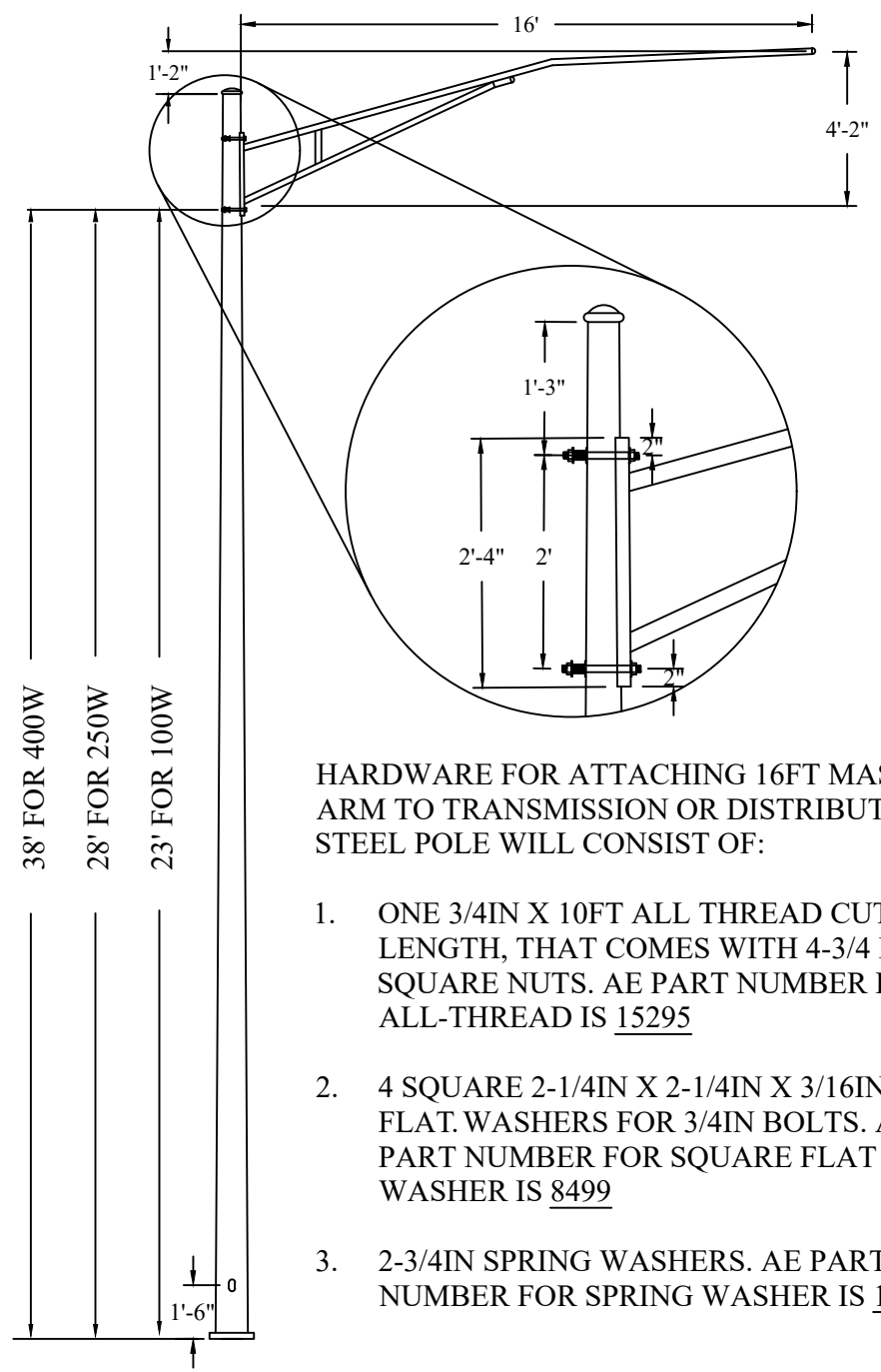
MU-REF	MU-ID	MU-DESCRIPTION
19451426	ARMMAST10ASSY100WLEDEQUV	ARM MAST 10 FT ASSY 100WLED EQUIV
19451431	ARMMAST10ASSY250WLEDEQUV	ARM MAST 10 FT ASSY 250WLED EQUIV
19451436	ARMMAST10ASSY400WLEDEQUV	ARM MAST 10 FT ASSY 400WLED EQUIV

REV_DATE:
 04/01/26



MU-REF	MU-ID	MU-DESCRIPTION
19451616	ARMMAST16FTASSY100EQUVLED	ARM MAST 16 FT ASSY 100W EQUIV LED
19451626	ARMMAST16FTASSY250WEQUIVL	ARM MAST 16 FT ASSY 250W EQUIV LED
19451636	ARMMAST16FTASSY400WEQUIVL	ARM MAST 16 FT ASSY 400W EQUIV LED

REV_DATE:
04/01/26



HARDWARE FOR ATTACHING 16FT MAST ARM TO TRANSMISSION OR DISTRIBUTION STEEL POLE WILL CONSIST OF:

1. ONE 3/4IN X 10FT ALL THREAD CUT TO LENGTH, THAT COMES WITH 4-3/4 INCH SQUARE NUTS. AE PART NUMBER FOR ALL-THREAD IS 15295
2. 4 SQUARE 2-1/4IN X 2-1/4IN X 3/16IN FLAT. WASHERS FOR 3/4IN BOLTS. AE PART NUMBER FOR SQUARE FLAT WASHER IS 8499
3. 2-3/4IN SPRING WASHERS. AE PART NUMBER FOR SPRING WASHER IS 1235

CU-REF	CU-ID	CU-DESCRIPTION
19452001	ARMMAST16ASSYSTEELPOLE	ARM MAST 16FT ASSY STEEL POLE