

1928

STREETLIGHT MAINTENANCE MATERIALS

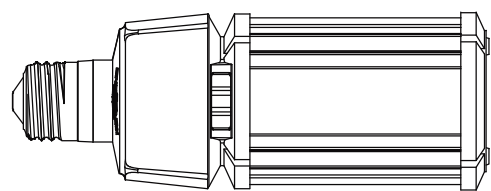
CONTAINS

- 1928-20 LAMPS, CONTROLLERS, PHOTO CELL BASE**
- 1928-35 100W, 250W, 400W COBRAHEAD LEDS**
- 1928-45 FUSE HOLDERS AND FUSES**
- 1928-50 RELAYS 30 AMP**
- 1928-55 RELAYS 60 AMP**
- 1928-60 BRACKET ARM**
- 1928-65 FLEX CONDUIT NON-METALLIC**
- 1928-70 CONNECTORS AND SPLICES**

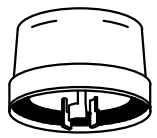
REV_DATE:
04/01/26



PHOTO STREET LIGHT
CONTROLLER 120V
1928-20-35



LAMP LED
REPLACEMENT
1928-20-90 100W
1928-20-91 175W
1928-20-92 250W



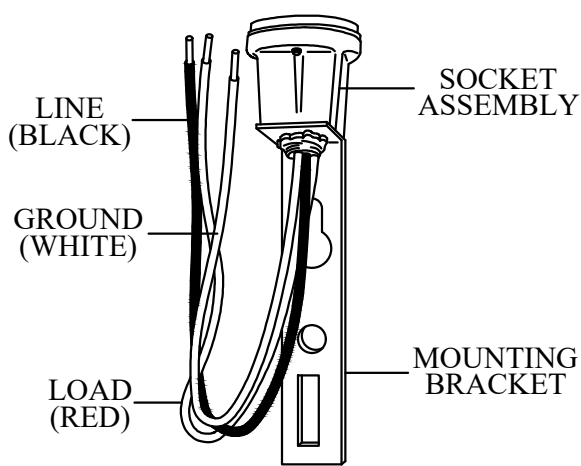
3-PRONG/TWISTLOCK
PLUG SHORTING CAP
1928-20-40



PHOTO
CELL

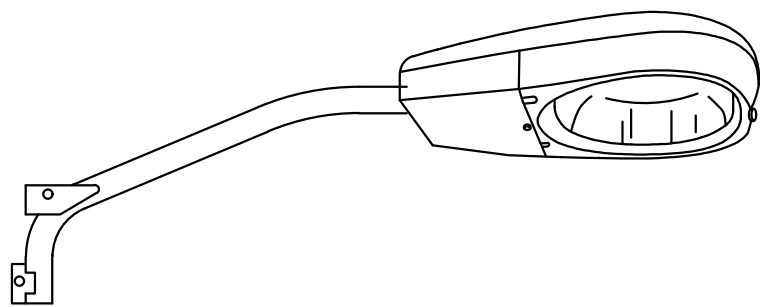


CONTROLLER COMMUNICATION
STREETLIGHT FOR COBRA
HEADS 1928-20-70

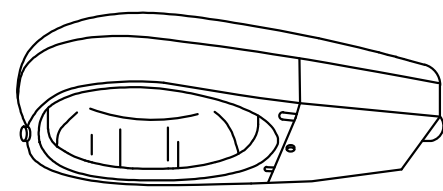


POLE-MOUNTED
ELECTRIC PHOTO CELL
BASE 1928-20-60

CU-REF	CU-ID	CU-DESCRIPTION
19282035	CNTRPE120V	CONTROLLER PE 120V/208V/240V/277V
19282040	SHORTINGCAP	SHORTING CAP
19282070	CNTRCOMSL	CONTROLLER, COMM 5 PIN HD ST LT 70-1000W
19282060	PHTCELLBASE	PHOTO CELL BASE
19282090	LMPLED100W	LAMP LED REPLACEMENT 100W
19282091	LMPLED250W	LAMP LED REPLACEMENT 250W
19282092	LMPLED400W	LAMP LED REPLACEMENT 400W



NIGHTWATCHMAN 100W EQUIVALENT LED COBRA
 FIXTURE WITH TYPE III LIGHT DISTRIBUTION WITH 30"
 ARM, LAMP, AND PHOTO CELL
 1928-35-00

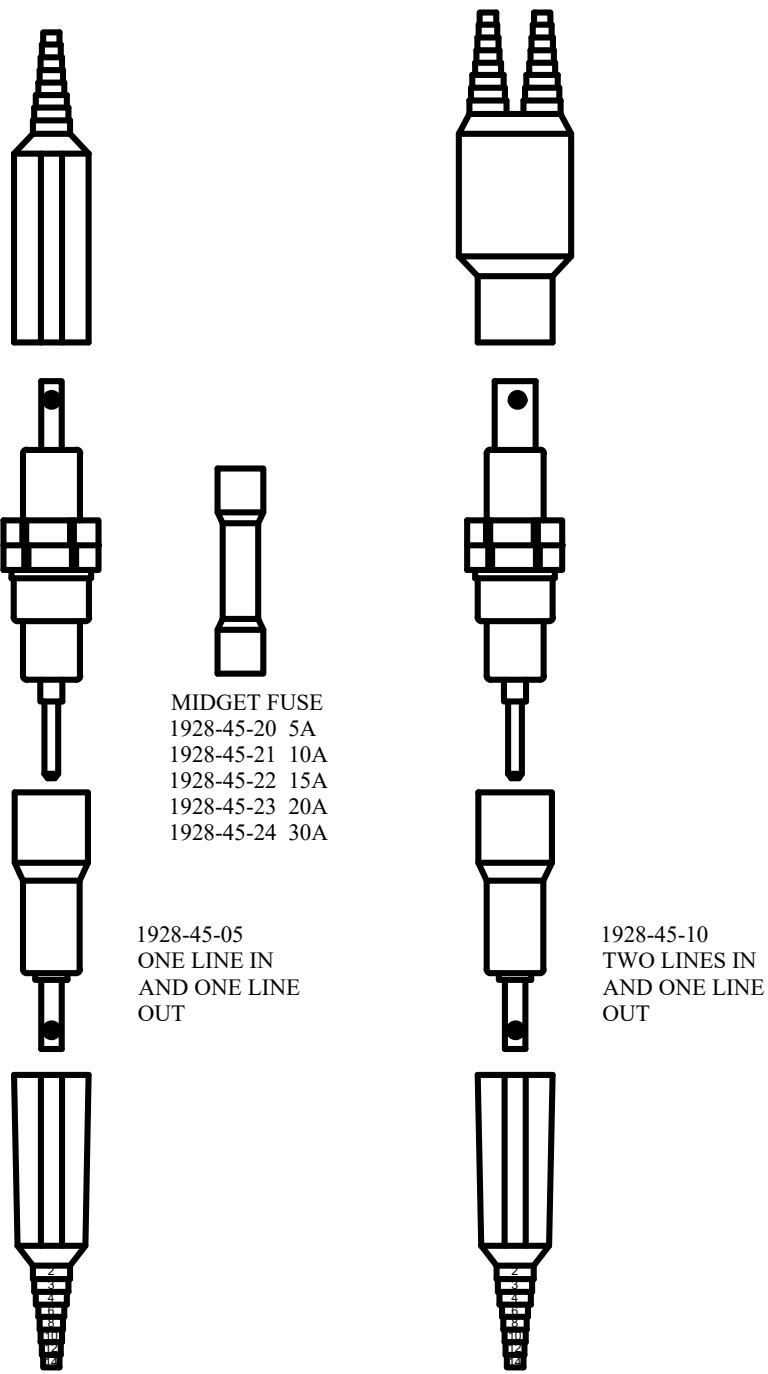


100W EQUIVALENT LED
 COBRAHEAD LUMINAIRE
 1928-35-01 - GRAY
 1928-35-02 - BLACK
 1928-35-03 - BROWN
 1928-35-04 - GREEN

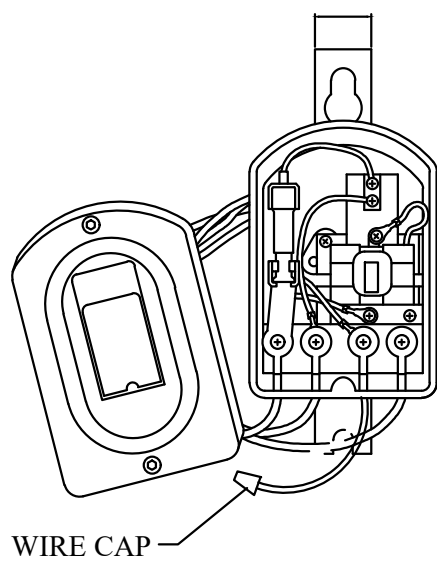
250W LED EQUIVALENT
 COBRAHEAD LUMINAIRE
 1928-35-11 - GRAY
 1928-35-12 - BLACK
 1928-35-13 - BROWN
 1928-35-14 - GREEN

400W LED EQUIVALENT
 COBRAHEAD LUMINAIRE
 1928-35-21 - GRAY
 1928-35-22 - BLACK
 1928-35-23 - BROWN
 1928-35-24 - GREEN

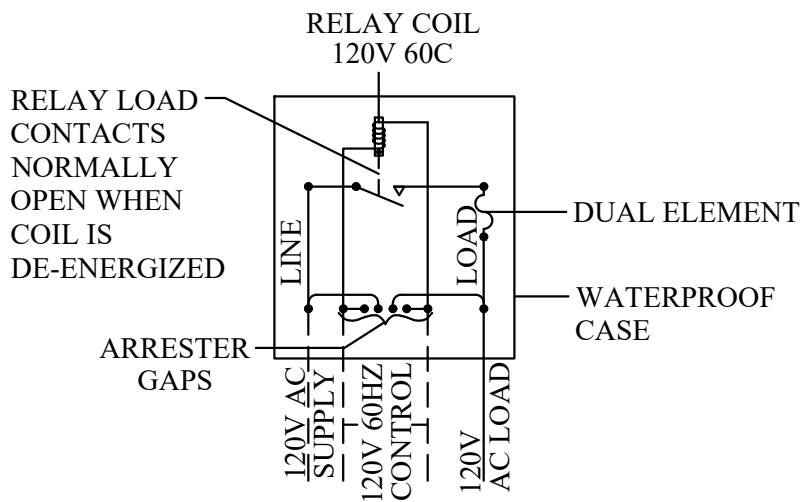
CU-REF	CU-ID	CU-DESCRIPTION
19283500	NGHTWTCHKPKLED30IN	NIGHT WATCHMAN LED PKG W/30IN ARM
19283501	LUMLED100W	LUMINAIRE LED 100W EQUIVALENT GRAY
19283502	LUMLED100WBLK	LUMINAIRE LED 100W EQUIVALENT BLACK
19283503	LUMLED100WBRN	LUMINAIRE LED 100W EQUIVALENT BROWN
19283504	LUMLED100WGRN	LUMINAIRE LED 100W EQUIVALENT GREEN
19283511	LUMLED250W	LUMINAIRE LED 250W EQUIVALENT GRAY
19283512	LUMLED250WBLK	LUMINAIRE LED 250W EQUIVALENT BLACK
19283513	LUMLED250WBRN	LUMINAIRE LED 250W EQUIVALENT BROWN
19283514	LUMLED250WGRN	LUMINAIRE LED 250W EQUIVALENT GREEN
19283521	LUMLED400W	LUMINAIRE LED 400W EQUIVALENT GRAY
19283522	LUMLED400WBLK	LUMINAIRE LED 400W EQUIVALENT BLACK
19283523	LUMLED400WBRN	LUMINAIRE LED 400W EQUIVALENT BROWN
19283524	LUMLED400WGRN	LUMINAIRE LED 400W EQUIVALENT GREEN



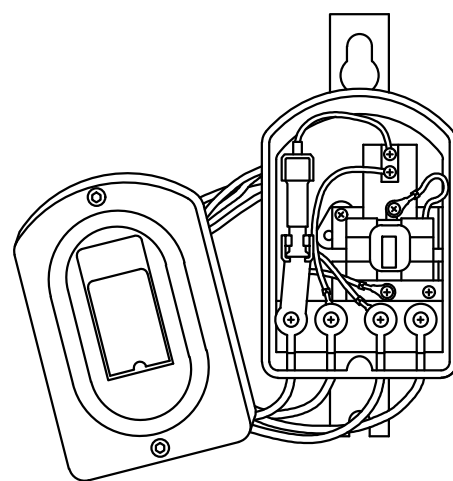
CU-REF	CU-ID	CU-DESCRIPTION
19284505	FUSEHLDRBREAK1IN1OUT	FUSE HOLDER BREAKAWAY 1IN AND 1OUT
19284510	FUSEHLDRBREAK2IN1OUT	FUSE HOLDER BREAKAWAY 2IN AND 1OUT
19284520	MIDGETFUSE5A600VAC	MIDGET FUSE 5 AMP 600V AC
19284505	FUSEHLDRBREAK1IN1OUT	FUSE HOLDER BREAKAWAY 1IN AND 1OUT
19284505	MIDGETFUSE15A600VAC	MIDGET FUSE 15 AMP 600V AC
19284523	MIDGETFUSE20A600VAC	MIDGET FUSE 20 AMP 600V AC
19284524	MIDGETFUSE30A600VAC	MIDGET FUSE 30 AMP 600V AC



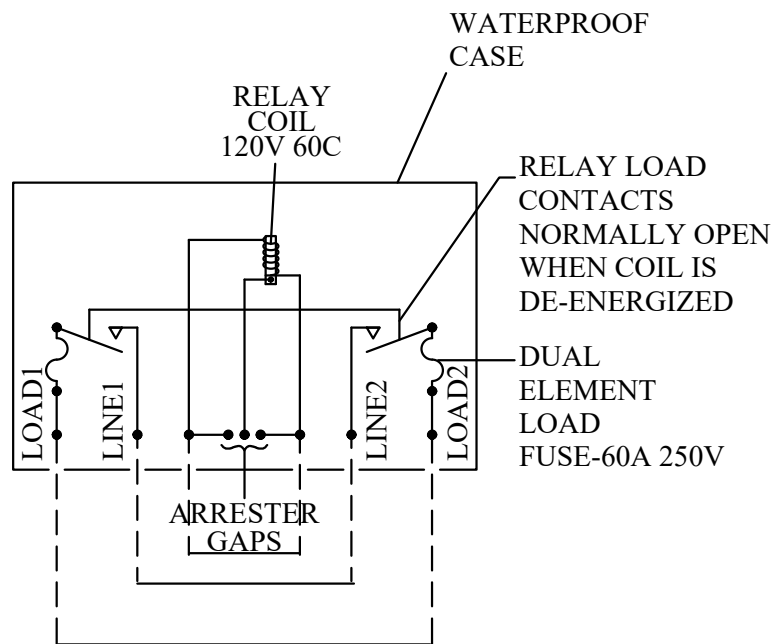
SINGLE POLE 30A RELAY 120V
 1928-50-10



CONNECTIONS FOR SINGLE POLE 30 AMP RELAY



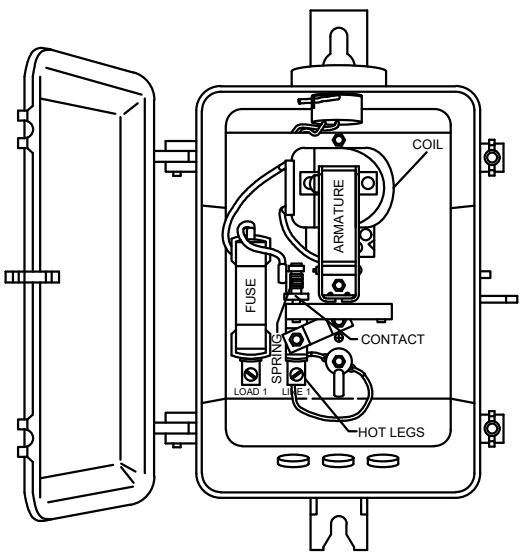
DOUBLE POLE 30A RELAY 240V
 1928-50-15



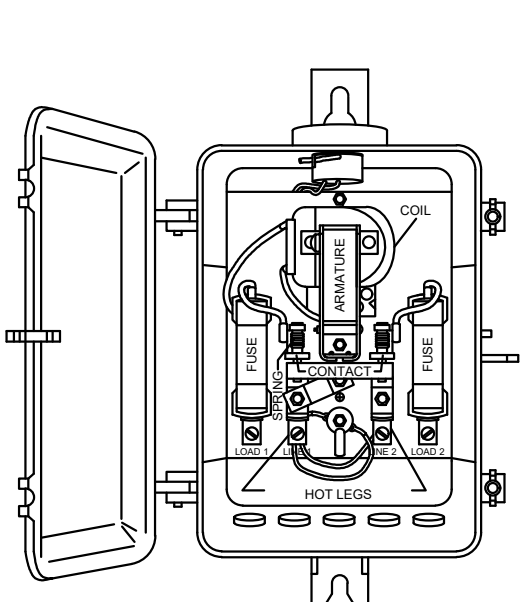
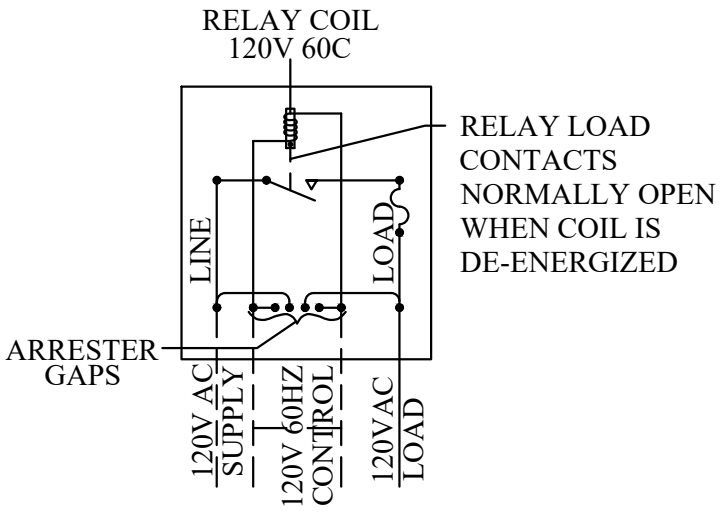
CONNECTIONS FOR DOUBLE POLE 30 AMP RELAY

CU-REF	CU-ID	CU-DESCRIPTION
19285010	RELAY30A1P	RELAY 30 AMP 1 POLE
19285015	RELAY30A2P	RELAY 30 AMP 2 POLE

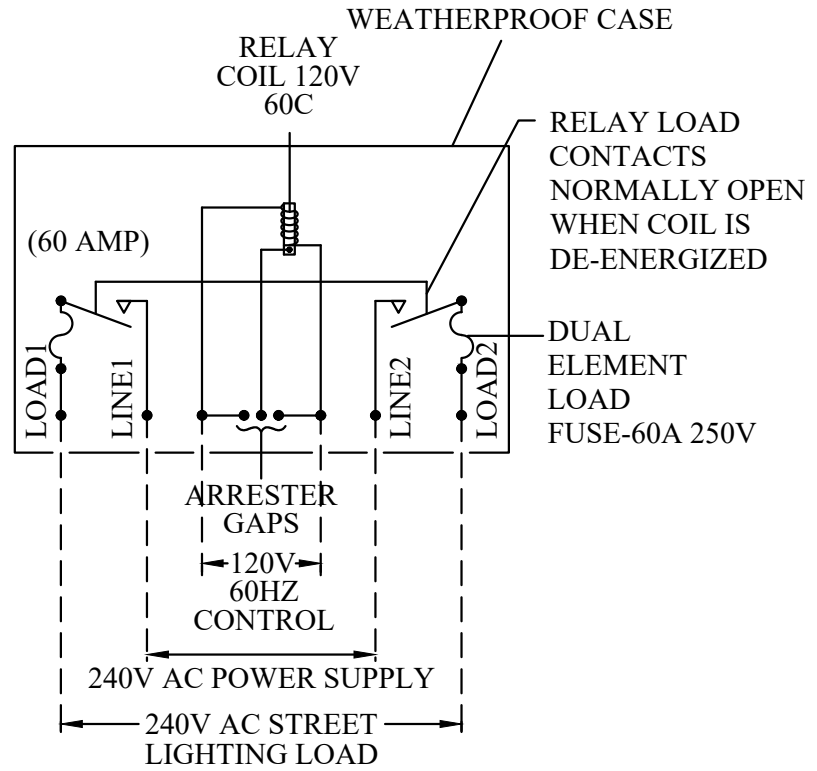
REV_DATE:
04/01/26



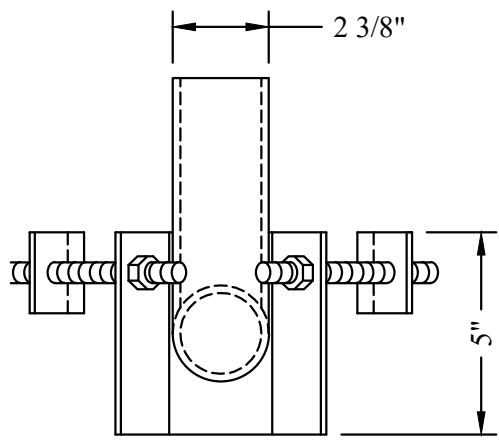
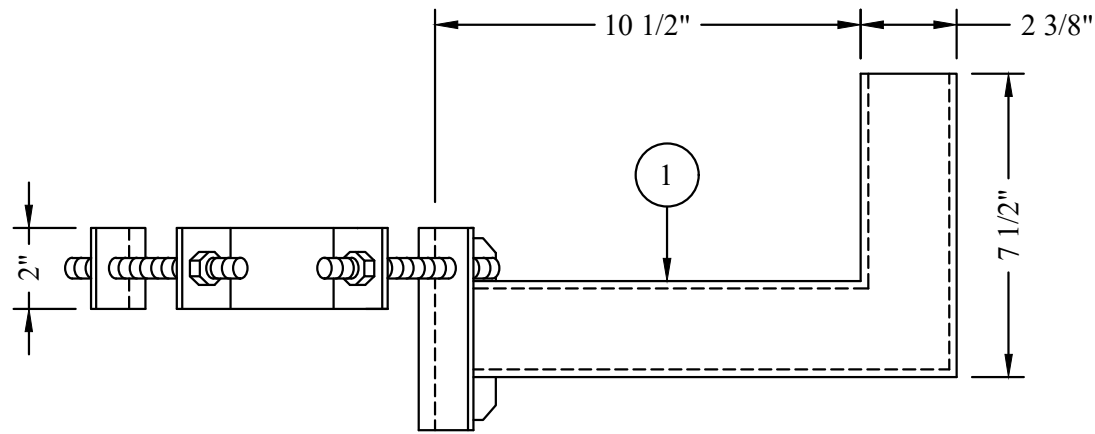
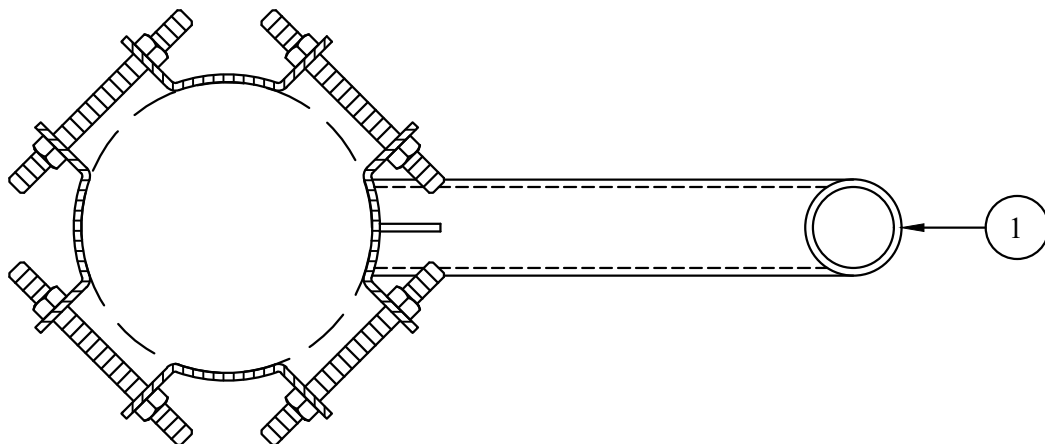
SINGLE POLE 60A
RELAY 1928-55-20



DOUBLE POLE 60A
RELAY 1928-55-25

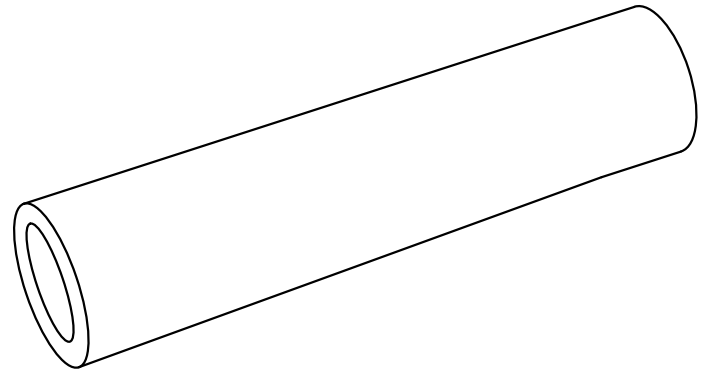


CU-REF	CU-ID	CU-DESCRIPTION
19285520	RELAY60A1P	RELAY 60 AMP 1 POLE
19285525	RELAY60A2P	RELAY 60 AMP 2 POLE



POLE MOUNT P/M
FLOODLIGHT
MOUNTING BRAKET
1928-60-05

CU-REF	CU-ID	CU-DESCRIPTION
19286005	BRKMTASSYFLOODLTWP	BRKT MOUNT ASSY FOR FLOOD LT WOOD POLE

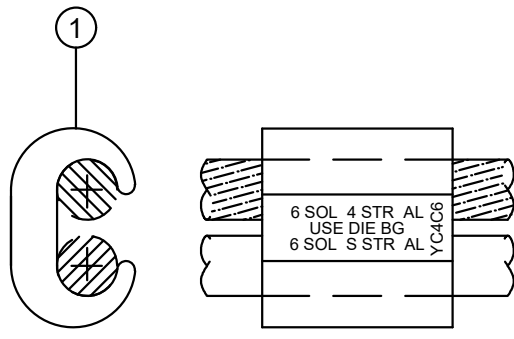


FLEX CONDUIT NON-METALIC WATER TIGHT
1928-65-15 1FT

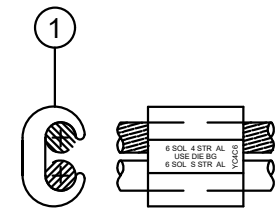
CU-REF	CU-ID	CU-DESCRIPTION
19286515	CONDFLEX3/4IN1000FTREEL	CONDUIT 3/4 IN FLEX WATER TIGHT 1000FT

REV_DATE:

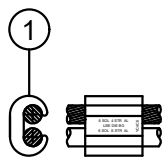
04/01/26



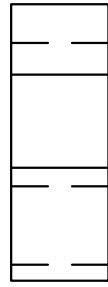
#4 TO #4 COMPRESSION
CLAMP AL
1928-70-01



#6 TO #6 COMPRESSION
CLAMP CU
1928-70-02



#10 TO #12 COMPRESSION
CLAMP CU
1928-70-03



#4 TO #12
COMPRESSION TAP
1928-70-04

CU-REF	CU-ID	CU-DESCRIPTION
19287001	CLMPCOMP4/4	CLAMP COMPRESSION #4 TO #4
19287002	CLPCOMPCU6/4	CLAMP COMPRESSION CU #6 TO #4
19287003	CLMPCOMPCU10/12	CLAMP COMPRESSION CU #10 TO #12
19287004	COMPTAP4/12	COMPRESSION TAP #4 TO #12