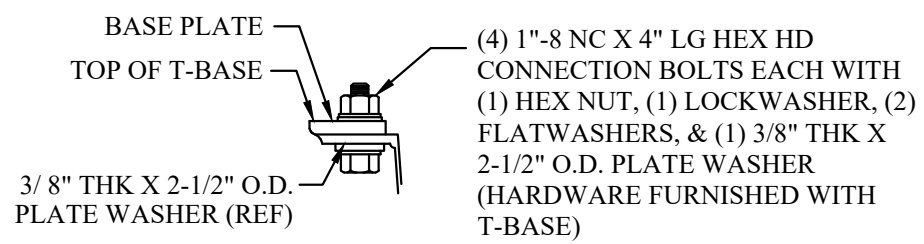
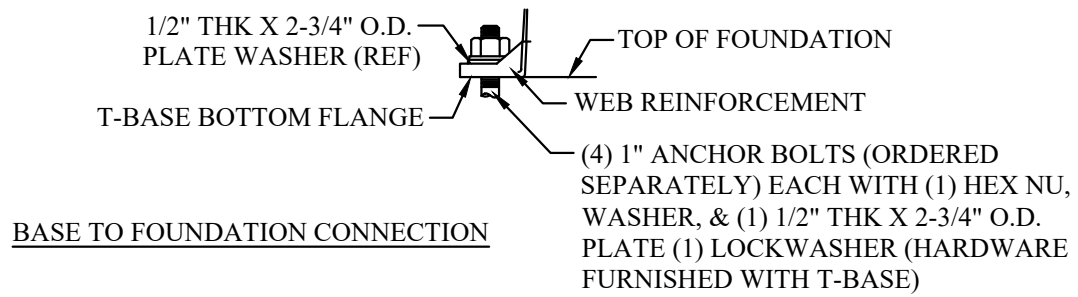
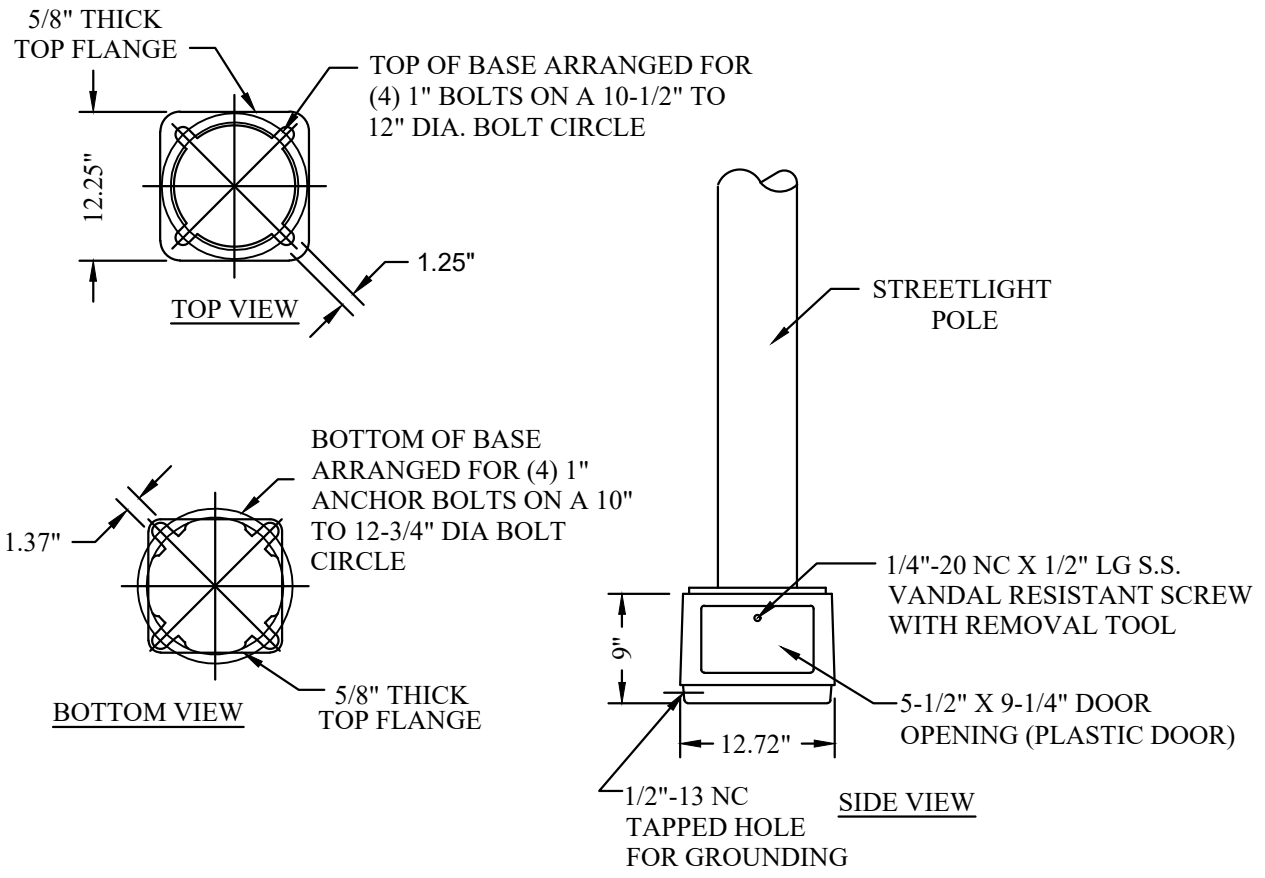


# 1918

## BREAKAWAYS AND FOUNDATIONS

### CONTAINS

- 1918-28 BREAKAWAY 25FT/30FT 9INCH TALL
- 1918-30 BREAKAWAY 25/30FT
- 1918-40 BREAKAWAY 35/45FT
- 1918-50 FOUNDATION 25/30FT
- 1918-51 FOUNDATION 35/45FT

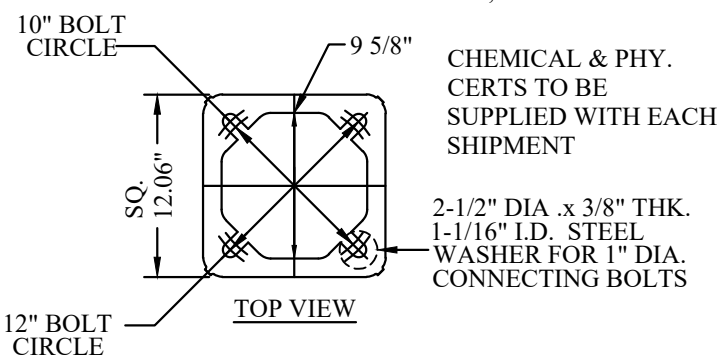


CU-REF	CU-ID	CU-DESCRIPTION
19182801	BRKAWYBS9INBLK25/30FTPOLE	BREAKAWAY BASE 9" TALL BLK FOR 25/30FT
19182803	BRKAWYBS9INBRN25/30FTPOLE	BREAKAWAY BASE 9" TALL BRN FOR 25/30FT

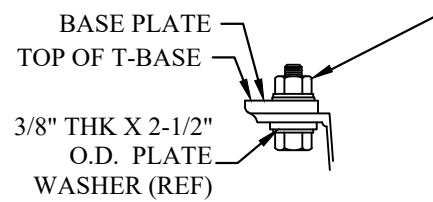
REV\_DATE:

04/01/26

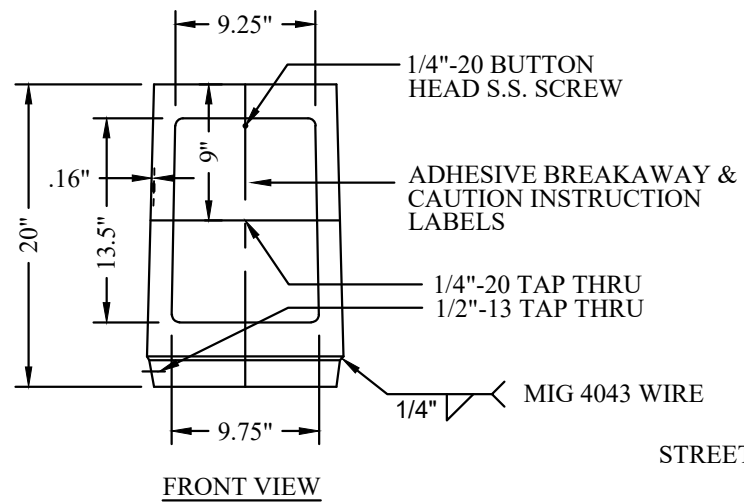
\*ALL WASHERS TO BE ZINC MECHANICAL COATED PER ASTM B 695-85, CLASS 50



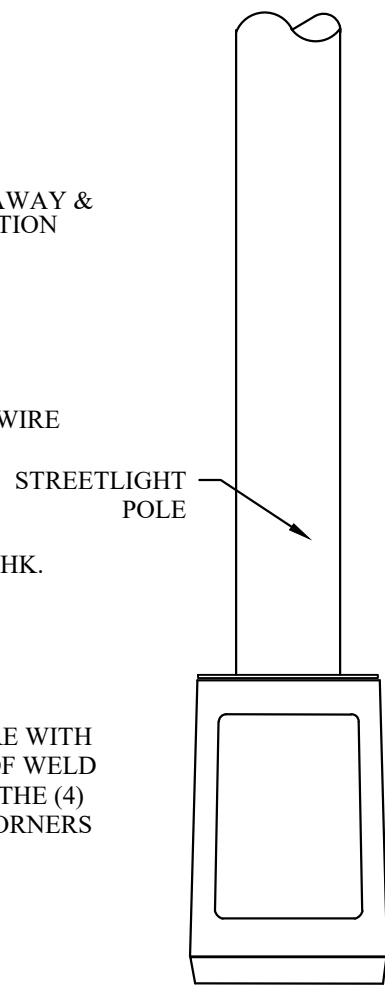
(4) 1"-8NC X 4" LG HEX HD CONNECTION BOLTS EACH WITH (1) HEX NUT, (1) LOCKWASHER, (2) FLAT WASHERS, & (1) 3/8" THK X 2-1/2" O.D. PLATE WASHER (HARDWARE FURNISHED WITH T-BASE)



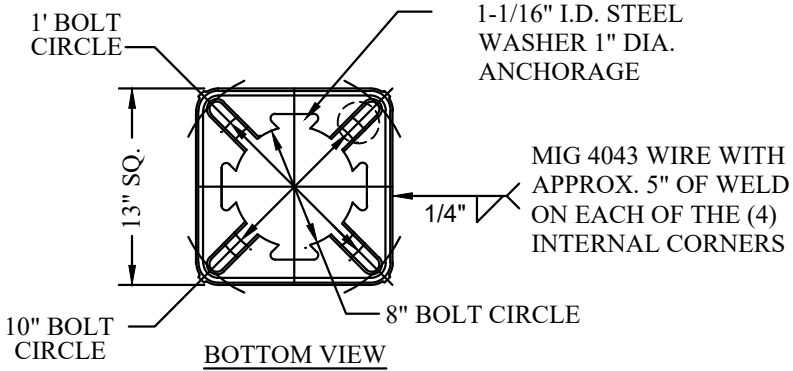
GROUND SCREW HOLE -INSTALL GROUNDING LUG IN GROUND SCREW HOLE.



POLE TO BASE CONNECTION



\* 2-3/4" DIA. x 1/2" THK. 1-1/16" I.D. STEEL WASHER 1" DIA. ANCHORAGE

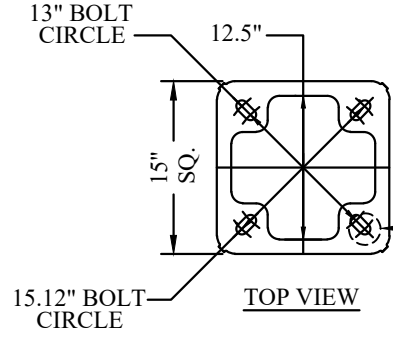


SMALL ALUMINUM BREAK-AWAY BASE

CU-REF	CU-ID	CU-DESCRIPTION
19183001	BRKAWYBS20INGRAY30FTPOLE	BREAKAWAY BASE 20 IN GRAY FOR 30FT POLE
19183002	BRKAWYBS20INBLK30FTPOLE	BREAKAWAY BASE 20 IN BLK FOR 30 FT POLE
19183003	BRKAWYBS20INBRN30FTPOLE	BREAKAWAY BASE 20 IN BRN FOR 30 FT POLE
19183004	BRKAWYBS20INGRN30FTPOLE	BREAKAWAY BASE 20 IN GRN FOR 30 FT POLE

REV\_DATE:  
04/01/26

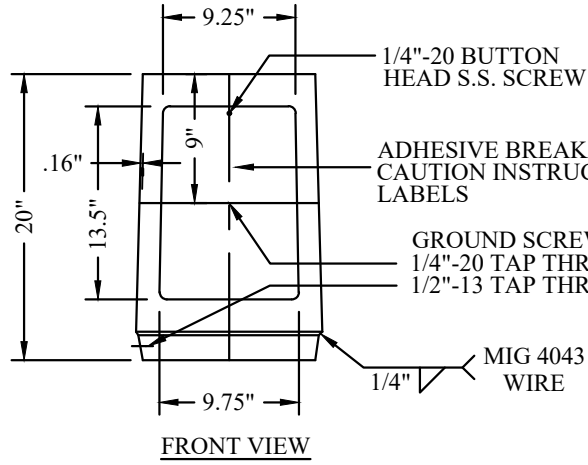
\* ALL WASHERS TO BE ZINC MECHANICAL COATED PER ASTM B 695-85, CLASS 50



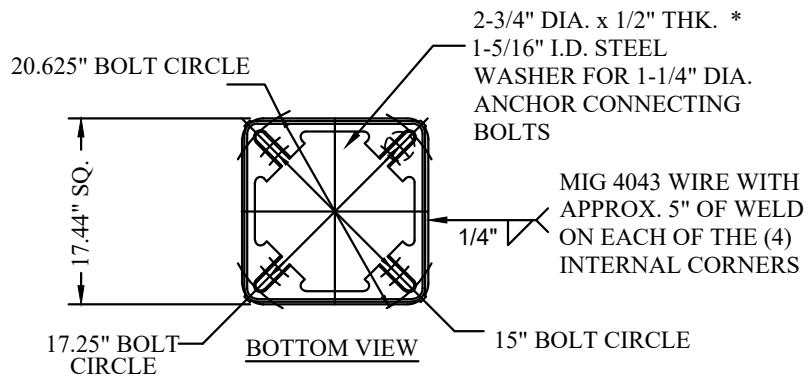
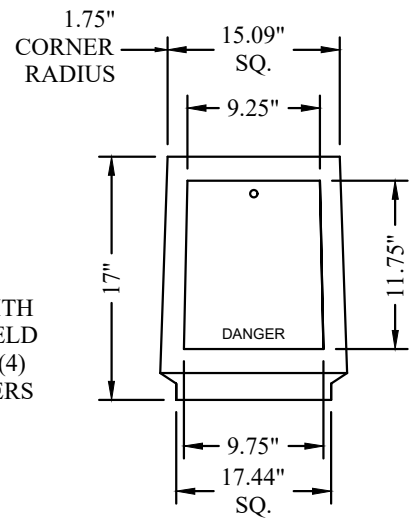
CHEMICAL & PHY. CERTS TO BE SUPPLIED WITH EACH SHIPMENT

2-3/4" DIA .x 1/2" THK. \* 1-5/16" I.D. STEEL WASHER FOR 1-1/4" DIA. CONNECTING BOLTS

OR 2-3/4" DIA .x 1/2" THK. 1-1/16" I.D. STEEL WASHER FOR 1" DIA. CONNECTING BOLTS



INSTALL GROUNDING LUG IN GROUND SCREW HOLE

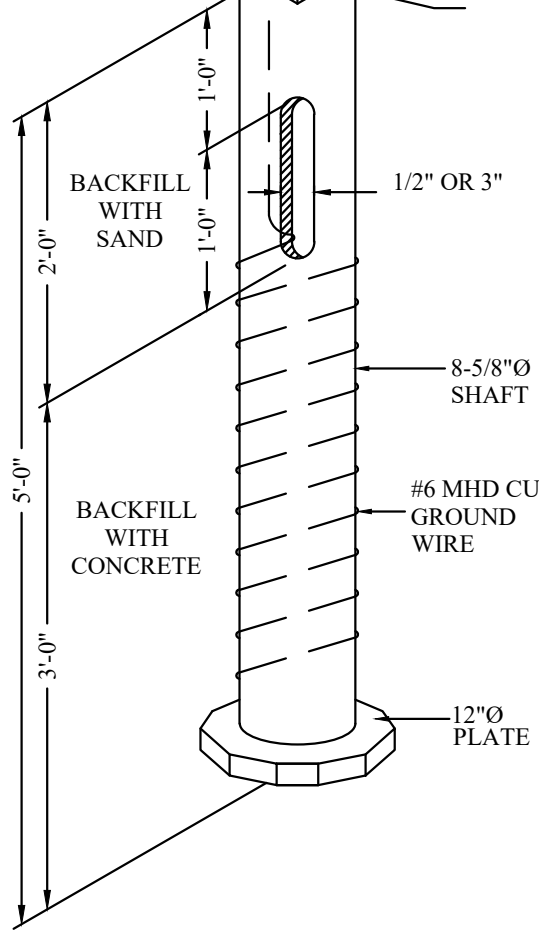
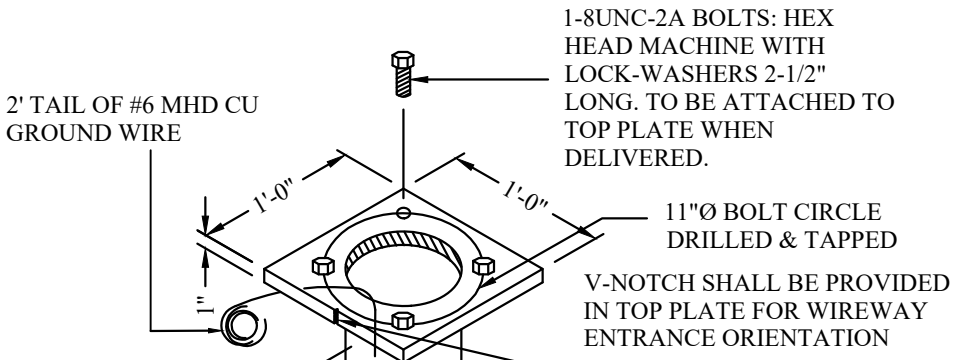


LARGE ALUMINUM BREAKAWAY BASE

LARGE ALUMINUM BREAKAWAY BASE

CU-REF	CU-ID	CU-DESCRIPTION
19184001	BRKAWYBS20INGRAY45FTPOLE	BREAKAWAY BASE 20 IN GRAY FOR 45 FT POLE
19184002	BRKAWYBS20INBLK45FTPOLE	BREAKAWAY BASE 20 IN BLK FOR 45 FT POLE
19184003	BRKAWYBS20INBRN45FTPOLE	BREAKAWAY BASE 20 IN BRN FOR 45 FT POLE
19184004	BRKAWYBS20INGRN45FTPOLE	BREAKAWAY BASE 20 IN GRN FOR 45 FT POLE

REV\_DATE:  
04/01/26



**SMALL STREETLIGHT FOUNDATION**  
(FOR 25'-30'-35' POLES)

NOTES:

1. MATERIAL: HOT DIP GALVANIZED STEEL.
2. ALL WELDED SEAMS SHALL BE CONTINUOUS.
3. BOLTS SHALL BE INSTALLED IN CONNECTION PLATE WITH BOLT HEAD UP.
4. FOUNDATION PIER MAY BE CIRCULAR OR OCTAGONAL.
5. CORE DRILL HOLES 18".
6. SET FOUNDATION BEHIND CURB PER CONSTRUCTION PRINT DETAIL.
7. SET TOP PLATE OF FOUNDATION 1/4" RISER FROM TOP OF CURB IN R.O.W.
8. INSTALL BELL ENDS FLUSH WITH TOP PLATE.
9. INSTALL CONCRETE AROUND BASE FROM BOTTOM OF CORE DRILL HOLE TO BOTTOM OF PIPE WINDOW. CONCRETE SHALL BE 5 SACK, CLASS A, 3/4" TO 1-1/2" AGGREGATE.
10. FILL INSIDE BASE WITH SAND TO TOP PLATE.
11. WRAP FOUNDATION WITH 25' OF #6 MHD SOLID COPPER. INSERT #6 THROUGH CONDUIT WINDOW AND LEAVE 24" ABOVE TOP PLATE OF FOUNDATION.

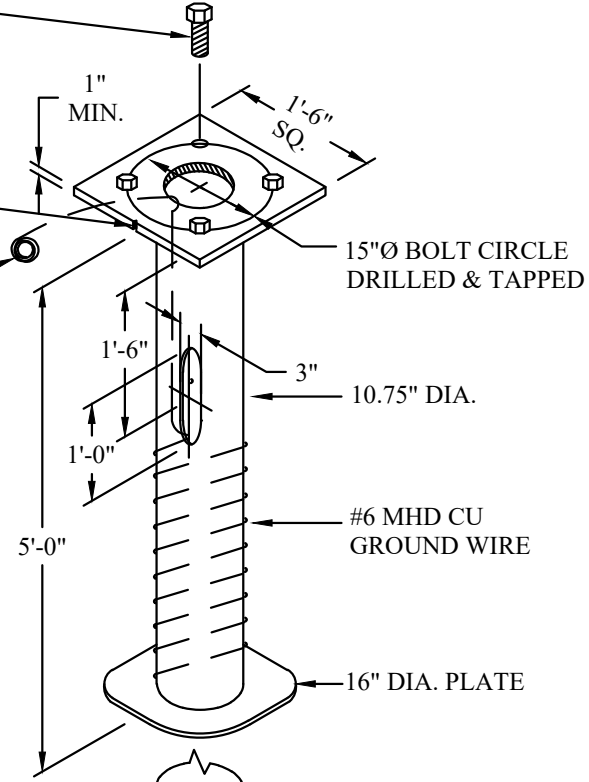
CU-REF	CU-ID	CU-DESCRIPTION
19185001A	FNDSTLPL25/30FTHDWA	FND STL POLE 25/30 FT HAND DIG EAST
19185001B	FNDSTLPL25/30FTHDW	FND STL POLE 25/30 FT HAND DIG WEST
19185001C	FNDSTLPL25/30FTMDE	FND STL POLE 25/30 FT MACHINEDIG EAST
19185001D	FNDSTLPL25/30FTMDW	FND STL POLE 25/30 FT MACHINEDIG WEST

REV\_DATE:  
04/01/26

1-1/4 IN -7UNC-2A BOLTS:  
HEX HEAD MACHINE WITH  
LOCK-WASHERS 3" LONG. TO  
BE ATTACHED TO TOP  
PLATE WHEN DELIVERED.

V-NOTCH SHALL BE  
PROVIDED IN TOP PLATE  
FOR WIREWAY  
ENTRANCE  
ORIENTATION

2' TAIL OF #6 CU  
MHD GROUND  
WIRE



**NOTES:**

1. MATERIAL: HOT DIP GALVANIZED STEEL.
2. ALL WELDED SEAMS SHALL BE CONTINUOUS.
3. BOLTS SHALL BE INSTALLED IN CONNECTION PLATE WITH BOLT HEAD UP.
4. FOUNDATION PIER MAY BE CIRCULAR OR OCTAGONAL.
5. CORE DRILL HOLES 18".
6. SET FOUNDATION BEHIND CURB PER CONSTRUCTION PRINT DETAIL.
7. SET TOP PLATE OF FOUNDATION 1/4" RISER FROM TOP OF CURB IN R.O.W.
8. INSTALL BELL ENDS FLUSH WITH TOP PLATE.
9. INSTALL CONCRETE AROUND BASE FROM BOTTOM OF CORE DRILL HOLE TO BOTTOM OF PIPE WINDOW.
10. FILL INSIDE BASE WITH SAND TO TOP PLATE.
11. WRAP FOUNDATION WITH 25' OF #6 MHD SOLID COPPER. INSERT #6 THROUGH CONDUIT WINDOW AND LEAVE 24" ABOVE TOP PLATE OF FOUNDATION.

ALTERNATE  
BASE PLATE  
DESIGNS

11 1/2" X 5 3/4" X 1/4" STEEL PLATE

16" DIA. HELIX 3" PITCH

LARGE STREETLIGHT FOUNDATION  
(FOR 45' POLES)

CU-REF	CU-ID	CU-DESCRIPTION
19185101A	FNDSTLPL35/45FTHTE	FND STL POLE 35/45 FT HAND DIG EAST
19185101B	FNDSTLPL35/45FTHDW	FND STL POLE 35/45 FT HAND DIG WEST
19185101C	FNDSTLPL35/45FTMDE	FND STL POLE 35/45 FT MACHINE DIG EAST
19185101D	FNDSTLPL35/45FTMDW	FND STL POLE 35/45 FT MACHINE DIG WEST