

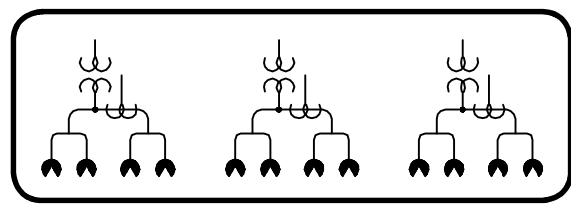
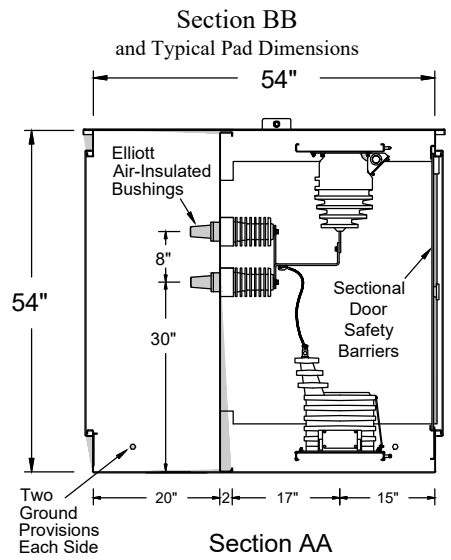
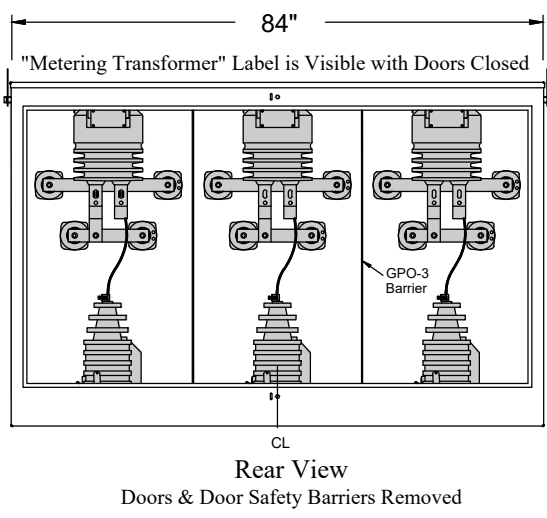
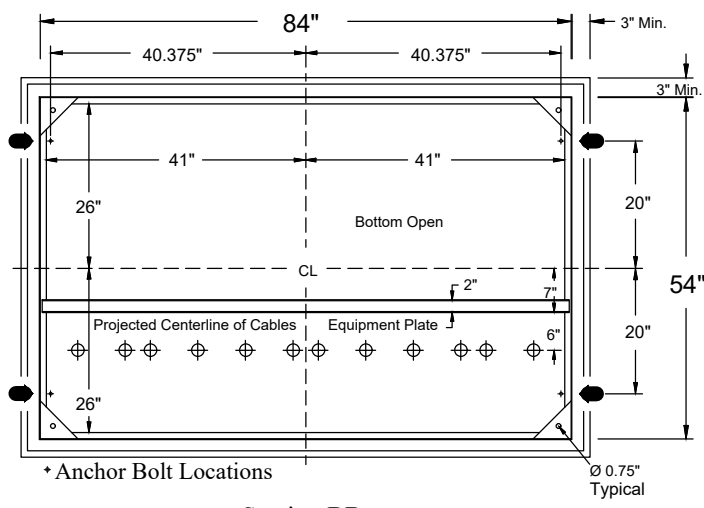
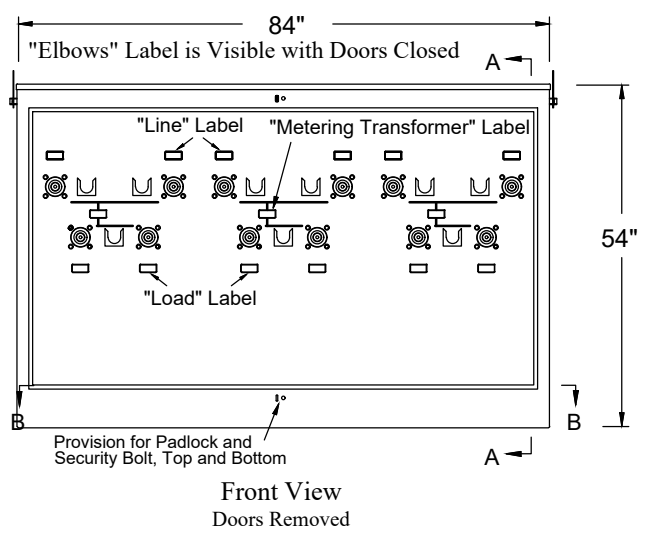
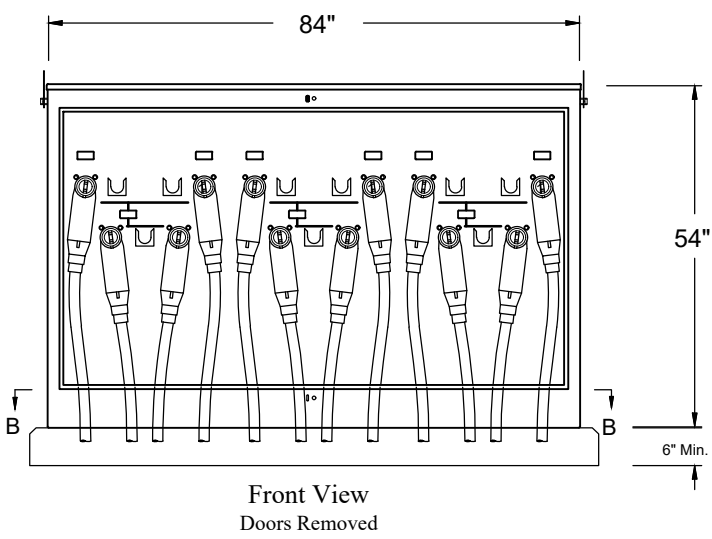
1568

PRIMARY METERING STATION

CONTAINS

1568-19 PRIMARY METERING STATION PG1

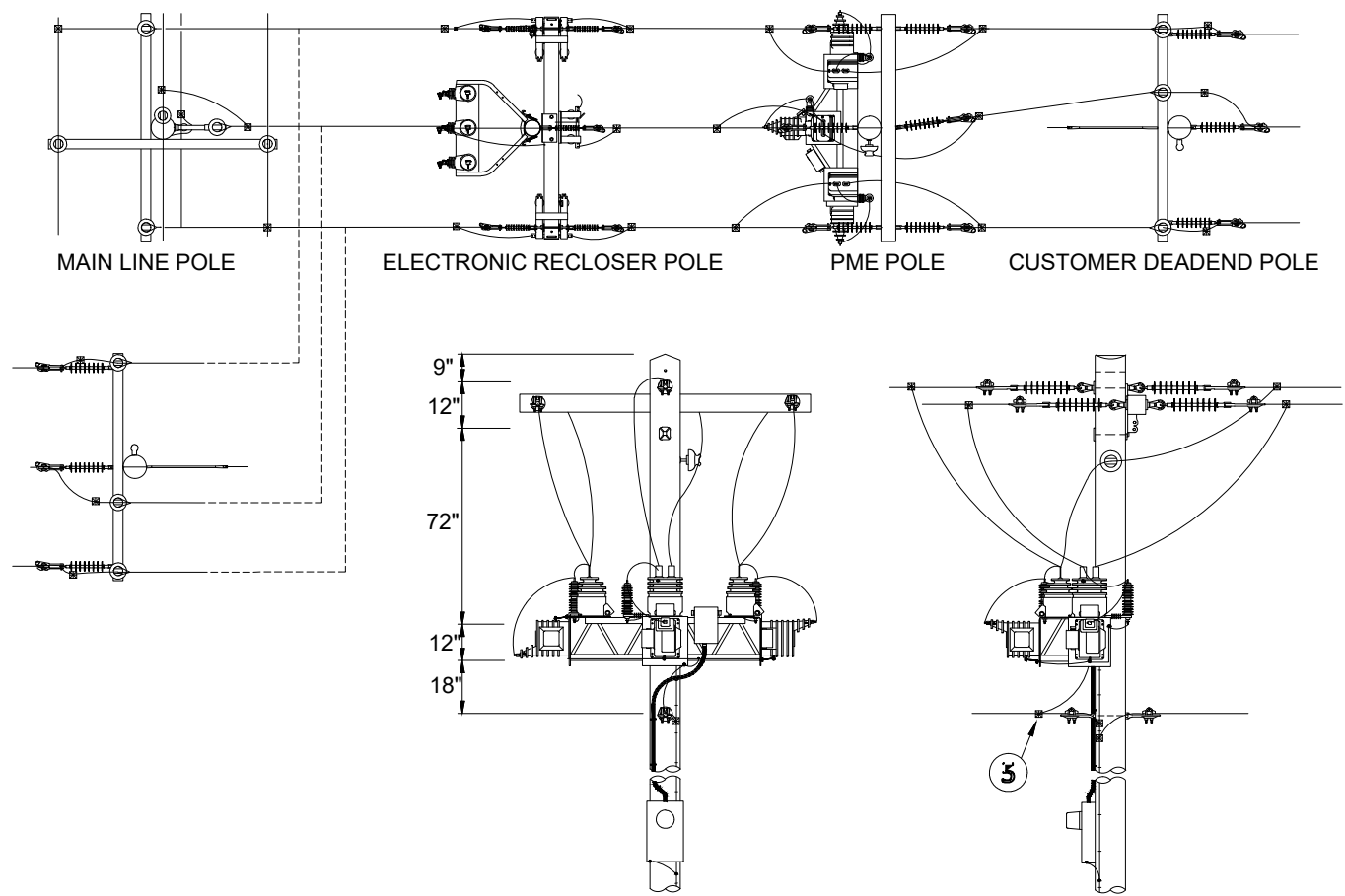
1568-20 OVERHEAD PRIMARY METERING RACK



Three Phase – Four Ways per Phase 600 Amp
 Elliott Air-Insulated Bushings
 NEMA Standard Outdoor Instrument Transformers
 8.3/14.4 kV Grounded Wye Max Design
 95 kV BIL

CU-REF	CU-ID	CU-DESCRIPTION
15681901	PRIMETSTA600A15KV	PRIMARY METERING STATION 600A 15KV
15681902	PRIMETSTA150A15KV	PRIMARY METERING STATION 150A 15KV
15681903	PRIMETSTA900A15KV	PRIMARY METERING STATION 900A 15KV

UNDERGROUND APPARATUS
PRIMARY METERING STATION
OVERHEAD PRIMARY METERING RACK



NOTES:

- A. Austin Energy must install PME pole separate from main line via slack span.
- B. Recloser pole to be installed directly between main line and PME pole.
- C. Maximum span length between any two poles is 50 feet.
- D. Customer must properly deadend and guy their pole.
- E. Customer must match Austin Energy's construction framing and pole height.
- F. Customer must provide sufficient length conductor to be slacked to PME pole.
- G. Customer must provide required connectors to be attached to deadend insulators on PME pole.
- H. Austin Energy will attach customer conductor to PME pole.
- I. Meter base shall be installed according to company guidelines and oriented such that it has safe and easy accessibility.

CU-REF	CU-ID	CU-DESCRIPTION
15682001	PRIMETOHRACK	OVERHEAD PRIMARY METERING RACK 15KV