

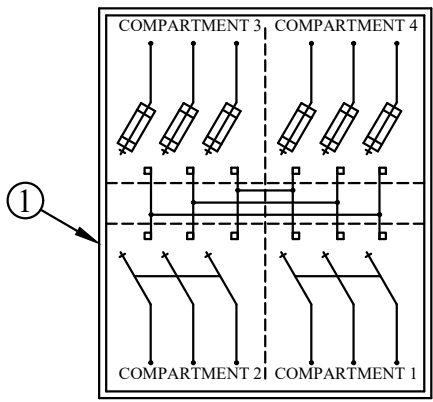
1561

SWITCHGEAR

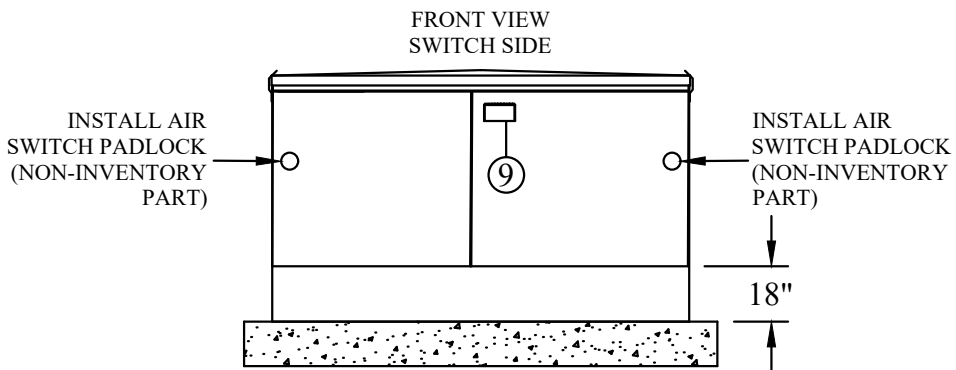
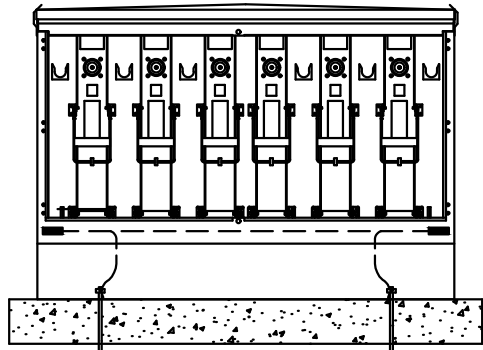
CONTAINS

- 1561-09 PADMOUNT 3PH PME-9
- 1561-10 PADMOUNT 3PH PME-10
- 1561-11 PADMOUNT 3PH PME-11
- 1561-12 PADMOUNT 3PH PME-12
- 1561-15 PADMOUNT VISTA 321
- 1561-16 PADMOUNT VISTA 422
- 1561-17 PADMOUNT VISTA 440
- 1561-18 PADMOUNT VISTA 624
- 1561-19 PADMOUNT VISTA 633
- 1561-20 PADMOUNT VISTA 615
- 1561-22 PADMOUNT VISTA W/ REMOTE SUPV./MOTOR OP.
- 1561-24 PADMOUNT PME-6 ATO
- 1561-25 PADMOUNT PME-9 ATO
- 1561-26 PADMOUNT DOUBLE TANK ATO
- 1561-29 PADMOUNT PME-9
- 1561-30 PADMOUNT PME-10
- 1561-31 PADMOUNT PME-11
- 1561-32 PADMOUNT PME-12
- 1561-37 PADMOUNT VISTA 321
- 1561-38 PADMOUNT VISTA 422 & 440
- 1561-39 PADMOUNT VISTA 624 & 633

UNDERGROUND APPARATUS
 SWITCHGEAR
 PADMOUNT 3PH PME-9



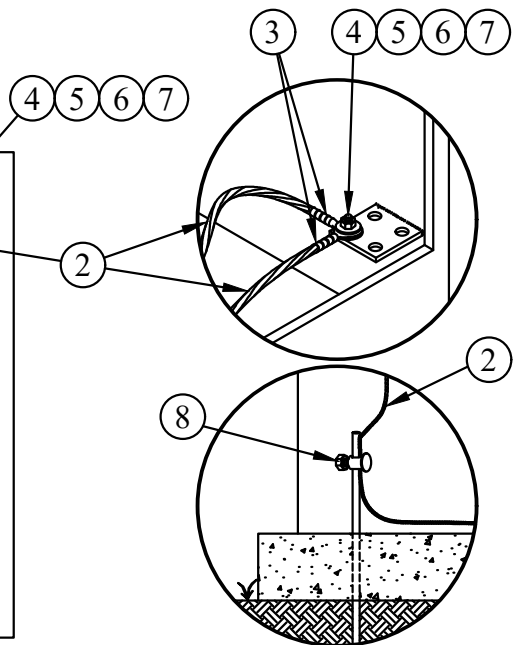
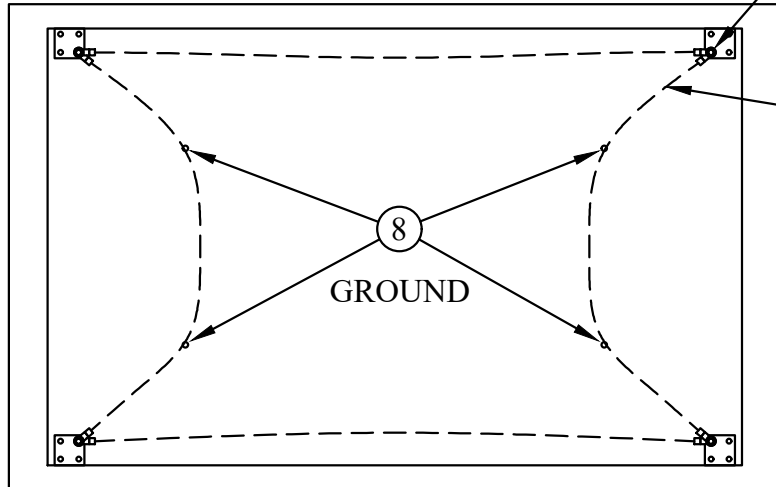
FUSE SIDE
 (DOOR REMOVED)



FRONT VIEW
 SWITCH SIDE
 SWITCH SIDE
 (DOOR REMOVED)

1561-0901

PAD-MOUNTED SWITCHGEARS ARE A CONVENIENT METHOD TO SECTIONALIZE UNDERGROUND FEEDERS AND FEEDER LATERALS AND PROVIDE FOR URD CIRCUIT TAP POINTS TO SERVE LARGE UNDERGROUND COMMERCIAL AND RESIDENTIAL AREAS. BEFORE USING PAD-MOUNTED SWITCHGEARS, COMPARE THEIR COST TO LOADBREAK ELBOWS OR OTHER MEANS OF TAPPING UNDERGROUND CIRCUITS.

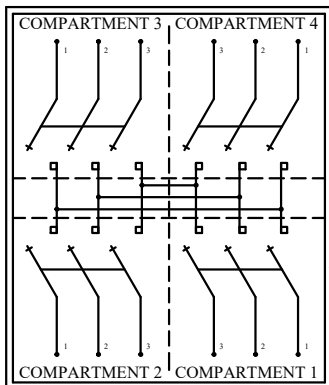


CU-REF	CU-ID	CU-DESCRIPTION
15610901	SWGPM3PHPME9DF	SWITCHGEAR PAD MOUNT 3PH PME- 9 DF

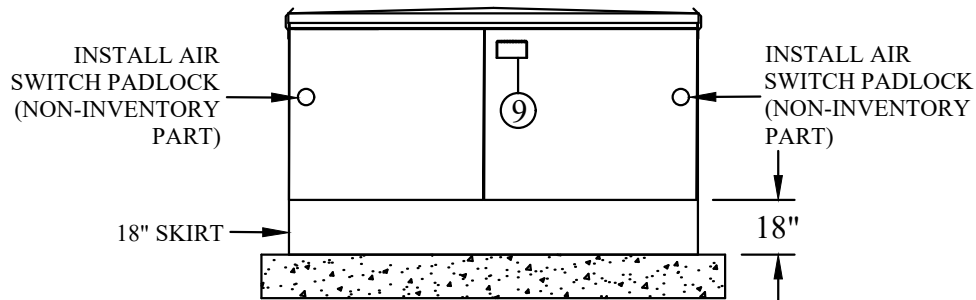
REV_DATE:

04/01/26

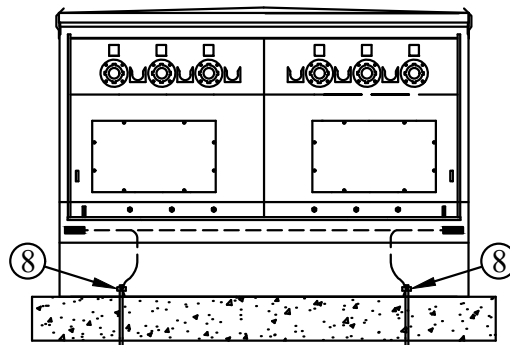
PME-10
CIRCUIT CONFIGURATION



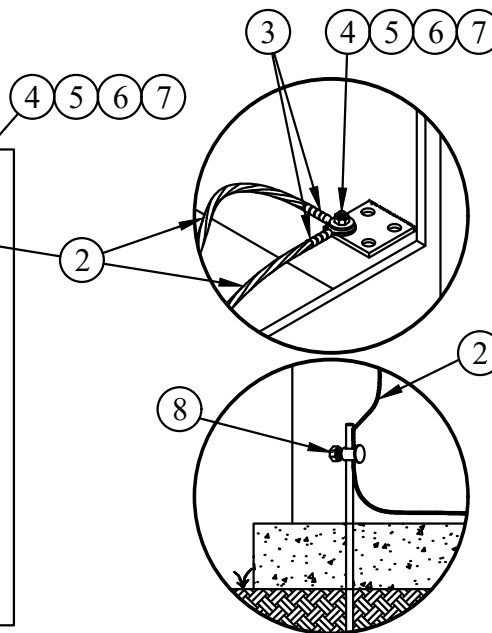
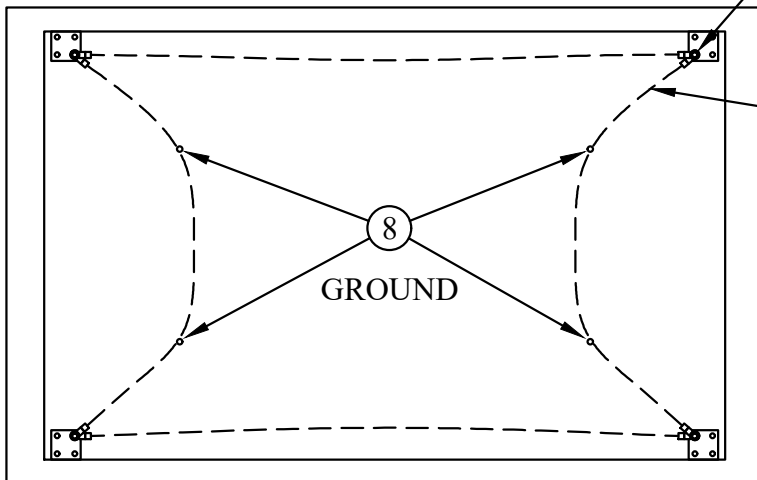
FRONT VIEW
SWITCH SIDE



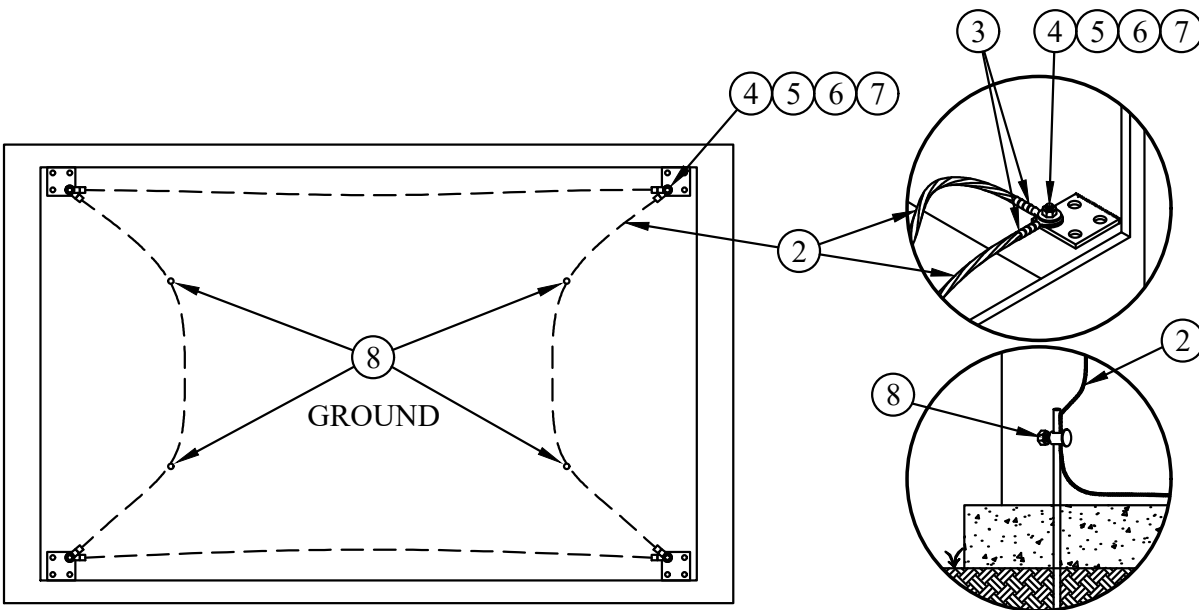
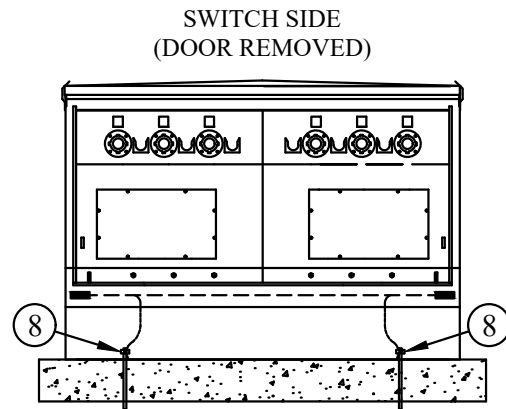
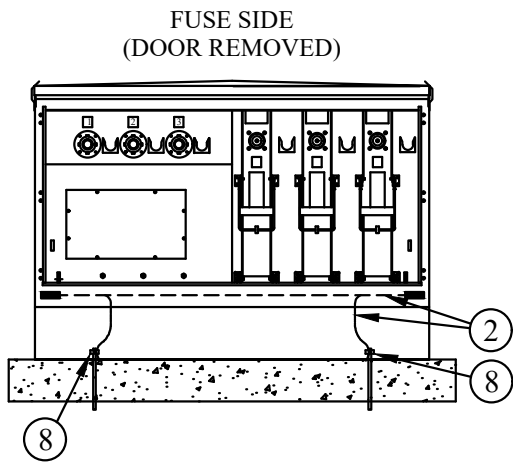
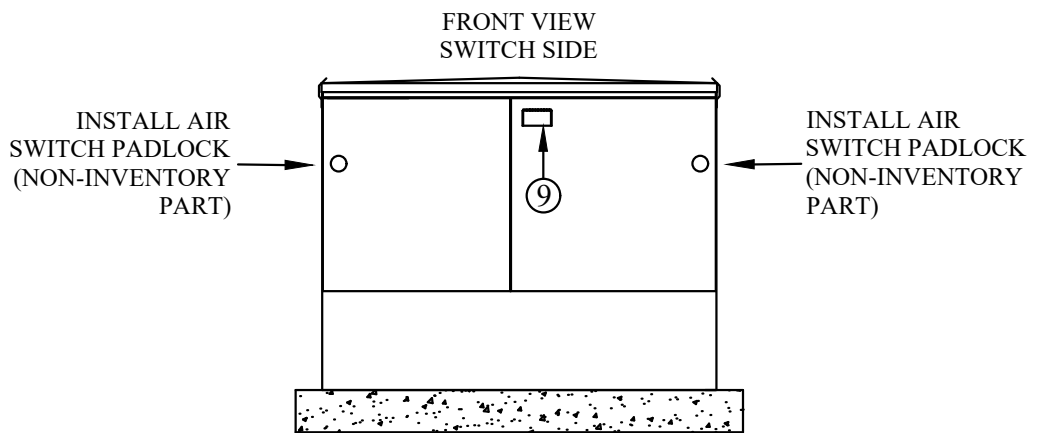
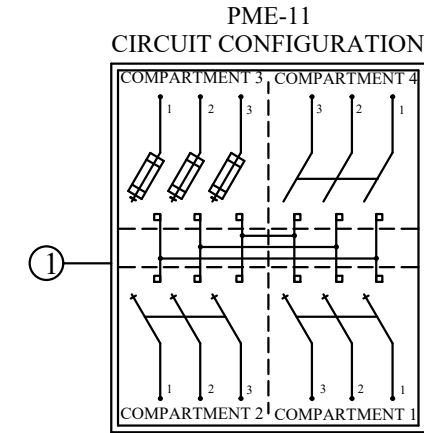
SWITCH SIDE
(DOOR REMOVED)



1561-1001

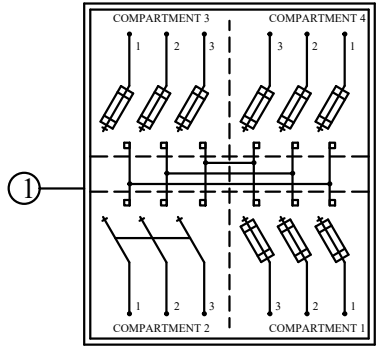


CU-REF	CU-ID	CU-DESCRIPTION
15611001	SWGPM3PHPME10DF	SWITCHGEAR PAD MOUNT 3PH PME- 10 DF



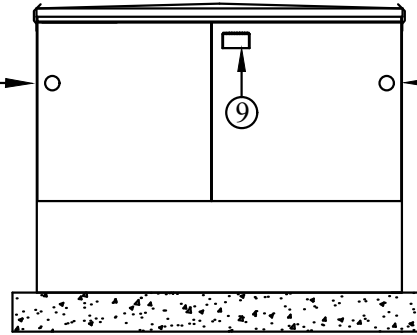
CU-REF	CU-ID	CU-DESCRIPTION
15611101	SWGPM3PHPME11DF	SWITCHGEAR PAD MOUNT 3PH PME- 11 DF

PME-12
CIRCUIT CONFIGURATION



INSTALL AIR SWITCH PADLOCK (NON-INVENTORY PART)

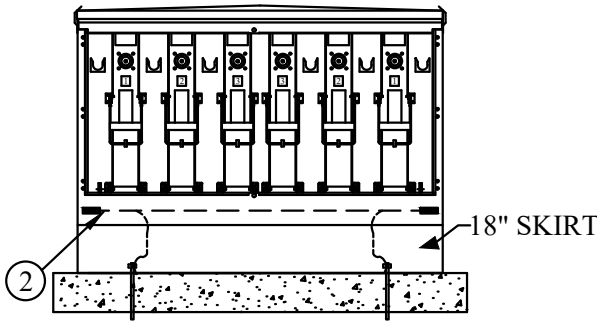
FRONT VIEW
SWITCH SIDE



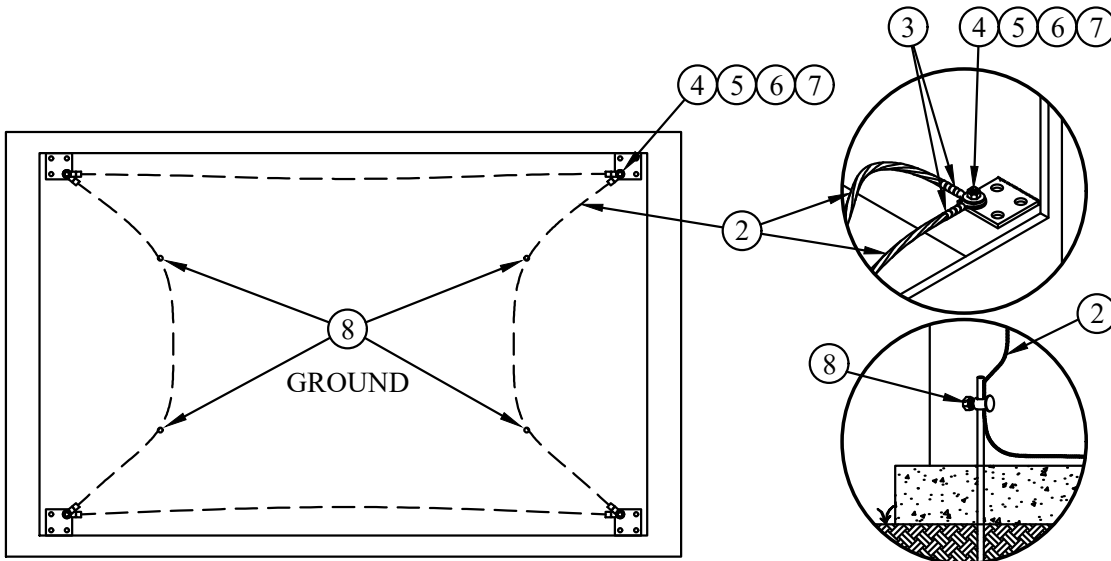
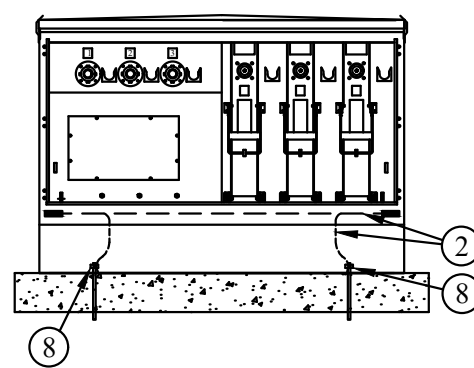
INSTALL AIR SWITCH PADLOCK (NON-INVENTORY PART)

1561-12-01

FUSE SIDE
(DOOR REMOVED)

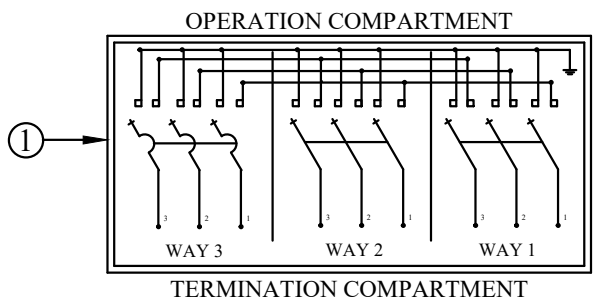


SWITCH SIDE
(DOOR REMOVED)



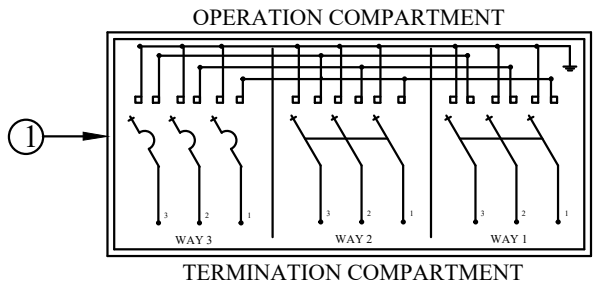
CU-REF	CU-ID	CU-DESCRIPTION
15611201	SWGPM3PHPME12DF	SWITCHGEAR PAD MOUNT 3PH PME- 12 DF

UNDERGROUND APPARATUS
 SWITCHGEAR
 PADMOUNT VISTA 321



VISTA MODEL 321 WITH 3PH OPERATION CIRCUIT CONFIGURATION (OVERHEAD VIEW)

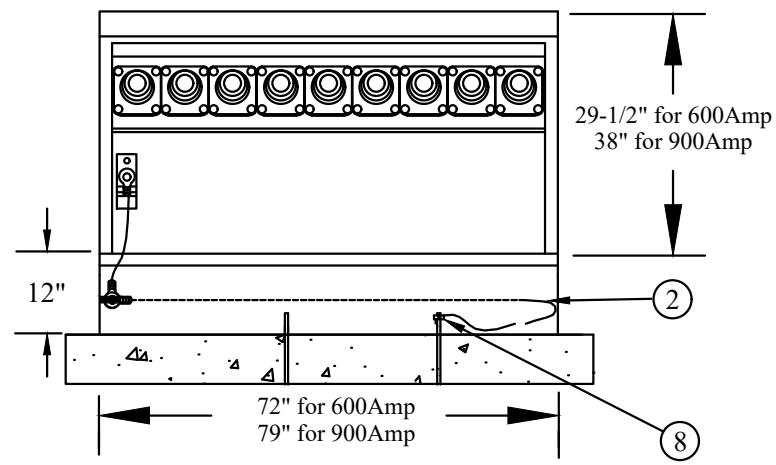
- 1561-15-01
 600 Amp Vista 321
 (2) 3 Phase 600A Switch Ways
 (1) 3 Phase 600A Fault Interrupter Way
- 1561-15-02
 900 Amp Vista 321
 (2) 3 900A Phase Switch Ways
 (1) 3 Phase 600A Fault Interrupter Way



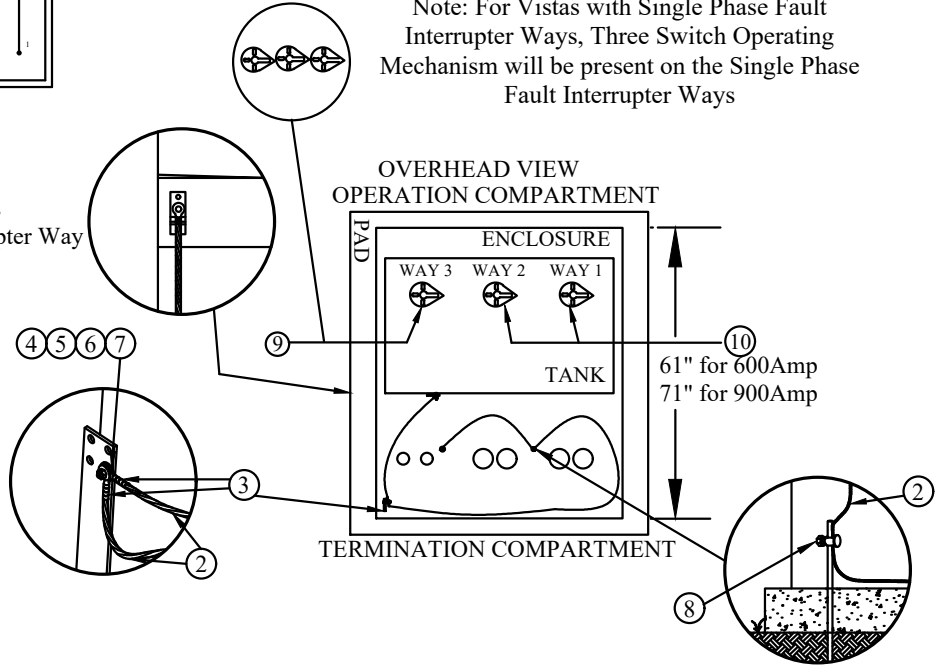
VISTA MODEL 321 WITH 1PH & 3PH OPERATION CIRCUIT CONFIGURATION (OVERHEAD VIEW)

- 1561-15-03
 900 Amp Vista 321
 (2) 3 Phase 900A Switch Ways
 (1) 1 Phase 200A Fault Interrupter Way

FRONT VIEW
 TERMINATION COMPARTMENT



Note: For Vistas with Single Phase Fault Interrupter Ways, Three Switch Operating Mechanism will be present on the Single Phase Fault Interrupter Ways

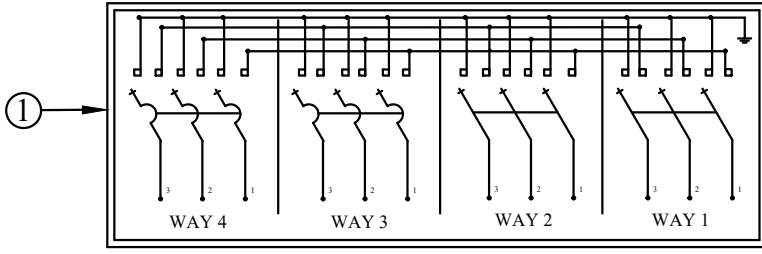


NOTE: ANY PRIMARY BUSHING NOT BEING UTILIZED SHALL HAVE AN INSULATED PROTECTIVE CAP INSTALLED. PROTECTIVE CAP CU TO BE USED IS 'CAPINSULW/TESTPOINT" (AE PART #15573). QTY OF CAPS TO BE DETERMINED BY APPLICATION. ALL FAULT INTERRUPTER OPERATING MECHANISMS NOT BEING UTILIZED SHALL BE LOCKED IN THE GROUND POSITION.

CU-REF	CU-ID	CU-DESCRIPTION
15611501	SWGPM2-600FI321	SWITCHGEAR VISTA 600 AMP MODEL 321
15611502	SWGPM2-900LDS1-600FI321	SWITCHGEAR VISTA 900 AMP MODEL 321
15611503	SWG VISTA321-W/(1)1PHFI	SWITCHGEAR VISTA 321 WITH (1) 1PH FI

UNDERGROUND APPARATUS
SWITCHGEAR
PADMOUNT VISTA 422

OPERATION COMPARTMENT

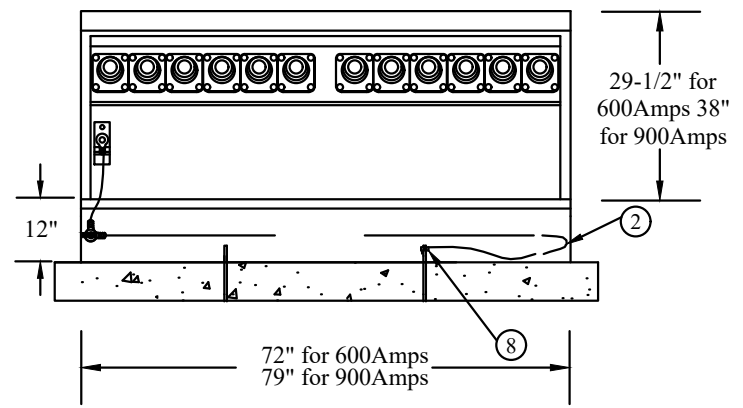


TERMINATION COMPARTMENT

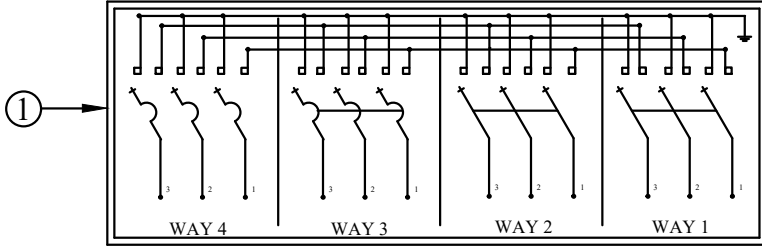
VISTA MODEL 422 WITH 3PH OPERATION CIRCUIT CONFIGURATION (OVERHEAD VIEW)

- 1561-16-01
600 Amp Vista 422
(2) 3 Phase 600A Switch Ways
(2) 3 Phase 600A Fault Interrupter Ways
- 1561-16-02
900 Amp Vista 422
(2) 3 Phase 900A Switch Ways
(2) 3 Phase 600A Fault Interrupter Ways

FRONT VIEW
TERMINATION COMPARTMENT



OPERATION COMPARTMENT



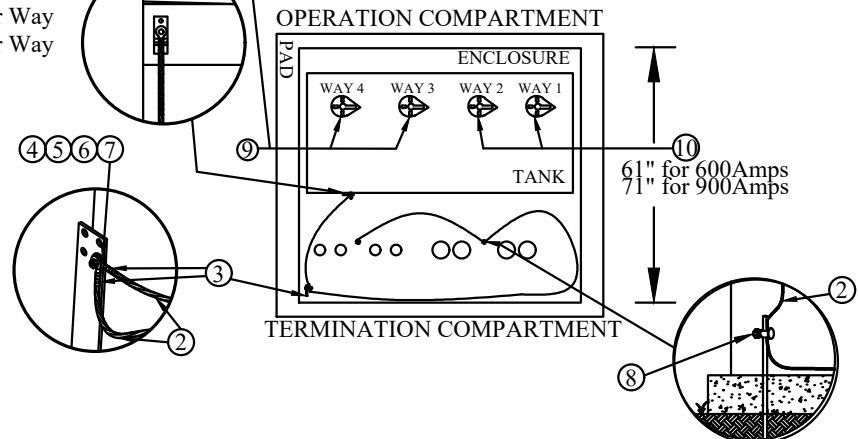
TERMINATION COMPARTMENT

VISTA MODEL 422 WITH 1PH & 3PH OPERATION CIRCUIT CONFIGURATION (OVERHEAD VIEW)

- 1561-16-03
900 Amp Vista 422
(2) 3 Phase 900A Switch Ways
(1) 3 Phase 600A Fault Interrupter Way
(1) 1 Phase 200A Fault Interrupter Way

Note: For Vistas with Single Phase Fault Interrupter Ways, Three Switch Operating Mechanism will be present on the Single Phase Fault Interrupter Ways

OVERHEAD VIEW

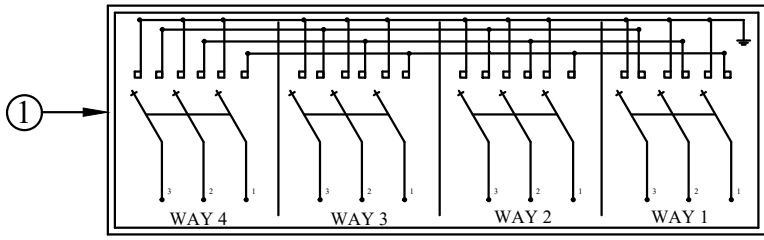


NOTE: ANY PRIMARY BUSHING NOT BEING UTILIZED SHALL HAVE AN INSULATED PROTECTIVE CAP INSTALLED. PROTECTIVE CAP CU TO BE USED IS "CAPINSULW/TESTPOINT" (AE PART #15573). QTY OF CAPS TO BE DETERMINED BY APPLICATION. ALL FAULT INTERRUPTER OPERATING MECHANISMS NOT BEING UTILIZED SHALL BE LOCKED IN THE GROUND POSITION.

CU-REF	CU-ID	CU-DESCRIPTION
15611601	SWGPM2-600LDS2-600FI422	SWITCHGEAR VISTA 600 AMP MODEL 422
15611602	SWGPM2-900LDS2-600FI422	SWITCHGEAR VISTA 900 AMP MODEL 422
15611603	SWG VISTA422-W/(1)1PHFI	SWITCHGEAR VISTA 422 WITH (1) 1PH FI

REV_DATE:
04/01/26

OPERATION COMPARTMENT

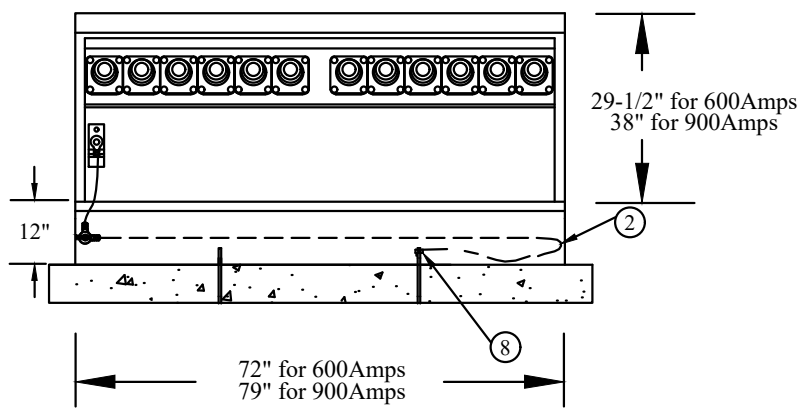


TERMINATION COMPARTMENT

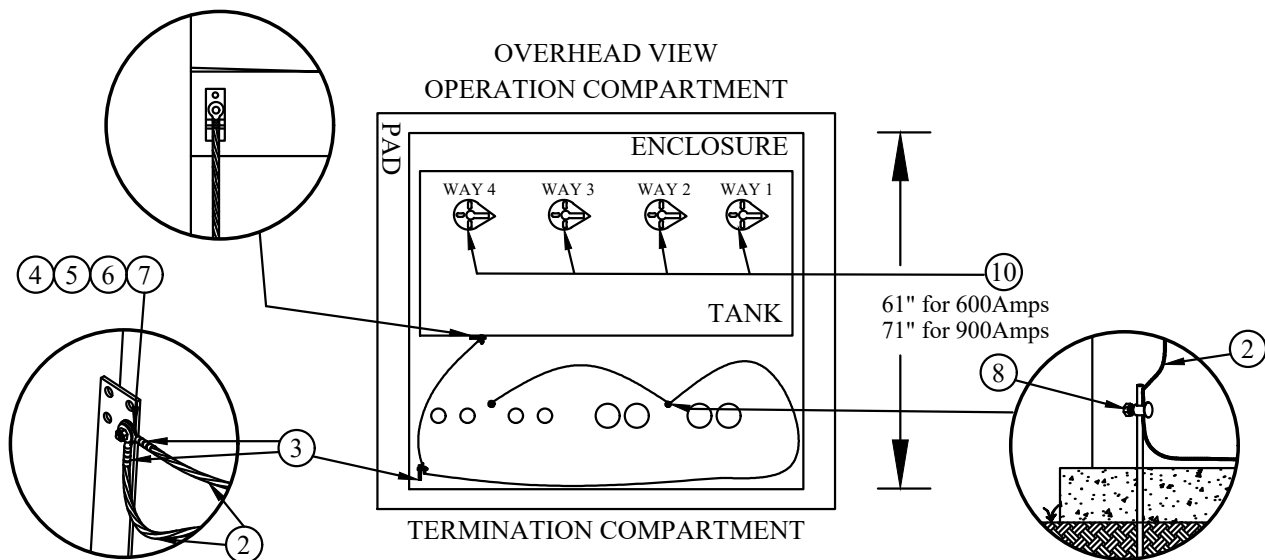
VISTA MODEL 440 WITH
3PH OPERATION
CIRCUIT
CONFIGURATION
(OVERHEAD VIEW)

- 1561-17-01
600 Amp Vista 440
(4) 3 Phase 600A Switch Ways
- 1561-17-02
900 Amp Vista 440
(4) 3 Phase 900A Switch Ways

FRONT VIEW
TERMINATION COMPARTMENT



OVERHEAD VIEW
OPERATION COMPARTMENT

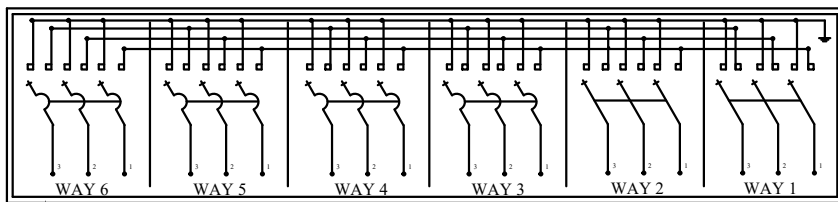


NOTE: ANY PRIMARY BUSHING NOT BEING UTILIZED SHALL HAVE AN INSULATED PROTECTIVE CAP INSTALLED. PROTECTIVE CAP CU TO BE USED IS "CAPINSULW/TESTPOINT" (AE PART #15573). QTY OF CAPS TO BE DETERMINED BY APPLICATION.
ALL FAULT INTERRUPTER OPERATING MECHANISMS NOT BEING UTILIZED SHALL BE LOCKED IN THE GROUND POSITION.

CU-REF	CU-ID	CU-DESCRIPTION
15611701	SWGPM4-600LDS0-600FI440	SWITCHGEAR VISTA 600 AMP MODEL 440
15611702	SWGPM4-900LDS0-600FI440	SWITCHGEAR VISTA 900 AMP MODEL 440

**UNDERGROUND APPARATUS
SWITCHGEAR
PADMOUNT VISTA 624**

OPERATION COMPARTMENT

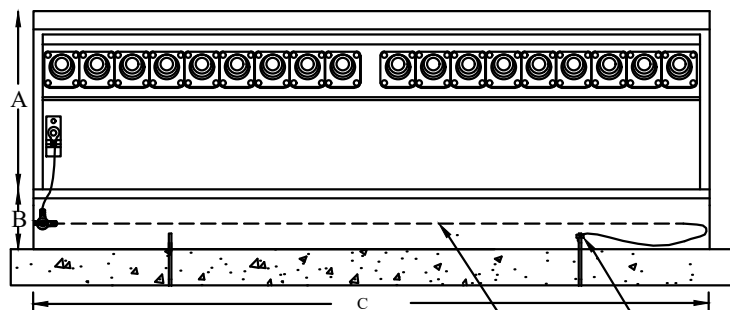


TERMINATION COMPARTMENT

VISTA MODEL 624 WITH
3PH OPERATION
CIRCUIT
CONFIGURATION
(OVERHEAD VIEW)

- 1561-18-01
600 Amp Vista 624
(2) 3 Phase 600A Switch Ways
(4) 3 Phase 600A F.I. Ways
- 1561-18-02
900 Amp Vista 624
(2) 3 Phase 900A Switch Ways
(4) 3 Phase 600A F.I. Ways

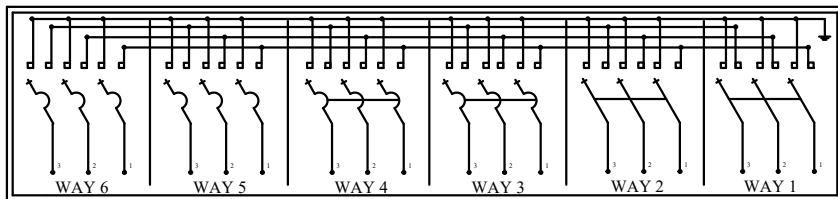
**FRONT VIEW TERMINATION
COMPARTMENT**



DIMENSIONS

- A - 29.5" FOR 600A; 38" FOR 900A
- B - 12"
- C - 102"
- D - 61" FOR 600A; 71" FOR 900A (BELOW)

OPERATION COMPARTMENT



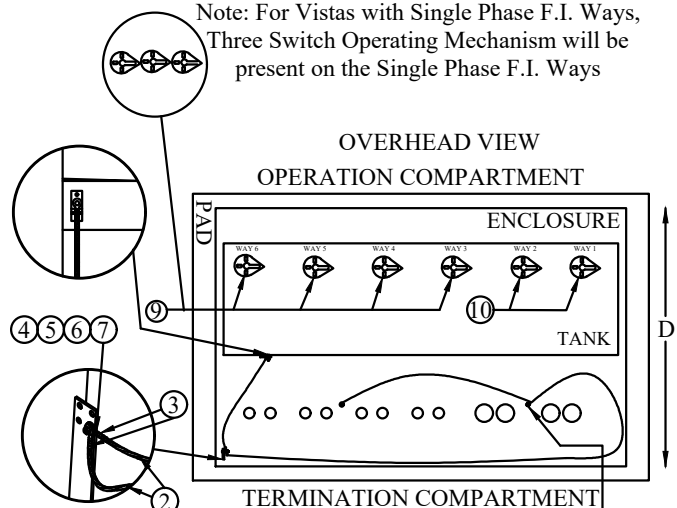
TERMINATION COMPARTMENT

VISTA MODEL 624 WITH
1PH & 3PH OPERATION
CIRCUIT
CONFIGURATION
(OVERHEAD VIEW)

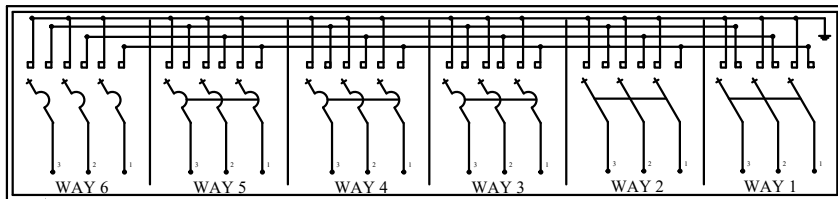
- 1561-18-03
900 Amp Vista 624
(2) 3 Phase 900A Switch Ways
(2) 3 Phase 600A F.I. Ways
(2) 1 Phase 200A F.I. Ways

Note: For Vistas with Single Phase F.I. Ways,
Three Switch Operating Mechanism will be
present on the Single Phase F.I. Ways

**OVERHEAD VIEW
OPERATION COMPARTMENT**



OPERATION COMPARTMENT



TERMINATION COMPARTMENT

VISTA MODEL 624 WITH
1PH & 3PH OPERATION
CIRCUIT
CONFIGURATION
(OVERHEAD VIEW)

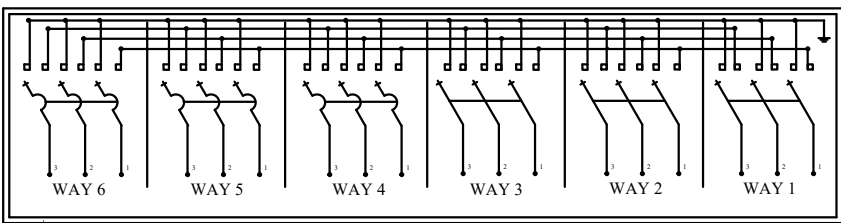
- 1561-18-04
900 Amp Vista 624
(2) 3 Phase 900A Switch Ways
(3) 3 Phase 600A F.I. Ways
(1) 1 Phase 200A F.I. Way

NOTE: ANY PRIMARY BUSHING NOT BEING UTILIZED SHALL HAVE AN INSULATED PROTECTIVE CAP INSTALLED. PROTECTIVE CAP CU TO BE USED IS 'CAPINSULW/TESTPOINT" (AE PART #15573). QTY OF CAPS TO BE DETERMINED BY APPLICATION. ALL FAULT INTERRUPTER OPERATING MECHANISMS NOT BEING UTILIZED SHALL BE LOCKED IN THE GROUND POSITION.

CU-REF	CU-ID	CU-DESCRIPTION
15611801	SWGPM2-600LDS2-600FI422	SWITCHGEAR VISTA 600 AMP MODEL 624
15611802	SWGPM2-900LDS2-600FI422	SWITCHGEAR VISTA 900 AMP MODEL 624
15611803	SWGVISTA422-W/(1)1PHFI	SWITCHGEAR VISTA 624 WITH (2) 1PH FI
15611804	SWGVISTA624-W/(1)1PHFI	SWITCHGEAR VISTA 624 WITH (1) 1PH FI

REV_DATE:
04/01/26

OPERATION COMPARTMENT

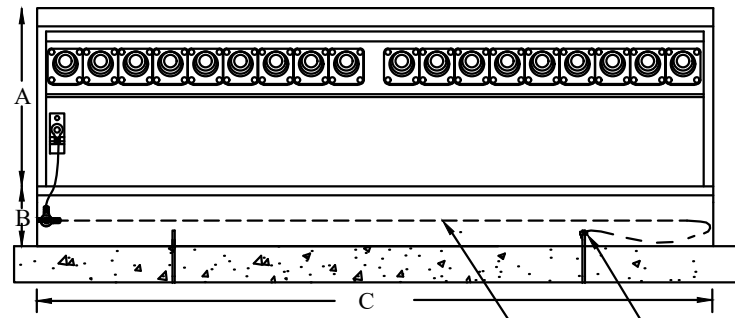


TERMINATION COMPARTMENT

①
VISTA MODEL 633 WITH 3PH OPERATION CIRCUIT CONFIGURATION (OVERHEAD VIEW)

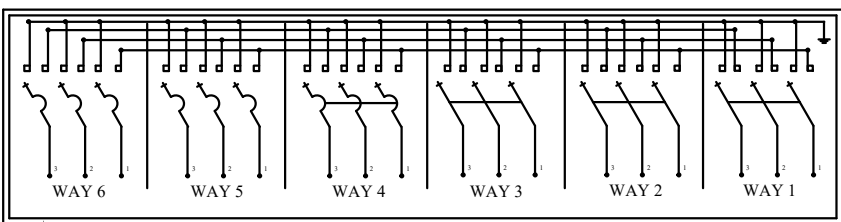
- 1561-19-01
- 600 Amp Vista 633
- (3) 3 Phase 600A Switch Ways
- (3) 3 Phase 600A Fault Interrupter Ways
- 1561-19-02
- 900 Amp Vista 633
- (3) 3 Phase 900A Switch Ways
- (3) 3 Phase 600A Fault Interrupter Ways

FRONT VIEW TERMINATION COMPARTMENT



DIMENSIONS
A - 29.5" FOR 600A; 38" FOR 900A
B - 12"
C - 102"
D - 61" FOR 600A; 71" FOR 900A (BELOW)

OPERATION COMPARTMENT



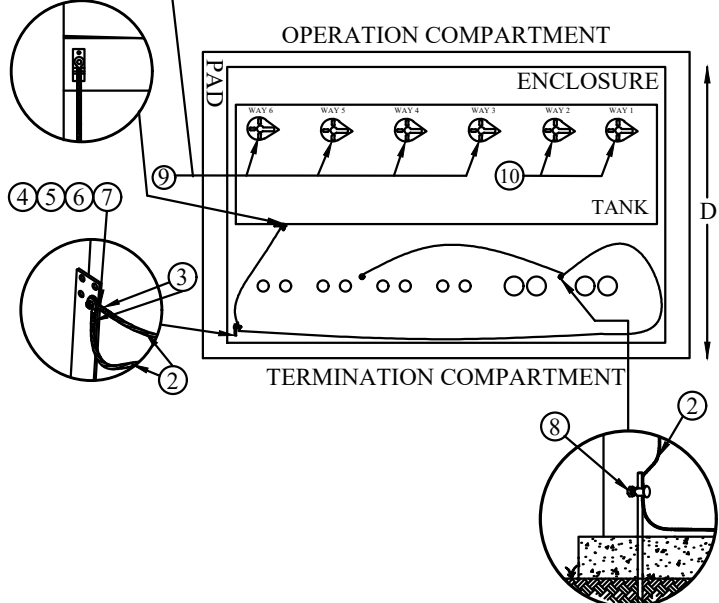
TERMINATION COMPARTMENT

①
VISTA MODEL 633 WITH 1PH & 3PH OPERATION CIRCUIT CONFIGURATION (OVERHEAD VIEW)

- 1561-19-03
- 900 Amp Vista 633
- (3) 3 Phase 900A Switch Ways
- (1) 3 Phase 600A Fault Interrupter Way
- (2) 1 Phase 200A Fault Interrupter Ways

Note: For Vistas with Single Phase Fault Interrupter Ways, Three Switch Operating Mechanism will be present on the Single Phase Fault Interrupter Ways

OVERHEAD VIEW

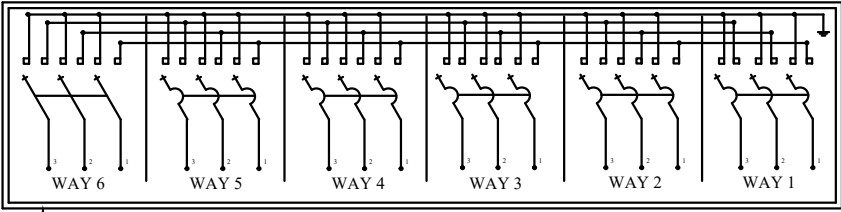


NOTE: ANY PRIMARY BUSHING NOT BEING UTILIZED SHALL HAVE AN INSULATED PROTECTIVE CAP INSTALLED. PROTECTIVE CAP CU TO BE USED IS 'CAPINSULW/TESTPOINT' (AE PART #15573). QTY OF CAPS TO BE DETERMINED BY APPLICATION. ALL FAULT INTERRUPTER OPERATING MECHANISMS NOT BEING UTILIZED SHALL BE LOCKED IN THE GROUND POSITION.

CU-REF	CU-ID	CU-DESCRIPTION
15611901	SWGPM3-600LDS3-600FI633	SWITCHGEAR VISTA 600 AMP MODEL 633
15611902	SWGPM3-900SLDS3-600FI633	SWITCHGEAR VISTA 900 AMP MODEL 633
15611903	SWG VISTA633-W/(2)1PHFI	SWITCHGEAR VISTA 633 WITH (2) 1PH FI

UNDERGROUND APPARATUS
SWITCHGEAR
PADMOUNT VISTA 615

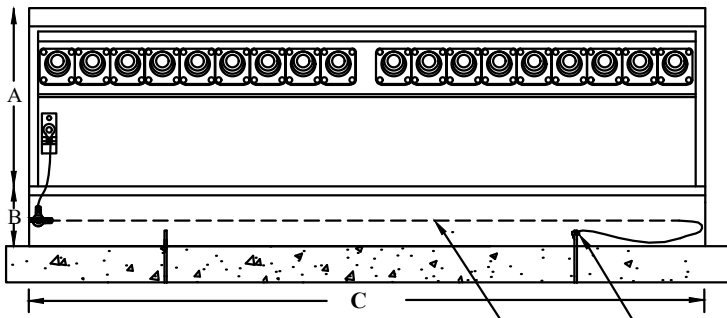
OPERATION COMPARTMENT



TERMINATION COMPARTMENT

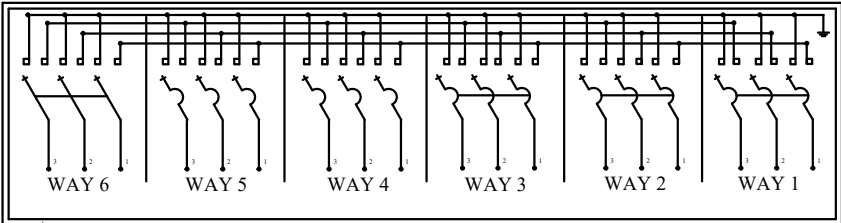
- ① VISTA MODEL 615 WITH 3PH OPERATION CIRCUIT CONFIGURATION (OVERHEAD VIEW)
- 1561-20-01
 - 600 Amp Vista 615
 - (1) 3 Phase 600A Switch Way
 - (5) 3 Phase 600A Fault Interrupter Ways

FRONT VIEW TERMINATION COMPARTMENT



- DIMENSIONS
- A - 29.5" FOR 600A; 38" FOR 900A
 - B - 12"
 - C - 102"
 - D - 61" FOR 600A; 71" FOR 900A (BELOW)

OPERATION COMPARTMENT

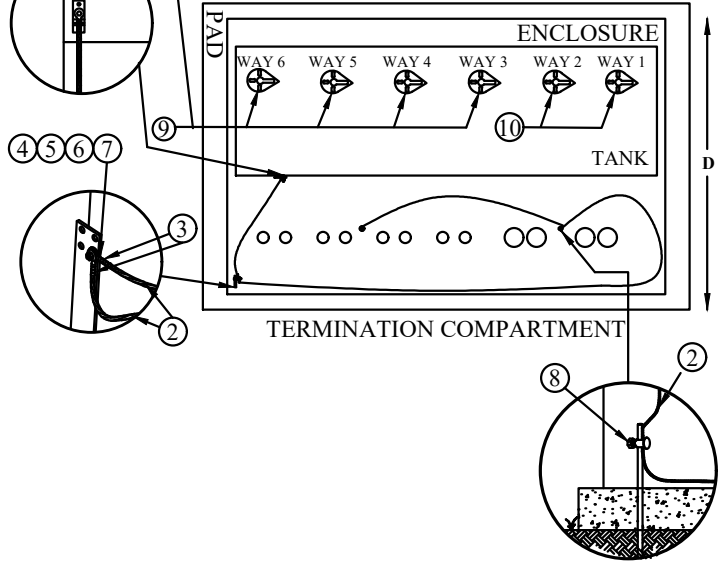


TERMINATION COMPARTMENT

- ① VISTA MODEL 615 WITH 1PH & 3PH OPERATION CIRCUIT CONFIGURATION (OVERHEAD VIEW)
- 1561-20-02
 - 900 Amp Vista 615
 - (1) 3 Phase 900A Switch Ways
 - (3) 3 Phase 600A Fault Interrupter Way
 - (2) 1 Phase 200A Fault Interrupter Ways

Note: For Vistas with Single Phase Fault Interrupter Ways, Three Switch Operating Mechanism will be present on the Single Phase Fault Interrupter Ways

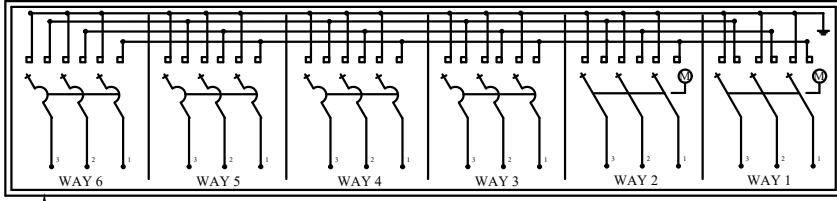
OVERHEAD VIEW OPERATION COMPARTMENT



NOTE: ANY PRIMARY BUSHING NOT BEING UTILIZED SHALL HAVE AN INSULATED PROTECTIVE CAP INSTALLED. PROTECTIVE CAP CU TO BE USED IS 'CAPINSULW/TESTPOINT' (AE PART #15573). QTY OF CAPS TO BE DETERMINED BY APPLICATION. ALL FAULT INTERRUPTER OPERATING MECHANISMS NOT BEING UTILIZED SHALL BE LOCKED IN THE GROUND POSITION.

CU-REF	CU-ID	CU-DESCRIPTION
15612001	SWGPM1-600LDS5-600F1615	SWITCHGEAR VISTA 600 AMP MODEL 615
15612002	SWGVISTA615-W/(2)1PHFI	SWITCHGEAR VISTA 615 WITH (2) 1 PH FI

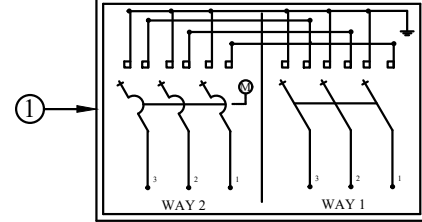
OPERATION COMPARTMENT



TERMINATION COMPARTMENT

- ① VISTA MODEL 624 WITH 3PH OPERATION CIRCUIT CONFIGURATION & MOTOR OPERATOR (OVERHEAD VIEW)
- 1561-22-01
 - 900 Amp Vista 624
 - (2) 3 Phase 900A Switch Ways w/ M.O.
 - (2) 3 Phase 600A F.I. Ways
 - (2) 3 Phase 200A F.I. Ways
 - 1561-22-02
 - 600 Amp Vista 624
 - (2) 3 Phase 600A Switch Ways w/ M.O.
 - (4) 3 Phase 200A F.I. Ways

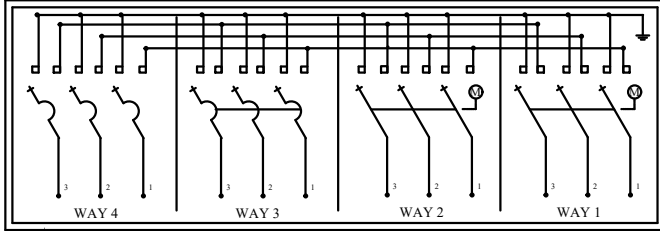
OPERATION COMPARTMENT



TERMINATION COMPARTMENT

- ① VISTA MODEL 211 WITH 3PH OPERATION CIRCUIT CONFIGURATION & MOTOR OPERATOR (OVERHEAD VIEW)
- 1561-22-03
 - 600 Amp Vista 624
 - (1) 3 Phase 600A Switch Way
 - (1) 3 Phase 600A F.I. Way w/ M.O.

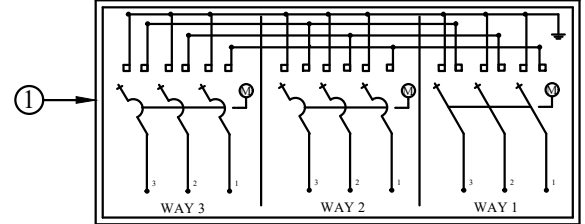
OPERATION COMPARTMENT



TERMINATION COMPARTMENT

- ① VISTA MODEL 422 WITH 3PH OPERATION CIRCUIT CONFIGURATION & MOTOR OPERATOR (OVERHEAD VIEW)
- 1561-22-04
 - 600 Amp Vista 422
 - (2) 3 Phase 600A Switch Ways w/ M.O.
 - (2) 3 Phase 200A F.I. Ways

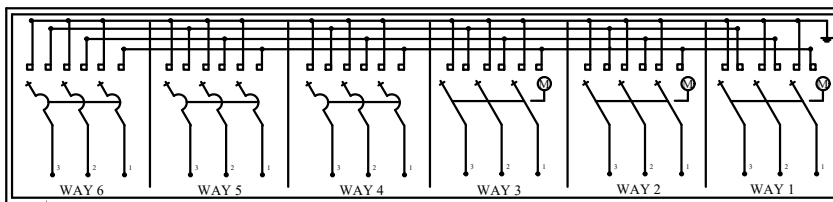
OPERATION COMPARTMENT



TERMINATION COMPARTMENT

- ① VISTA MODEL 312 WITH 3PH OPERATION CIRCUIT CONFIGURATION & MOTOR OPERATOR (OVERHEAD VIEW)
- 1561-22-06
 - 600 Amp Vista 312
 - (1) 3 Phase 600A Switch Ways w/ M.O.
 - (2) 3 Phase F.I. Ways w/ M.O.

OPERATION COMPARTMENT



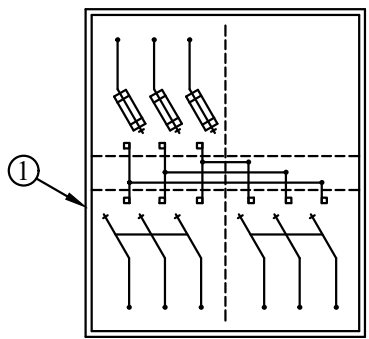
TERMINATION COMPARTMENT

- ① VISTA MODEL 633 WITH 3PH OPERATION CIRCUIT CONFIGURATION & MOTOR OPERATOR (OVERHEAD VIEW)
- 1561-22-05
 - 600 Amp Vista 633
 - (3) 3 Phase 600A Switch Ways w/ M.O.
 - (3) 3 Phase 200A F.I. Ways

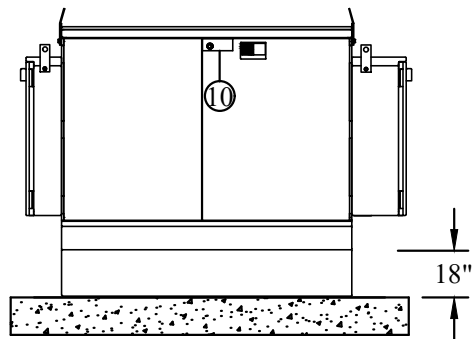
CU-REF	CU-ID	CU-DESCRIPTION
15612201	SWGRPDMNTRMTE624/2-900ASW	SWGR PD MNT RMTE MOD 624 15KV MOTOR OPER
15612202	SWGRPDMTRMTEMOD624	SWGR PD MT RMTE MOD 624 2- 600ASW 4- 200AF
15612203	SWGRPDMTRMTEMOD211	SWGR PD MT RMTE MOD211
15612204	SWGRPDMTRMTEMOD422	SWGR PD MT RMTE MOD 422 2- 600A SW 2- 200A
15612205	SWGRPDMTRMTEMOD633	SWGR PD MNT RMTE MOD 633 3- 600ASW 3- 200A
15612206	SWGR600A312RMTE SUPVSEL751	SWGR 600A 312 RMTE SUPV SEL- 751 RELAY

REV_DATE:

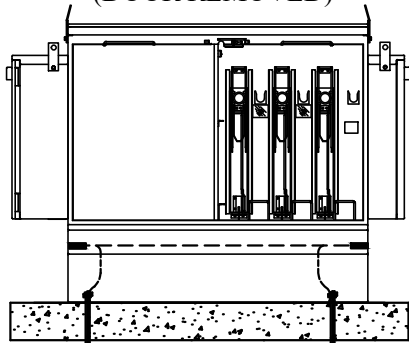
04/01/26



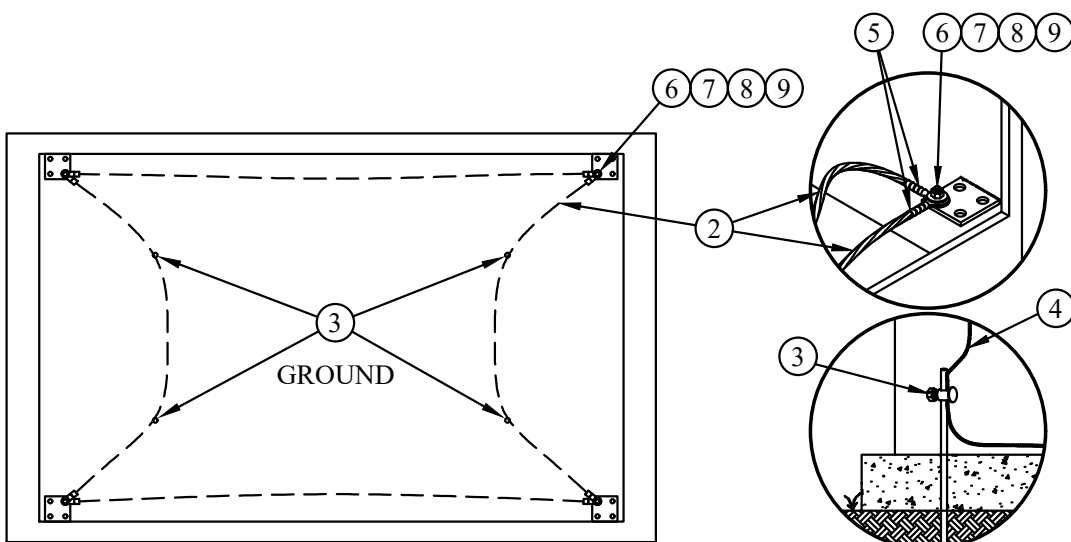
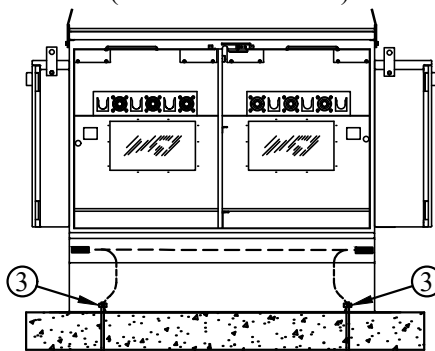
2-SWITCH, 1-TAP ATO
CIRCUIT CONFIGURATION



FUSE SIDE
(DOOR REMOVED)



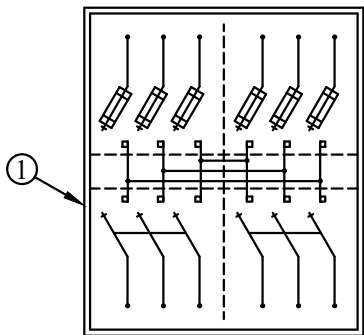
SWITCH SIDE
(DOOR REMOVED)



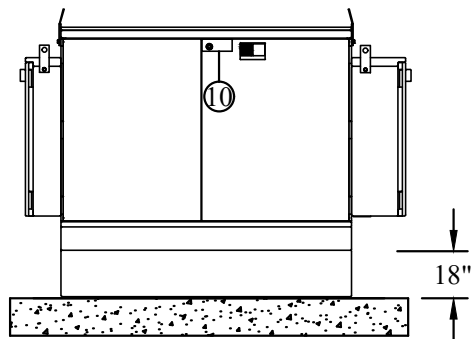
CU-REF	CU-ID	CU-DESCRIPTION
15612401	SWGATOPME6DF	SWGR ATO PME- 6 DEAD FRONT

REV_DATE:

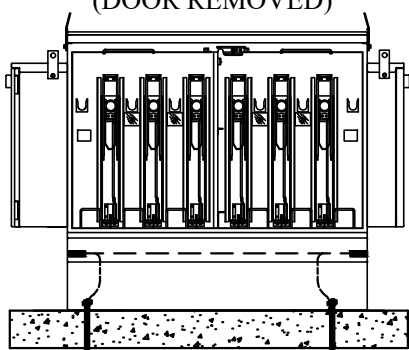
04/01/26



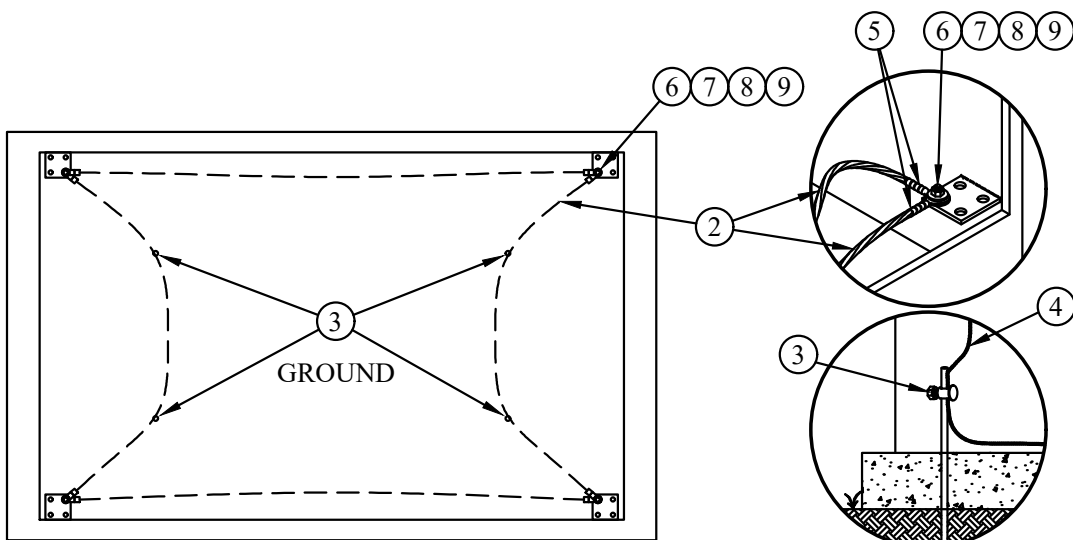
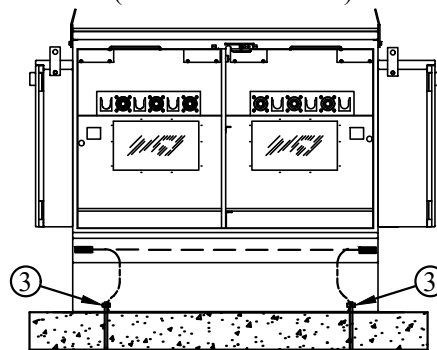
2-SWITCH, 2-TAP ATO
CIRCUIT CONFIGURATION



FUSE SIDE
(DOOR REMOVED)



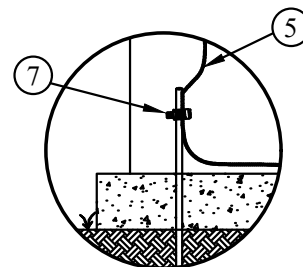
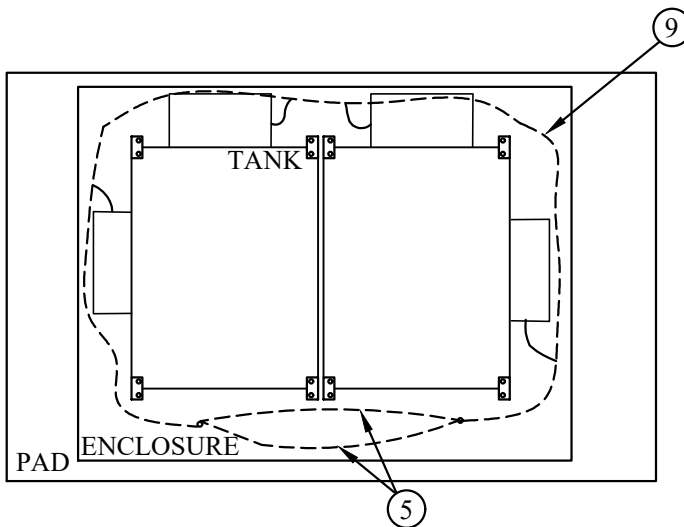
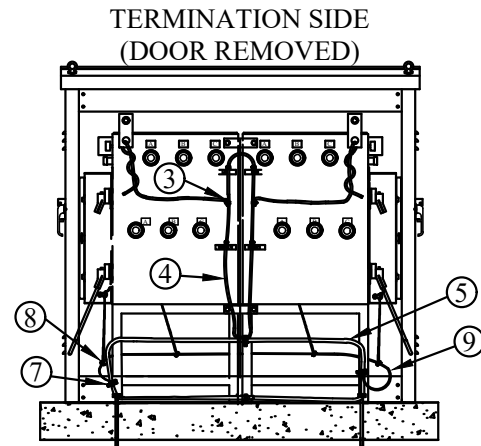
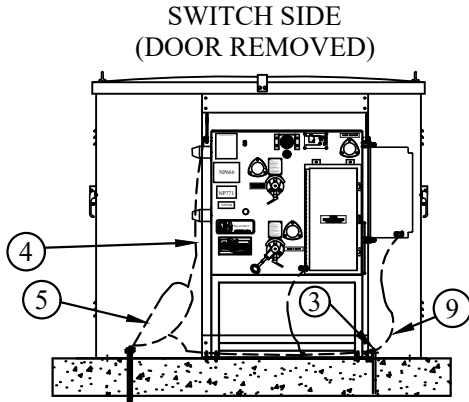
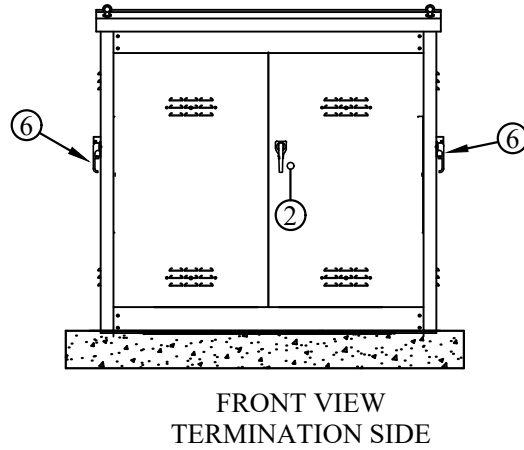
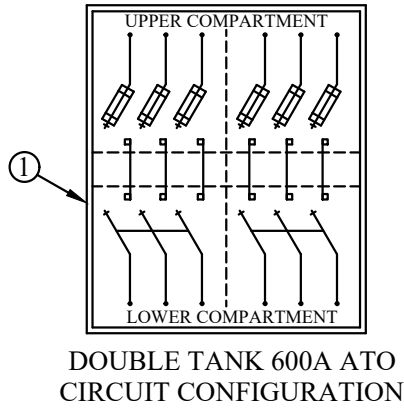
SWITCH SIDE
(DOOR REMOVED)



CU-REF	CU-ID	CU-DESCRIPTION
15612501	SWGATOPME9DF	SWGR ATO PME-9 DEADFRONT

REV_DATE:

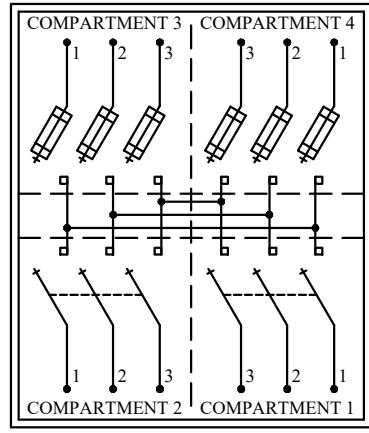
04/01/26



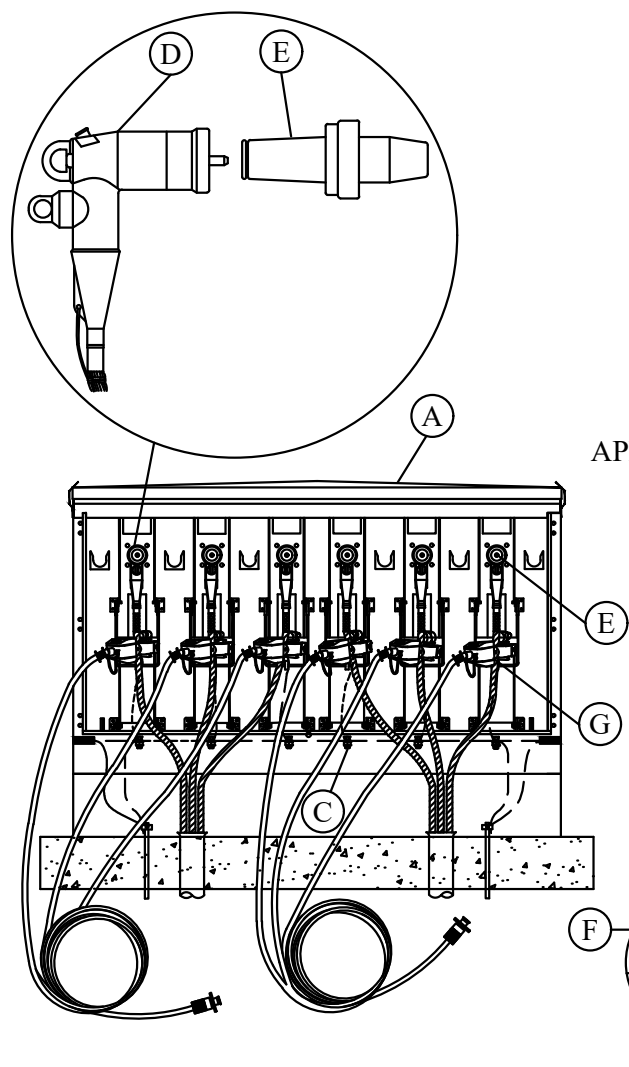
CU-REF	CU-ID	CU-DESCRIPTION
15612601	SWGATODT600A	SWGR ATO DOUBLE TANK 600A

UNDERGROUND APPARATUS
 SWITCHGEAR
 PADMOUNT PME-9

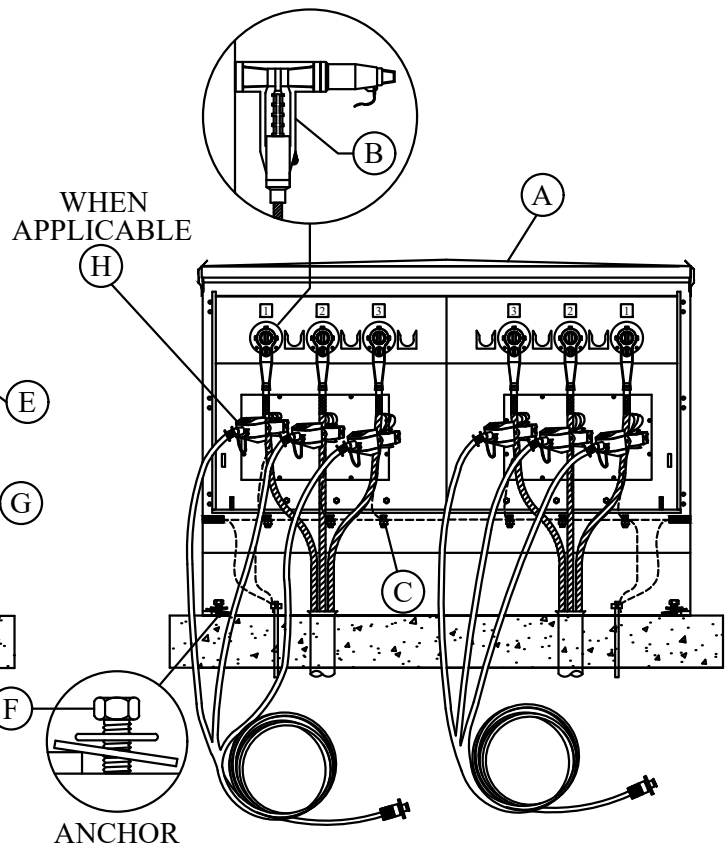
1561-29-01
 1561-29-50
 1561-29-75



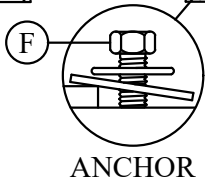
PME-09
 CIRCUIT CONFIGURATION



FUSE SIDE
 (DOORS REMOVED)



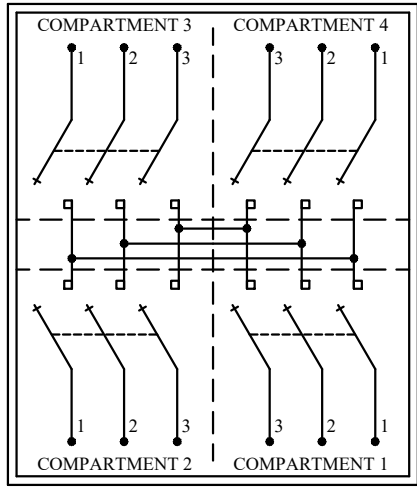
SWITCH SIDE
 (DOORS REMOVED)



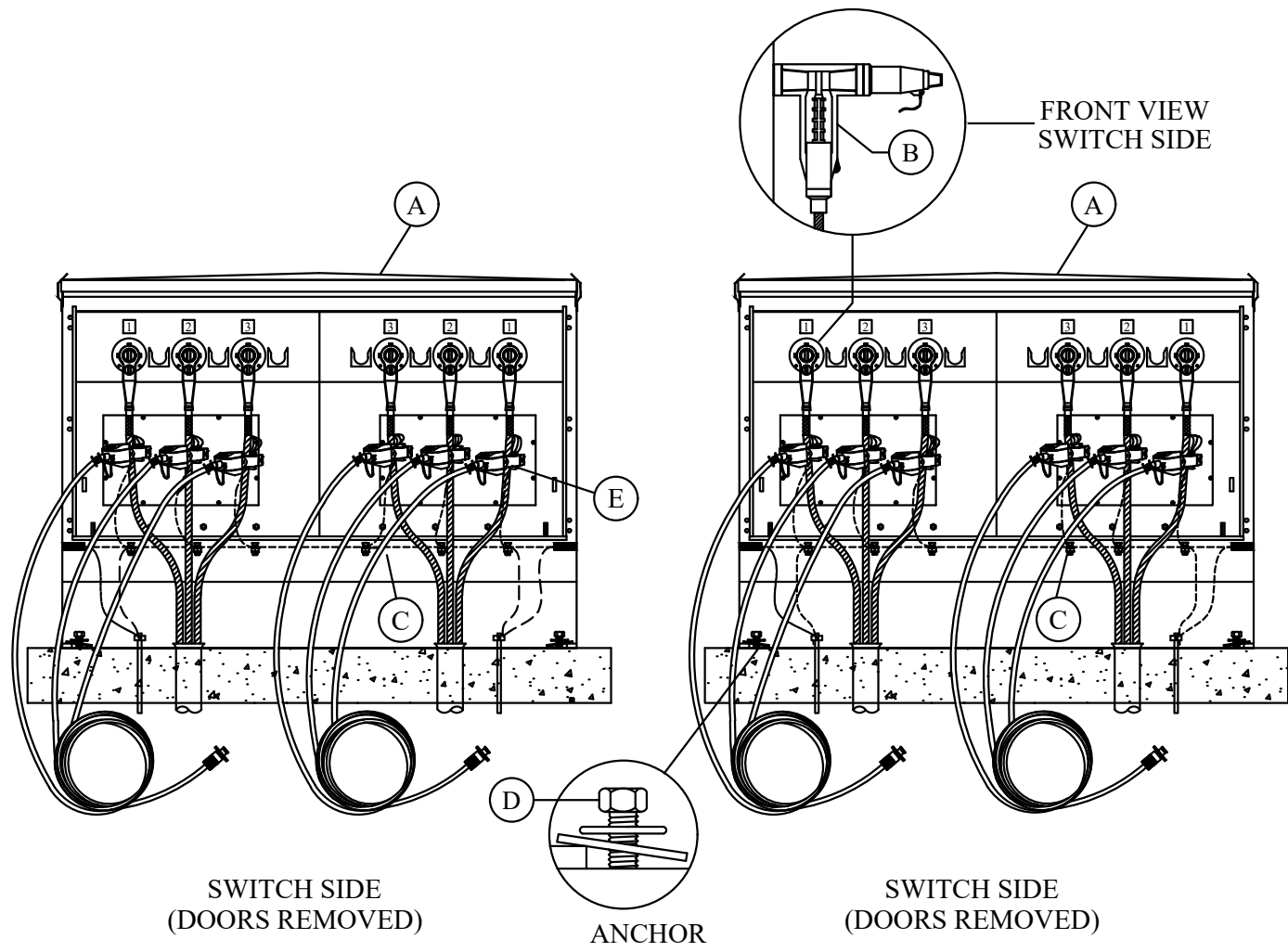
MU-REF	MU-ID	MU-DESCRIPTION
15612901	SWGPM3PHPME9-250CU	SWITCHGEAR PAD MOUNT PME 9 W/250 CU
15612950	SWGPM3PHPME9-500CU	SWITCHGEAR PAD MOUNT PME 9 W/500 CU
15612975	SWGPM3PHPME9-1000CU	SWITCHGEAR PAD MOUNT PME 9 W/1000 CU

UNDERGROUND APPARATUS
 SWITCHGEAR
 PADMOUNT PME-10

1561-30-01
 1561-30-50
 1561-30-75



PME-10
 CIRCUIT CONFIGURATION



SWITCH SIDE
 (DOORS REMOVED)

ANCHOR

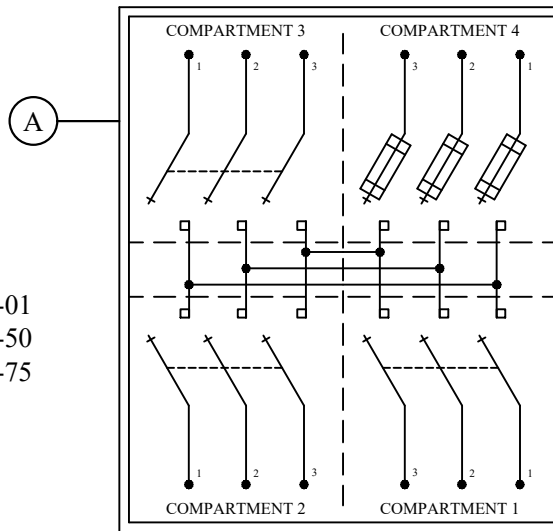
SWITCH SIDE
 (DOORS REMOVED)

MU-REF	MU-ID	MU-DESCRIPTION
15613001	SWGPM3PHPME9-250CU	SWITCHGEAR PAD-MOUNT PME 10 W/250 CU
15613050	SWGPM3PHPME9-500CU	SWITCHGEAR PAD MOUNT PME 10 W/500 CU
15613075	SWGPM3PHPME10-1000CU	SWITCHGEAR PAD MOUNT PME 10 W/1000 CU

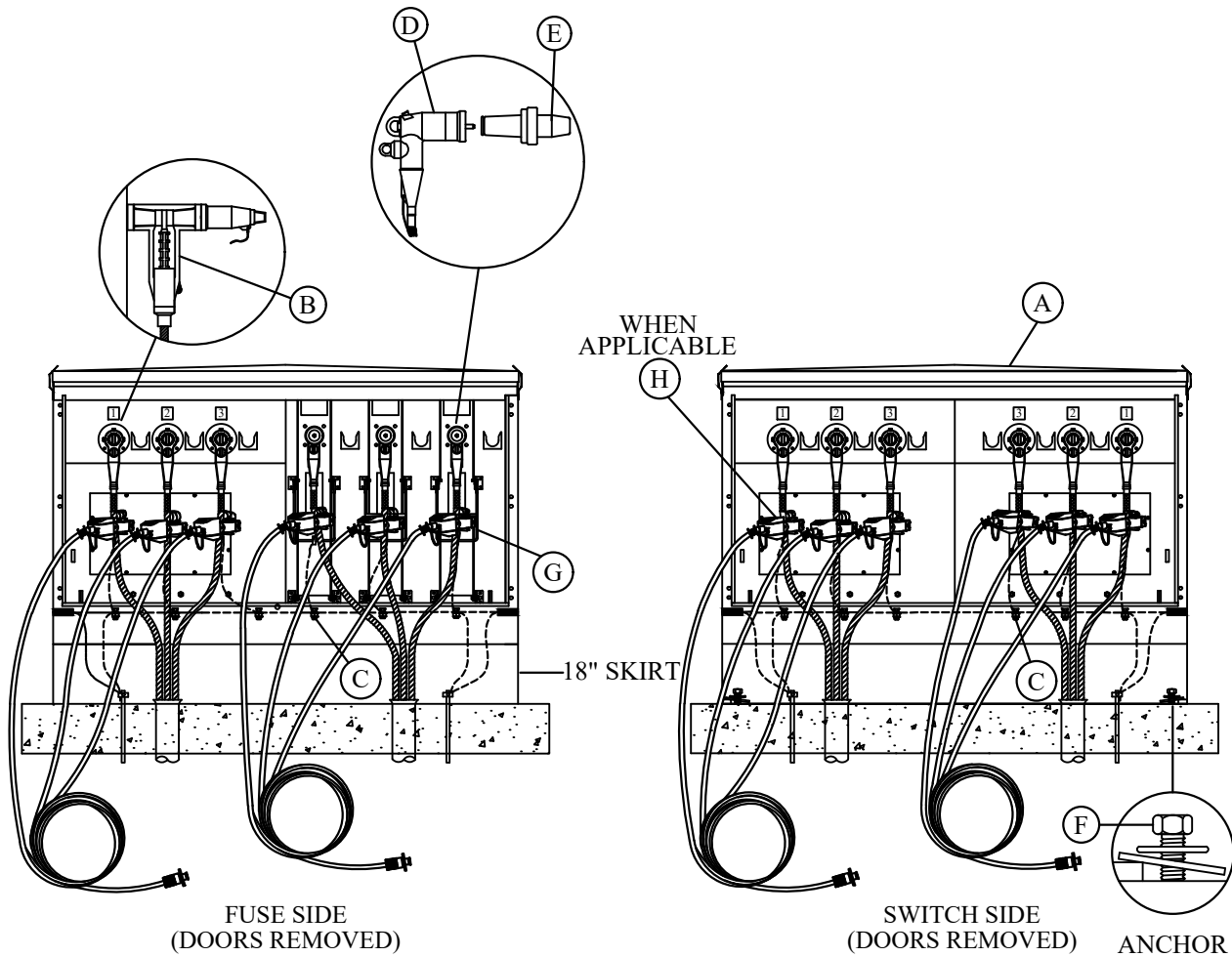
REV_DATE:

04/01/26

1561-31-01
1561-31-50
1561-31-75



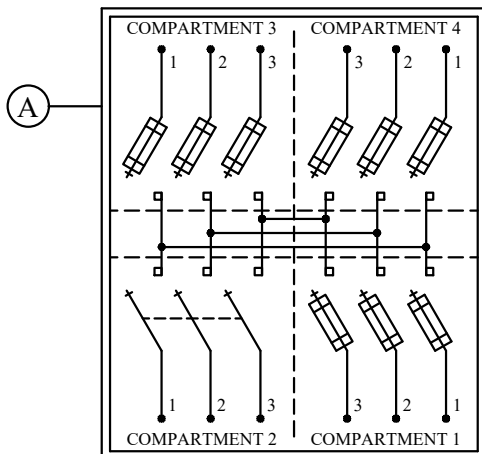
PME-11
CIRCUIT CONFIGURATION



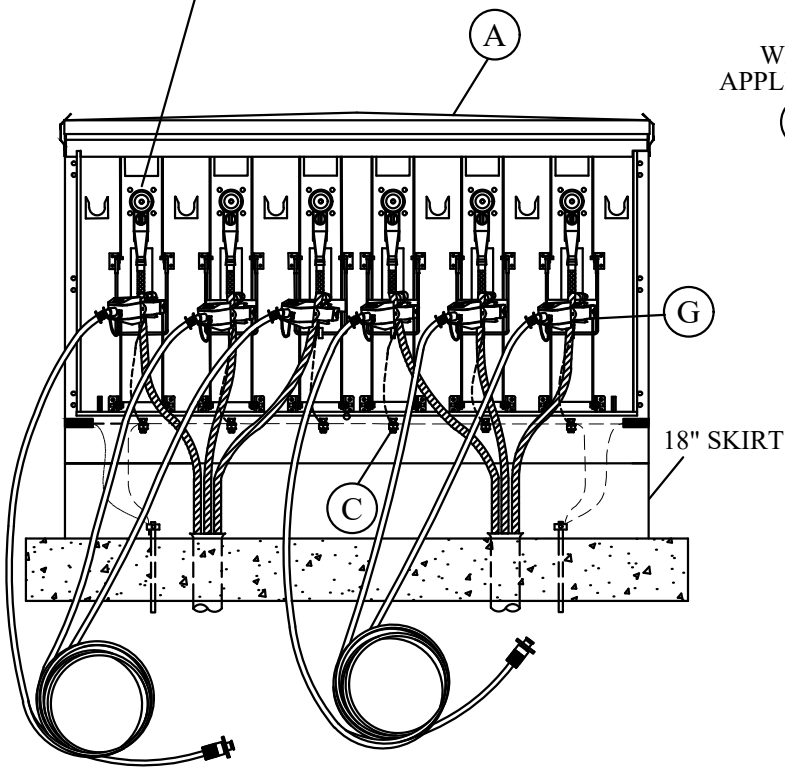
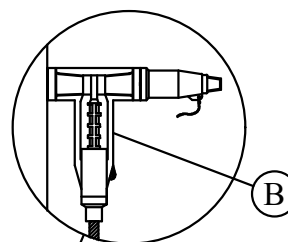
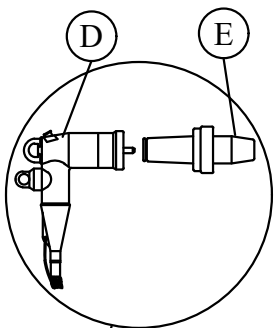
MU-REF	MU-ID	MU-DESCRIPTION
15613101	SWGPM3PHPME11-250CU	SWITCHGEAR PAD MOUNT PME 11 W/250 CU
15613150	SWGPM3PHPME11-500CU	SWITCHGEAR PAD MOUNT PME 11 W/500 CU
15613175	SWGPM3PHPME11-1000CU	SWITCHGEAR PAD MOUNT PME 11 W/1000 CU

REV_DATE:
04/01/26

1561-32-01
1561-32-50
1561-32-75

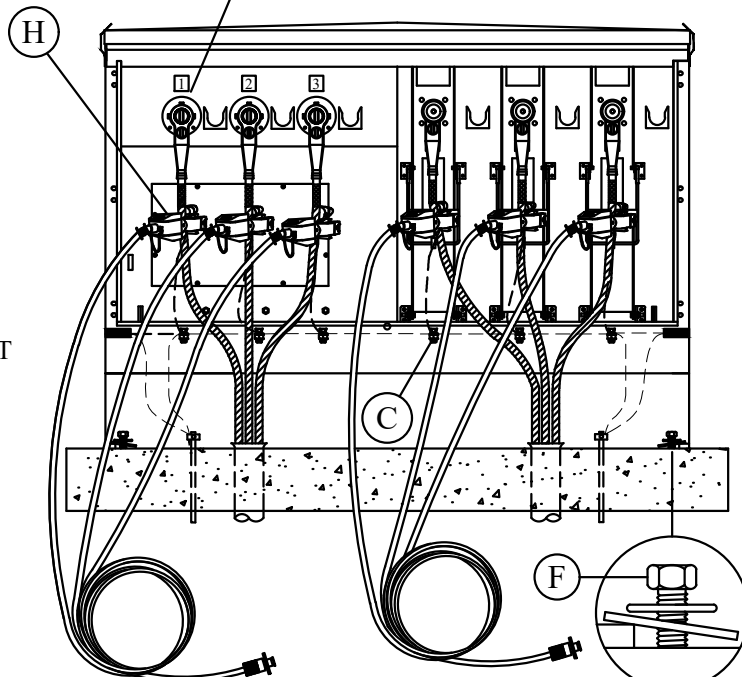


PME-12
CIRCUIT CONFIGURATION



FUSE SIDE
(DOORS REMOVED)

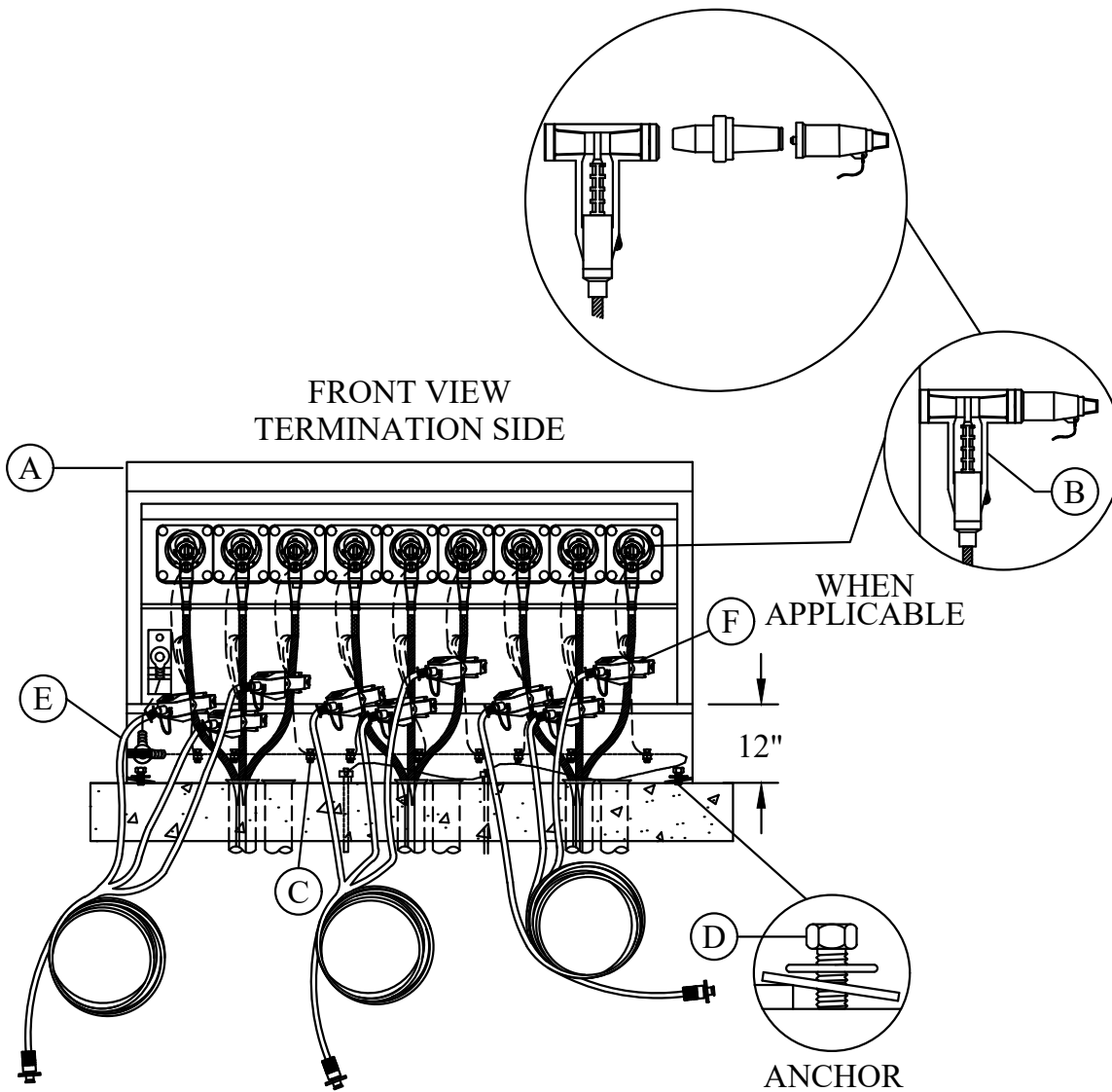
WHEN APPLICABLE



SWITCH SIDE
(DOORS REMOVED)

ANCHOR

MU-REF	MU-ID	MU-DESCRIPTION
15613201	SWGPM3PHPME12-250CU	SWITCHGEAR PAD MOUNT PME 12 W/250 CU
15613250	SWGPM3PHPME12-500CU	SWITCHGEAR PAD MOUNT PME 12 W/500 CU
15613275	SWGPM3PHPME12-1000CU	SWITCHGEAR PAD MOUNT PME 12 W/1000 CU



VISTA MODEL 321 WITH
 3PH OPERATION
 CIRCUIT CONFIGURATION
 (2) 3PH 600A SWITCH WAYS
 (1) 3PH 600A FAULT INTERRUPTER WAY

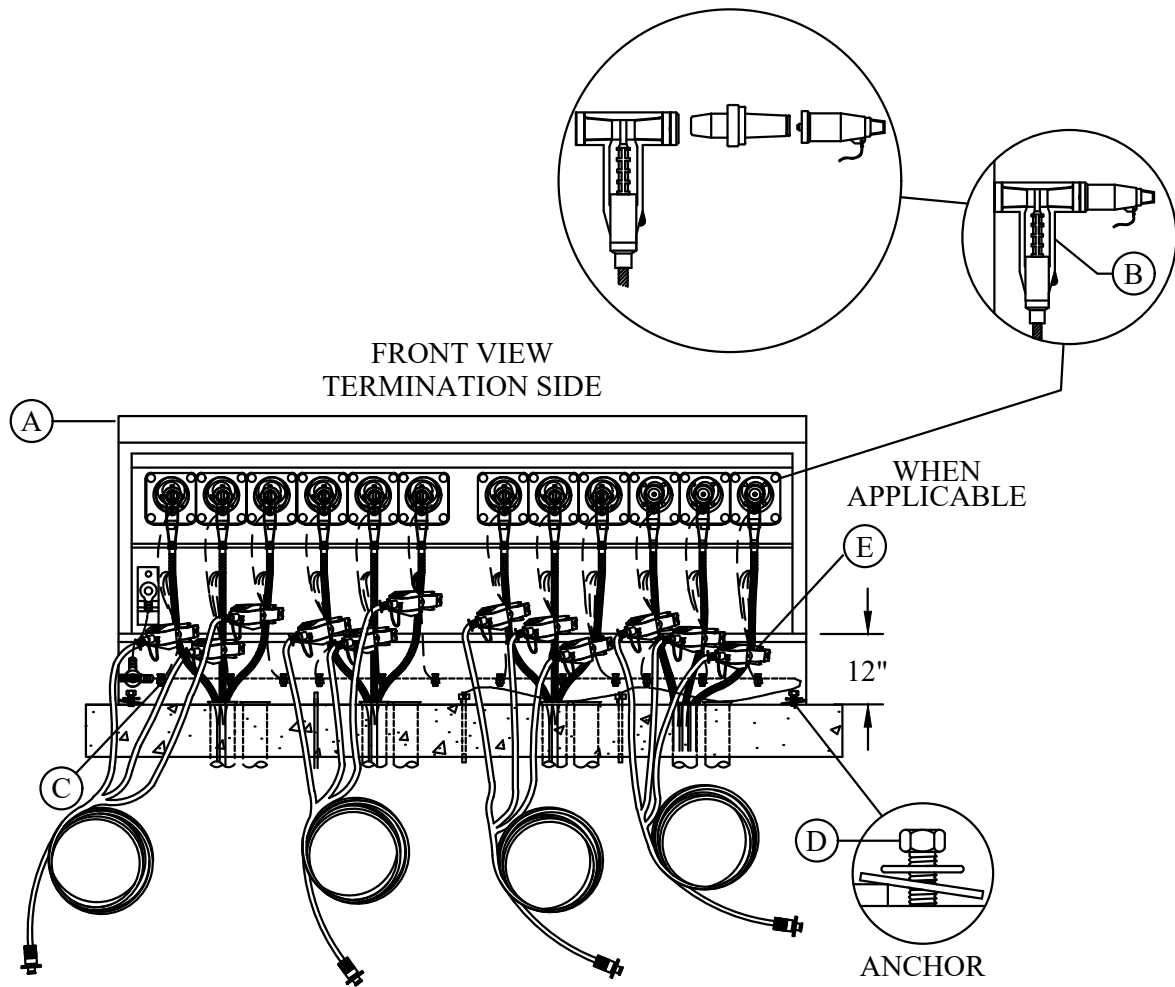
- 1561-37-01
- 1561-37-02
- 1561-37-03

VISTA MODEL 321 WITH
 3PH OPERATION
 CIRCUIT CONFIGURATION
 (2) 3PH 900A SWITCH WAYS
 (1) 3PH 600A FAULT INTERRUPTER WAY

- 1561-37-04

MU-REF	MU-ID	MU-DESCRIPTION
15613701	SWGPMVISTA321-600A1/0	SWITCHGEAR VISTA 321 600A 1/0
15613702	SWGPMVISTA321-600A250	SWITCHGEAR VISTA 321 600A 250MCM
15613703	SWGPMVISTA321-600A500	SWITCHGEAR VISTA 321 600A 500MCM
15613704	SWGPMVISTA321-900A1000	SWITCHGEAR VISTA 321 900A 1000MCM

UNDERGROUND APPARATUS
 SWITCHGEAR
 PADMOUNT VISTA 422 & 440



VISTA MODEL 422 WITH
 3PH OPERATION
 CIRCUIT CONFIGURATION
 (2) 3PH 600A SWITCH WAYS
 (2) 3PH 600A FAULT INTERRUPTER WAY

- 1561-38-01
- 1561-38-02
- 1561-38-03

VISTA MODEL 440 WITH
 3PH OPERATION
 CIRCUIT CONFIGURATION
 (4) 3PH 600A SWITCH WAYS

- 1561-38-11
- 1561-38-12
- 1561-38-13

VISTA MODEL 422 WITH
 3PH OPERATION
 CIRCUIT CONFIGURATION
 (2) 3PH 900A SWITCH WAYS
 (2) 3PH 600A FAULT INTERRUPTER WAY

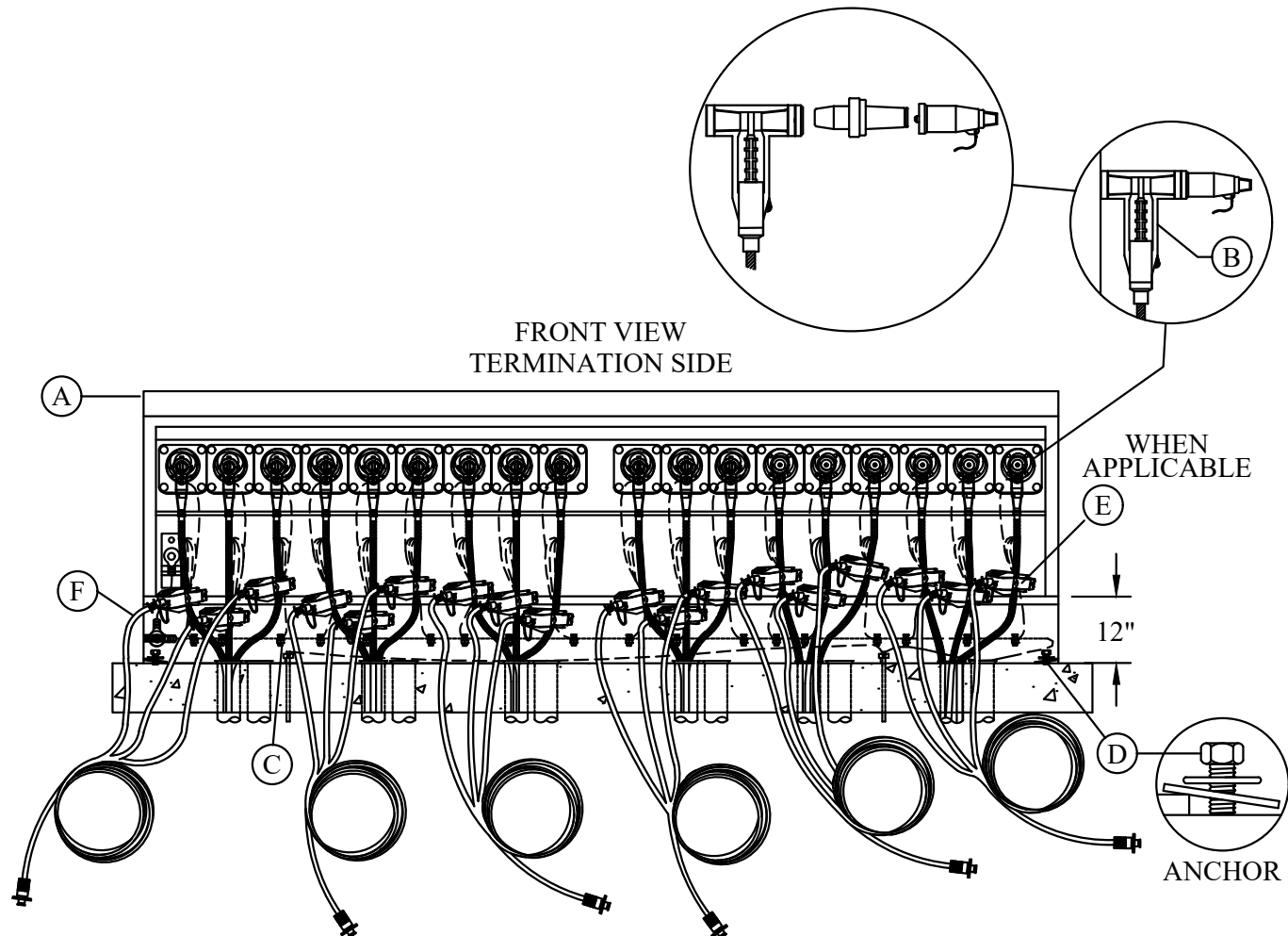
- 1561-38-04

VISTA MODEL 440 WITH
 3PH OPERATION
 CIRCUIT CONFIGURATION
 (4) 3PH 900A SWITCH WAYS

- 1561-38-14

MU-REF	MU-ID	MU-DESCRIPTION
15613801	SWGPMVISTA422-600A1/0	SWITCHGEAR VISTA 422 600 A 1/0
15613802	SWGPMVISTA422-600A250	SWITCHGEAR VISTA 422 600A 250MCM
15613803	SWGPMVISTA422-600A500	SWITCHGEAR VISTA 422 600A 500MCM
15613804	SWGPMVISTA422900A1000	SWITCHGEAR VISTA 422 900A 1000MCM
15613811	SWGPMVISTA440-600A1/0	SWITCHGEAR VISTA 440 600A 1/0
15613812	SWGPMVISTA440-600A250	SWITCHGEAR VISTA 440 600A 250MCM
15613813	SWGPMVISTA440-600A500	SWITCHGEAR VISTA 440 600A 500MCM
15613814	SWGPMVISTA440-900A1000	SWITCHGEAR VISTA 440 900A 1000MCM

UNDERGROUND APPARATUS
 SWITCHGEAR
 PADMOUNT VISTA 624 & 633



VISTA MODEL 624 WITH 3PH OPERATION
 CIRCUIT CONFIGURATION
 (2) 3PH 600A SWITCH WAYS
 (4) 3PH 600A FAULT INTERRUPTER WAY

1561-39-01
 1561-39-02
 1561-39-03

VISTA MODEL 633 WITH 3PH OPERATION
 CIRCUIT CONFIGURATION
 (3) 3PH 600A SWITCH WAYS
 (3) 3PH 600 FAULT INTERRUPTER WAYS

1561-39-31
 1561-39-32
 1561-39-33

VISTA MODEL 624 WITH 3PH OPERATION
 CIRCUIT CONFIGURATION
 (2) 3PH 900A SWITCH WAYS
 (4) 3PH 600A FAULT INTERRUPTER WAY

1561-39-04

VISTA MODEL 633 WITH 3PH OPERATION
 CIRCUIT CONFIGURATION
 (3) 3PH 900A SWITCH WAYS
 (3) 3PH FAULT INTERRUPTER WAYS

1561-39-34

MU-REF	MU-ID	MU-DESCRIPTION
15613901	SWGPMVISTA624-600A1/0	SWITCHGEAR VISTA 624 600A 1/0
15613902	SWGPMVISTA624-600A250	SWITCHGEAR VISTA 624 600A 250MCM
15613903	SWGPMVISTA624-600A500	SWITCHGEAR VISTA 624 600A 500MCM
15613904	SWGPMVISTA624-900A1000	SWITCHGEAR VISTA 624 900A 1000MCM
15613931	SWGPMVISTA633-600A1/0	SWITCHGEAR VISTA 633 600A 1/0
15613932	SWGPMVISTA633-600A250	SWITCHGEAR VISTA 633 600A 250MCM
15613933	SWGPMVISTA633-600A500	SWITCHGEAR VISTA 633 600A 500 MCM
15613934	SWGPMVISTA633-900A1000	SWITCHGEAR VISTA 633 900A 1000MCM