

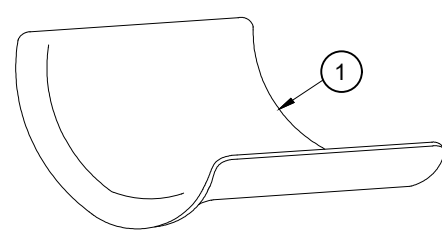
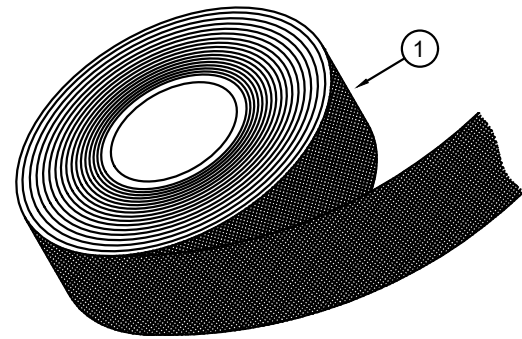
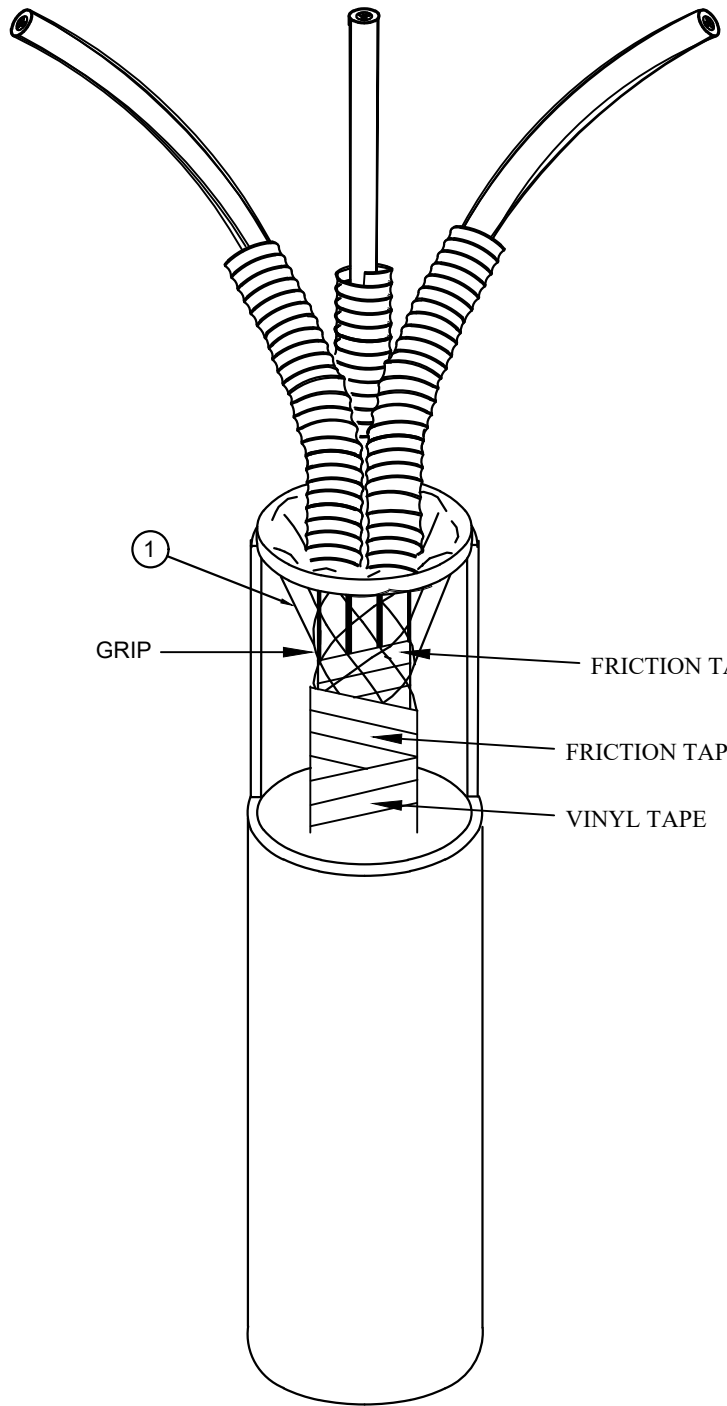
1360

RISERS - PRIMARY AND SECONDARY

CONTAINS

- 1360-05 CABLE SUPPORT 3-5 IN CONDUIT RANGE
- 1360-07 CONDUIT MATERIAL FLEXIBLE
- 1360-09 BRACKET STANDOFF
- 1360-12 TERMINATION COLD SHRINK AL/CU
- 1360-14 ARRESTER ASSEMBLIES 1, 2, 3PH & POWER CABLE
- 1360-15 GROUNDING RISER
- 1360-20 1PH RISER
- 1360-21 2PH RISER
- 1360-22 3PH RISER
- 1360-40 RISER DISTRIBUTION POWER CABLE
- 1360-60 RISER SECONDARY 2/3/4/5 INCH
- 1360-70 COMMUNICATIONS RISER

REV_DATE:
04/01/26

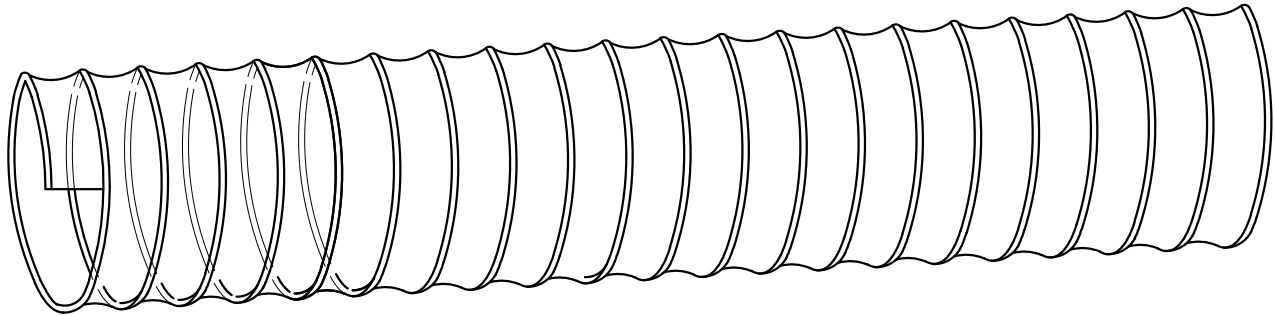


DUCT SAVER
FOR USE ON 500 MCM AND
1000 MCM ONLY
1418-11-10

- 1360-05-02 2"
- 1360-05-03 3"
- 1360-05-04 4"
- 1360-05-05 5"

MU-REF	MU-ID	MU-DESCRIPTION
13600502	CBLSUP2INCOND	CABLE SUPPORT 2 IN CONDUIT
13600503	CBLSUP3INCOND	CABLE SUPPORT 3 IN CONDUIT
13600504	CBLSUP4INCOND	CABLE SUPPORT 4 IN CONDUIT
13600505	CBLSUP5INCOND	CABLE SUPPORT 5 IN CONDUIT
13600506	CBLSUP6INCOND	CABLE SUPPORT 6 IN CONDUIT

POLE APPARATUS
 RISERS - PRIMARY AND SECONDARY
 CONDUIT MATERIAL FLEXIBLE

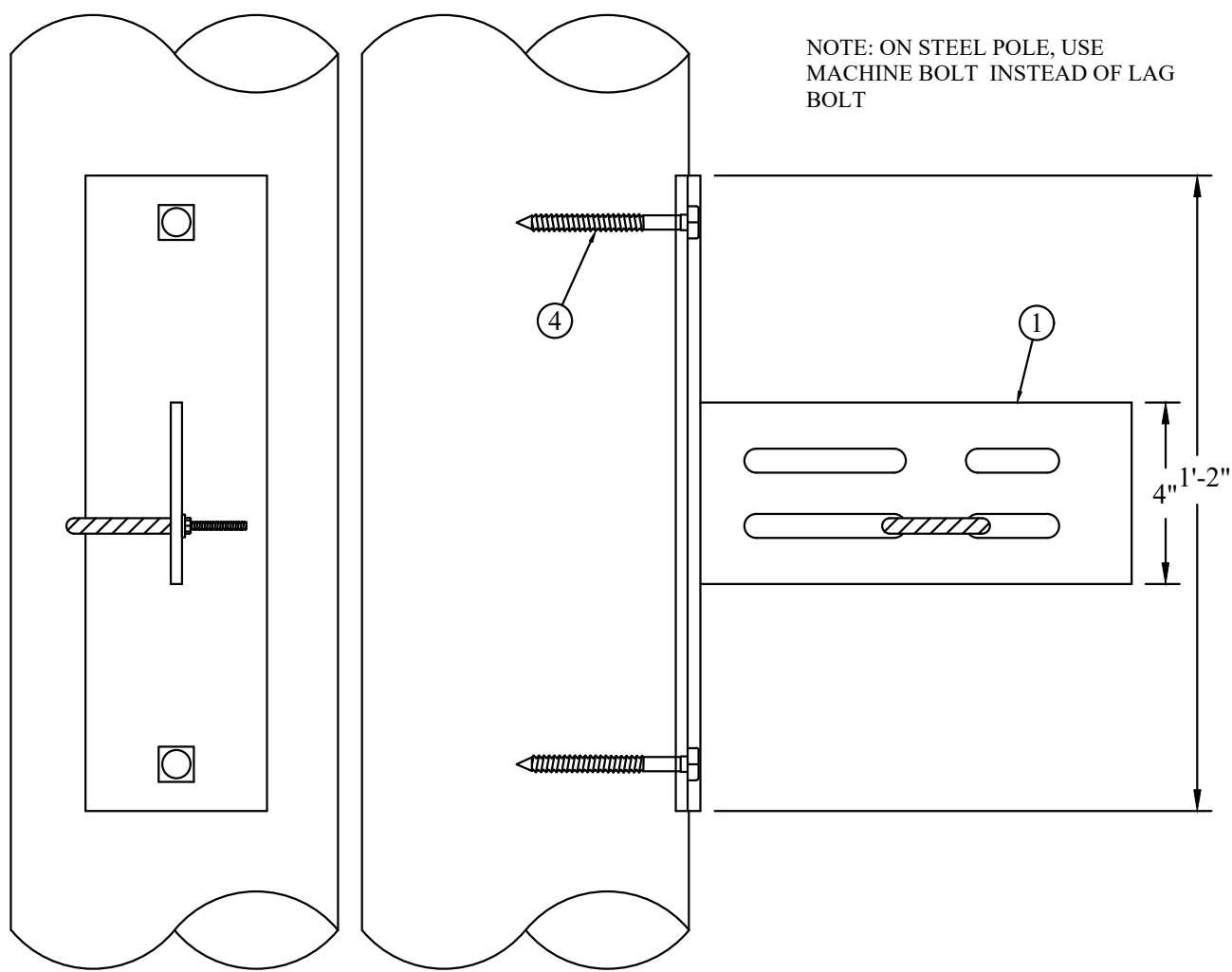
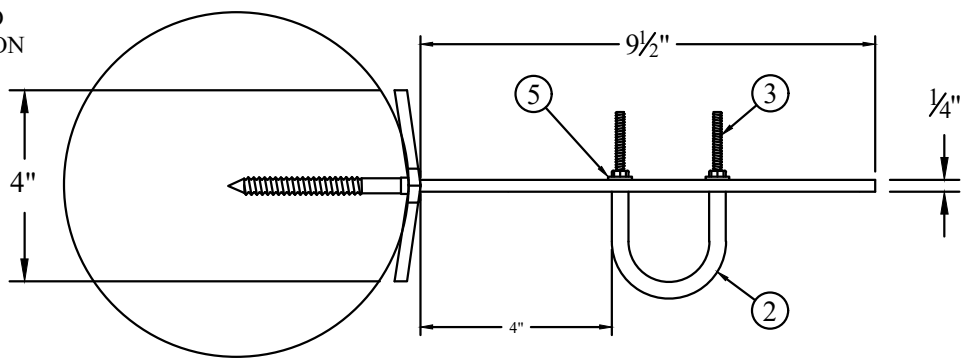


1360-07-01 1 1/4"
 1360-07-02 2"
 1360-07-25 2 1/2"

CU-REF	CU-ID	CU-DESCRIPTION
13600701	CONDMTLFLX1-1/4IN	CONDUIT METAL FLEXIBLE 1- 1/4 IN
13600702	CONDMTLFLX2IN	CONDUIT METAL FLEXIBLE 2 IN
13600725	CONDMTLFLX2-1/2IN	CONDUIT METAL FLEXIBLE 2- 1/2 IN

REV_DATE:
04/01/26

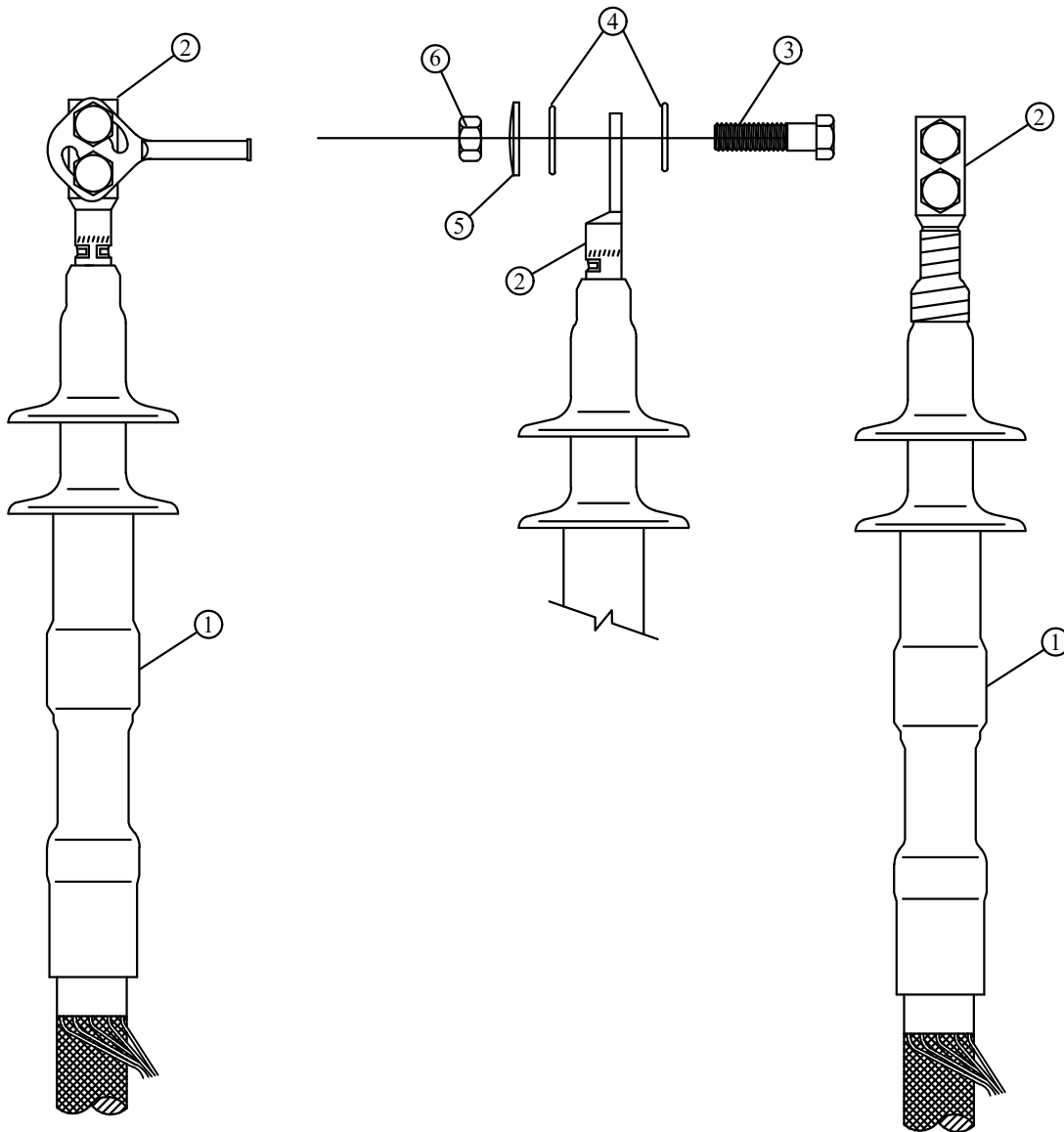
ONE RISER CONDUIT BRACKET IS NEEDED FOR EACH 10' PORTION OF THE RISER CONDUIT.



NOTE: ON STEEL POLE, USE MACHINE BOLT INSTEAD OF LAG BOLT

1360-09-20 2" 1360-09-30 3"
1360-09-40 4" 1360-09-50 5"

MU-REF	MU-ID	MU-DESCRIPTION
13600920	BRKTSTNDOFF2INCOND	BRACKET STANDOFF 2 IN CONDUIT
13600930	BRKTSTNDOFF3INCOND	BRACKET STANDOFF 3 IN CONDUIT
13600940	BRKTSTNDOFF4INCOND	BRACKET STANDOFF 4 IN CONDUIT
13600950	BRKTSTNDOFF5INCOND	BRACKET STANDOFF 5 IN CONDUIT



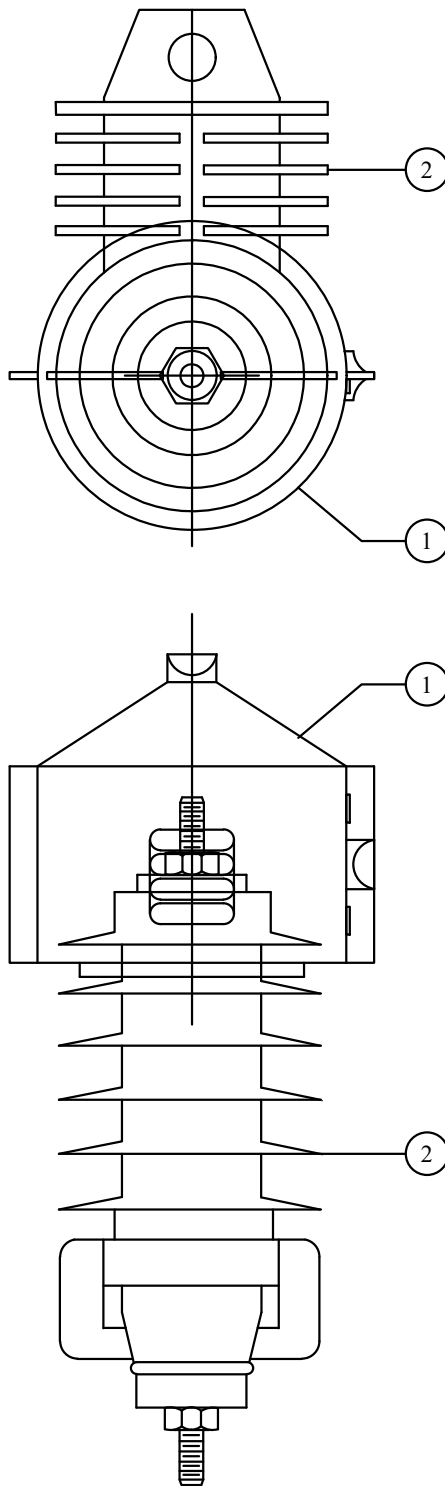
1360-12-10 250 MCM
 1360-12-20 500 MCM
 1360-12-30 1000 MCM

1360-12-02 #2 CU
 1360-12-03 1/0 AL

NOTES:

1. PRIOR TO INSTALLING ALUMINUM CONDUCTOR CONNECTORS, CLEAN THE CONDUCTOR WITH A WIRE BRUSH TO REMOVE OXIDES. IMMEDIATELY APPLY A NO-GRIT INHIBITOR TO THE CONTACT SURFACE OF THE CONNECTOR. CONNECTORS GENERALLY COME WITH FACTORY-APPLIED INHIBITOR.
2. INSTALL COMPRESSION CONNECTOR ACCORDING TO MANUFACTURER'S INSTRUCTIONS. AFTER CRIMPING THE CONNECTOR, REMOVE ANY EXCESS JOINT COMPOUND AND REMOVE ANY SHARP EDGES.

CU-REF	CU-ID	CU-DESCRIPTION
13601202	TERMCS2CU15KV	TERMINATION COLD SHRINK #2 CU 15KV
13601203	TERMCS1/0AL15KV	TERMINATION COLD SHRINK 1/0 AL 15KV
13601210	TERMCS250CU15KV	TERMINATION COLD SHRINK 250 CU 15KV
13601220	TERMCS500CU15KV	TERMINATION COLD SHRINK 500 CU 15KV
13601230	TERMCS1KCU15KV	TERMINATION COLD SHRINK 1000 CU 15KV
13601250	BKTMGTGTERM CBL1.8IN- 2.4IN	BKT MTG FOR TERM CBL RANGE 1.8IN - 2.4IN

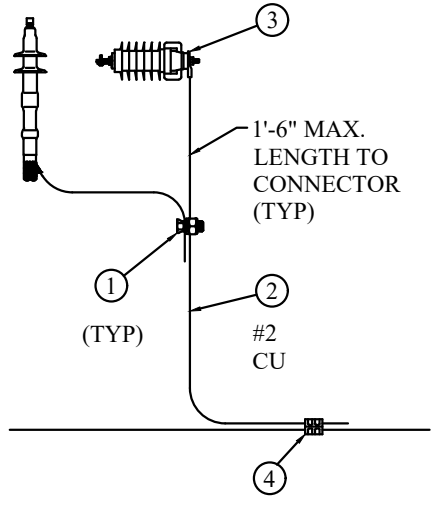


1360-14-01

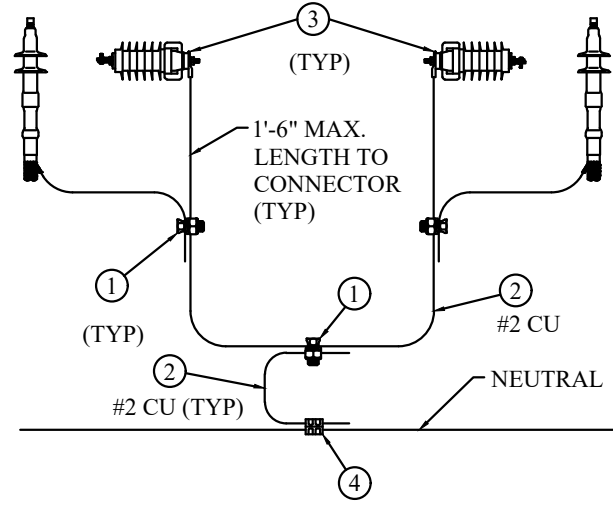
FOR TRANSFORMERS, LINE, AND CAPACITORS

MU-REF	MU-ID	MU-DESCRIPTION
13601401	ARASSYPRIRIS1PH	ARRESTER ASSEMBLY/PRI RIS 1 PH
13601403	ARASSYPRIRIS3PH	ARRESTER ASSEMBLY/PRI RIS 3 PH
13601405	ARASSYPCRIS3PH	ARRESTER ASSEMBLY POWER CABLE RISER 3 PH

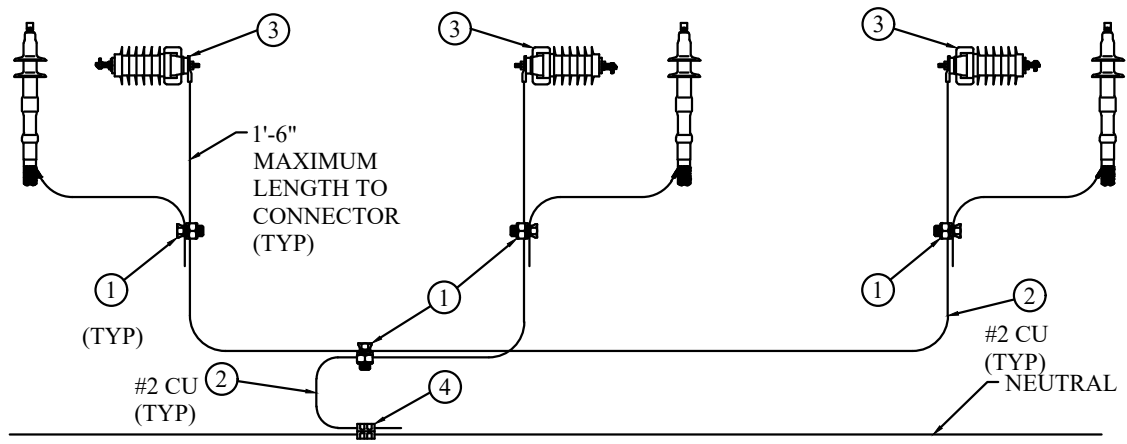
REV_DATE:
04/01/26



1360-15-11 1/0 NEUTRAL
1360-15-12 4/0 NEUTRAL



1360-15-21 1/0 NEUTRAL
1360-15-22 4/0 NEUTRAL

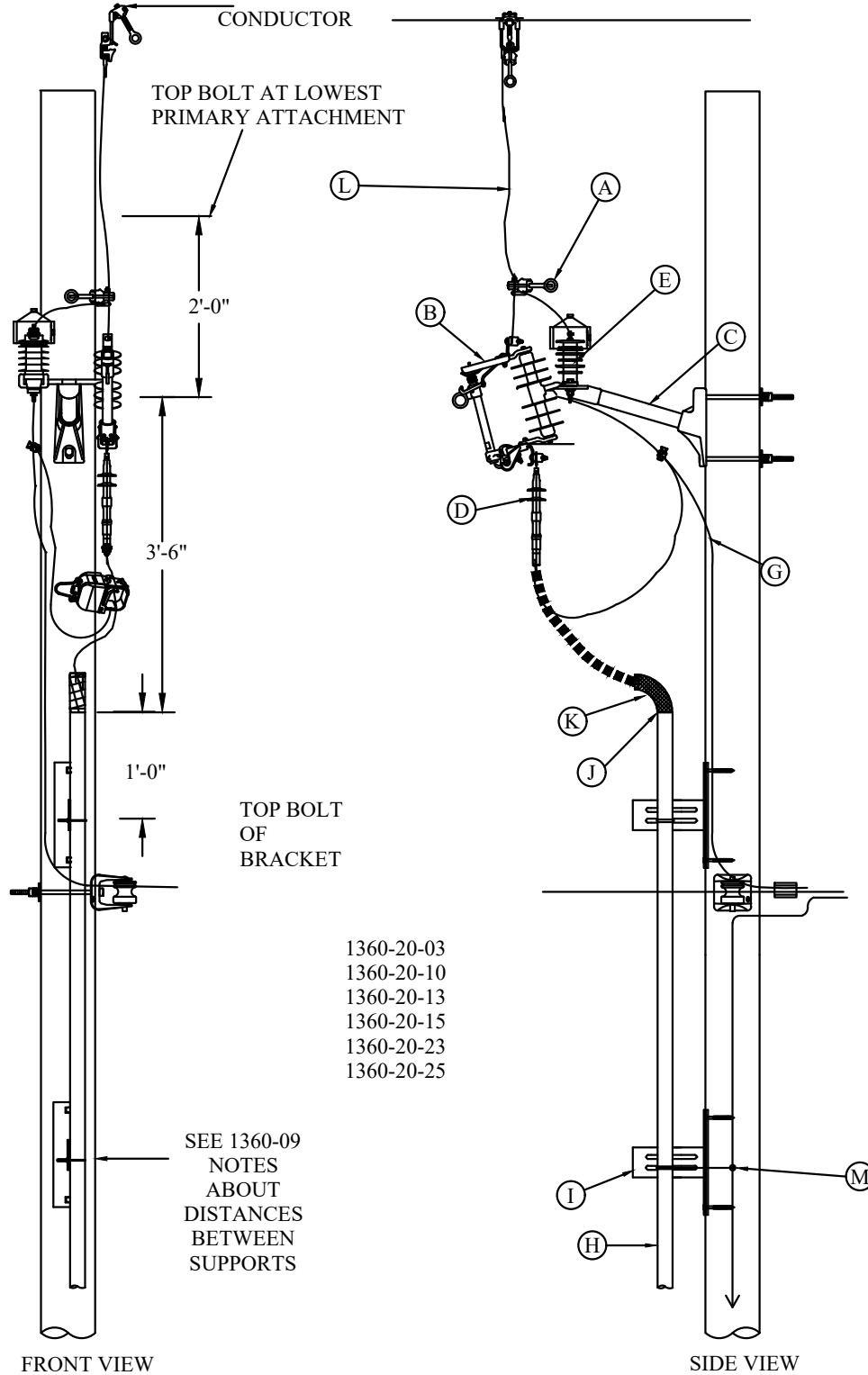


1360-15-31, 1/0 AL TERM, 1/0 NEUTRAL
1360-15-32, 1/0 AL TERM, 4/0 NEUTRAL
1360-15-41, POWER CABLE TERM, 1/0 NEUTRAL
1360-15-42, POWER CABLE TERN, 4/0 NEUTRAL

CU-REF	CU-ID	CU-DESCRIPTION
13601511	GRDRIS1PH1/0AL1/0N	GRD RISER 1PH 1/0AL 1/0 NEUT
13601512	GRDRIS1PH1/0AL4/0N	GRD RISER 1PH 1/0AL 4/0 NEUT
13601521	GRDRIS2PH1/0AL6-1/0N	GRD RISER 2PH 1/0AL 1/0 NEUT
13601522	GRDRIS2PH1/0AL4/0N	GRD RISER 2PH 1/0AL 4/0 NEUT
13601531	GRDRIS3PH1/0AL6-1/0N	GRD RISER 3PH 1/0AL 1/0 NEUT
13601532	GRDRIS3PH1/0AL4/0N	GRD RISER 3PH 1/0AL 4/0 NEUT
13601541	GRDPCRS3PH1/0N	GRD POWER CABLE RISER 3PH 1/0 NEUT
13601542	GRDPCRS3PH4/0N	GRD POWER CABLE RISER 3PH 4/0 NEUT

REV_DATE:

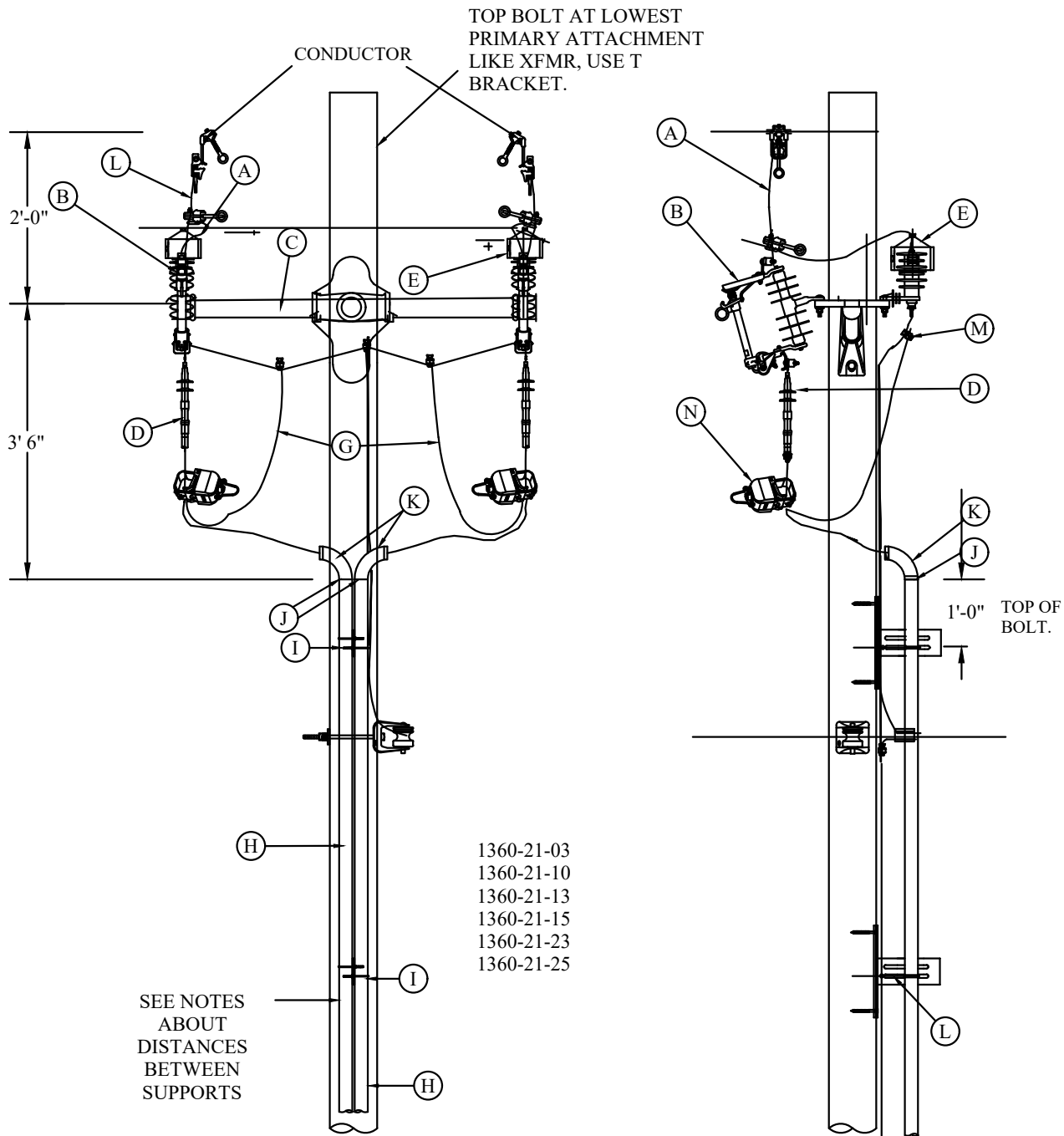
04/01/26



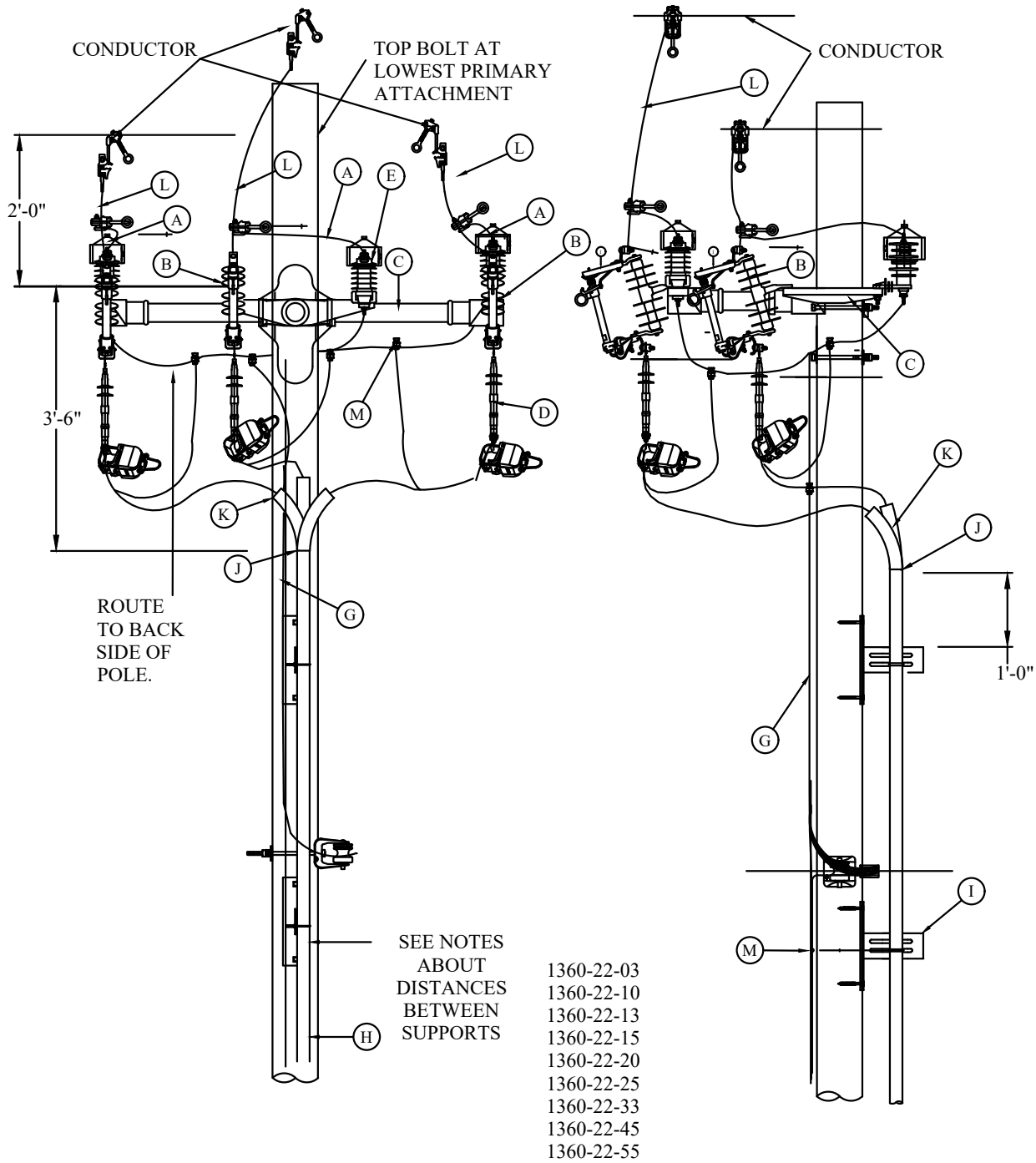
MU-REF	MU-ID	MU-DESCRIPTION
13602003	RISPRI1PH1/0AL1/0P1/0N	RISER PRI 1PH 1/0 AL 1/0 PRI 1/0 NEUT
13602010	RISPRI1PH1/0AL4/0P4/0N	RISER PRI 1PH 1/0 AL 4/0 PRI 4/0 NEUT
13602013	RISPRI1PH1/0AL795P1/0N	RISER PRI 1PH 1/0 AL 795 PRI 1/0 NEUT
13602015	RISPRI1PH1/0AL795P4/0N	RISER PRI 1PH 1/0 AL 795 PRI 4/0 NEUT
13602023	RISPRI1PH1/0AL1/0P1/0N-CC	RISER PRI 1PH 1/0 AL 1/0 PRI 1/0 NEUT - CC
13602025	RISPRI1PH1/0AL795P4/0N-CC	RISER PRI 1PH 1/0 AL 795 PRI 4/0 NEUT - CC

REV_DATE:

04/01/26



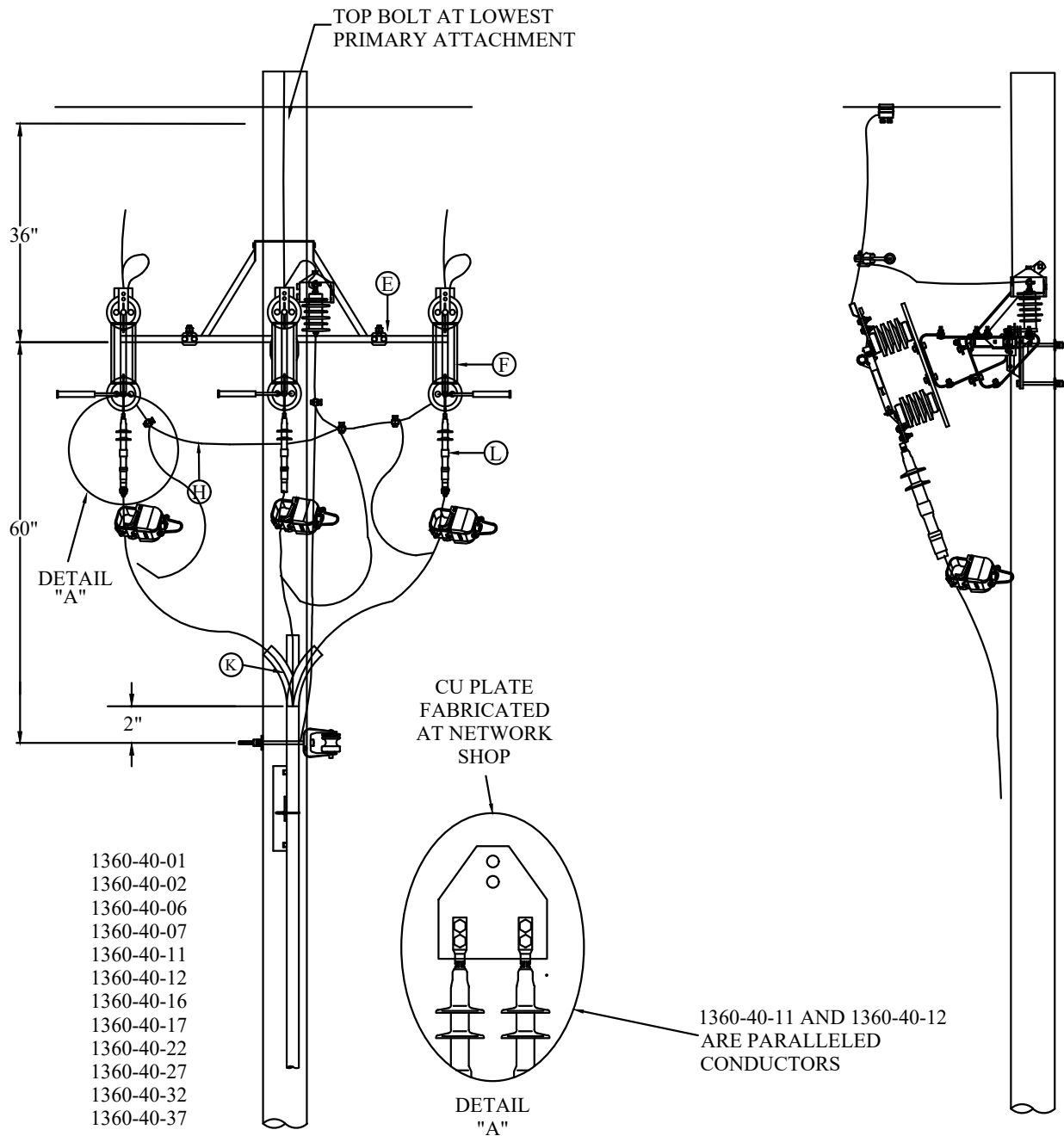
MU-REF	MU-ID	MU-DESCRIPTION
13602103	RISPRI2PH1/0AL1/0P1/0N	RISER PRI 2PH 1/0 AL 1/0 PRI 1/0 NEUT
13602110	RISPRI2PH1/0AL4/0P4/0N	RISER PRI 2PH 1/0 AL 4/0 PRI 4/0 NEUT
13602113	RISPRI2PH1/0AL795P1/0N	RISER PRI 2PH 1/0 AL 795 PRI 1/0 NEUT
13602115	RISPRI2PH1/0AL795P4/0N	RISER PRI 2PH 1/0 AL 795 PRI 4/0 NEUT
13602123	RISPRI2PH1/0AL1/0P1/0N-CC	RISER PRI 2PH 1/0 AL 1/0 PRI 1/0 NEUT - CC
13602125	RISPRI2PH1/0AL795P4/0N-CC	RISER PRI 2PH 1/0 AL 795 PRI 4/0 NEUT - CC



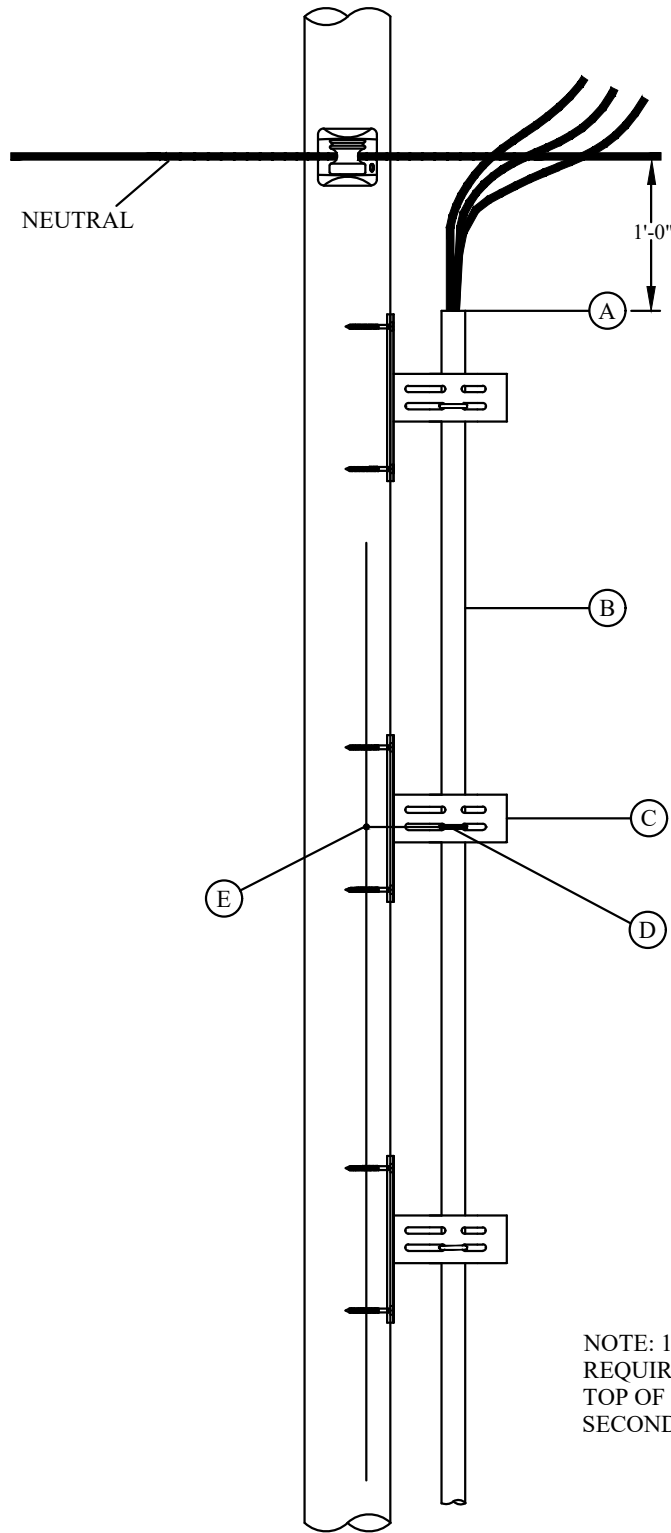
MU-REF	MU-ID	MU-DESCRIPTION
13602203	RISPRI3PH1/0AL1/0P1/0N	RISER PRI 3PH 1/0 AL 1/0 PRI 1/0 NEUT
13602210	RISPRI3PH1/0AL4/0P4/0N	RISER PRI 3PH 1/0 AL 4/0 PRI 4/0 NEUT
13602213	RISPRI3PH1/0AL795P1/0N	RISER PRI 3PH 1/0 AL 795 PRI 1/0 NEUT
13602215	RISPRI3PH1/0AL795P4/0N	RISER PRI 3PH 1/0 AL 795 PRI 4/0 NEUT
13602220	RISPRI3PH250CU4/0P4/0N	RISER PRI 3PH 250CU 4/0 PRI 4/0 NEUT
13602225	RISPRI3PH250CU795P4/0N	RISER PRI 3PH 250CU 795 PRI 4/0 NEUT
13602233	RISPRI3PH1/0AL1/0P1/0N-CC	RISER PRI 3PH 1/0 AL 1/0 PRI 1/0 NEUT - CC
13602245	RISPRI3PH1/0AL795P4/0N-CC	RISER PRI 3PH 1/0 AL 795 PRI 4/0 NEUT - CC
13602255	RISPRI3PH250CU795P4/0N-CC	RISER PRI 3PH 250CU 795 PRI 4/0 NEUT - CC

REV_DATE:

04/01/26



MU-REF	MU-ID	MU-DESCRIPTION
13604001	RISPC3PH250CU795P1/0N	RISER PC 3PH 250 CU 795 PRI 1/0 NEUT
13604002	RISPC3PH250CU795P4/0N	RISER PC 3PH 250 CU 795 PRI 4/0 NEUT
13604006	RISPC3PH500CU795P1/0N	RISER PC 3PH 500 CU 795 PRI 1/0 NEUT
13604007	RISPC3PH500CU795P4/0N	RISER PC 3PH 500 CU 795 PRI 4/0 NEUT
13604011	RISPC3PH2-500CU795P1/0N	RISER PC 3PH 2- 500 CU 795 PRI 1/0 NEUT
13604012	RISPC3PH2-500CU795P4/0N	RISER PC 3PH 2- 500 CU 795 PRI 4/0 NEUT
13604016	RISPC3PH1KCU795P1/0N	RISER PC 3PH 1000 CU 795 PRI 1/0 NEUT
13604017	RISPC3PH1KCU795P4/0N	RISER PC 3PH 1000 CU 795 PRI 4/0 NEUT
13604022	RISPC3PH250CU795P4/0N-CC	RISER PC 3PH 250 CU 795 PRI 4/0 NEUT - CC
13604027	RISPC3PH500CU795P4/0N-CC	RISER PC 3PH 500 CU 795 PRI 4/0 NEUT - CC
13604032	RISPC3PH2500CU795P4/0N-CC	RISER PC 3PH 2- 500 CU 795 PRI 4/0 NEUT - CC
13604037	RISPC3PH1KCU795P4/0N-CC	RISER PC 3PH 1000 CU 795 PRI 4/0 NEUT - CC



NOTE: 12" MINIMUM CLEARANCE
REQUIRED FOR NEUTRAL AND
TOP OF CONDUCTOR FOR
SECONDARY RISER

MU-REF	MU-ID	MU-DESCRIPTION
13606002	RISSEC2IN	RISER SECONDARY 2 IN
13606003	RISSEC3IN	RISER SECONDARY 3 IN
13606004	RISSEC4IN	RISER SECONDARY 4 IN
13606005	RISSEC5IN	RISER SECONDARY 5 IN

COMMUNICATIONS RISER NOTES:

1. A POLE MATERIAL SHALL BE CAPABLE OF WITHSTANDING A HORIZONTAL LOAD OF 740 LBS, AND BE ACCESSIBLE BY A BUCKET TRUCK. THE POLE HEIGHT WILL BE SPECIFIED TO THE CUSTOMER BY AE BASED ON THE LOCATION OF THE INSTALLATION.
2. RISER CONDUIT SHALL BE IN 10 FOOT SECTIONS. THE FIRST 10 FOOT SECTION OF THE RISER CONDUIT SHALL BE 4" GALVANIZED RIGID METAL CONDUIT. EACH 10 FOOT SECTION THERAFTER SHALL BE A 4" PVC SCH 80 CONDUIT, IN 10 FOOT SECTIONS WITH ONE BELL END. THE HEIGHT OF THE 4" PVC RISER WILL BE SPECIFIED TO THE CUSTOMER BY AE BASED ON THE LOCATION OF THE INSTALLATION.
3. A STANDOFF BRACKET ASSEMBLY FOR 4" CONDUIT, SHALL BE INSTALLED FOR EACH 10 FOOT SECTION OF RISER CONDUIT. THE STANDOFF BRACKET ASSEMBLY SHALL INCLUDE THE FOLLOWING PARTS:
 - 3.1. GALVANIZED STANDOFF BRACKET FOR 2 TO 5 INCH CONDUIT, QUANTITY OF 1, APPROVED MFG AND MFG PART NUMBERS: S&H MANUFACTURING PART # APP-2931, MACLEAN POWER SYSTEMS PART # SK-260, AUSTIN METER PART # SO-2, AMERICAN METAL PART # 414-SB
 - 3.2. GALVANIZED U-BOLT, 3/8 INCH FOR 4 INCH PIPE WITH 2-1/2 INCH THREAD GALVANIZED NUT, QUANTITY OF 1 WASHER ROUND HOT DIP GALVANIZED 3/8 INCH, QUANTITY OF 2 APPROVED MFG AND MFG PART NUMBERS: MACLEAN POWER SYSTEMS PART #J1084, AB CHANCE PART #6801, COOPER POWER PART # DF1W1
 - 3.3. HOT DIPPED GALVANIZED LAG BOLT FETTER DRIVE G5CT 1/2 INCH X 4 INCH, QUANTITY OF 2, APPROVED MFG AND MFG PART NUMBERS: MACLEAN POWER SYSTEMS 8754P, AB CHANCE PART # 508745, POWER LINE HARDWARE PART # P8754P
 - 3.4. HOT DIPPED GALVANIZED ROUND WASHER 1/2 INCH, QUANTITY OF 2, APPROVED MFG AND MFG PART NUMBERS: AB CHANCE PART # 6803, COOPER POWER PART # DF1W2, MACLEAN POWER SYSTEM PART # J1086.
4. A POLE GROUND SHALL BE INSTALLED AS NEEDED TO ACHIEVE A GROUND THAT DOES NOT EXCEED 25 OHMS. THE GROUND SHALL BE INSTALLED PER APPLICABLE GROUNDING DETAIL OF SECTION 1119 OF AUSTIN ENERGY'S DISTRIBUTION CONSTRUCTION STANDARDS MANUAL.
5. A #6 BARE COPPER WIRE SHALL BE USED TO GROUND THE STANDOFF BRACKET.
6. A SPLIT BOLT CONNECTOR SHALL BE USED TO BOND THE #6 BARE COPPER WIRE TO THE POLE GROUND.
7. A 90 DEGREE BEND, 4" PVC SCH40 CONDUIT WITH A 36" MINIMUM RADIUS SHALL BE INSTALLED AT THE BASE OF THE RISER CONDUIT. THE 90 DEGREE BEND SHALL HAVE A MINIMUM OF 2" CONCRETE ENCASEMENT FROM GROUND LEVEL TO THE COUPLING. CONCRETE SHALL BE 5 SACK, CLASS A, 3/4 INCH TO 1 INCH AGGREGATE OR CLASS B WITH 3/8 " AGGREGATE, 2000 PSI CONCRETE.
8. COMMUNICATION RISER IS NOT USED AS OPTION FOR PRIMARY OR SECONDARY RISER. THIS IS NOT TO BE UTILIZED FOR CABLE PULLING PURPOSES. REFER TO SECTION 1410 DUCTBANK SECTION FOR ADDITIONAL INFORMATION ON OTHER RISERS.

